

South Australia's Environment Protection Authority

South-eastern Edwardstown *Community Working Group*



Tuesday 24 November 2015



1. Welcome and introductions

Welcome and introductions

- The EPA Project Team
 - Technical specialists
 - Stakeholder engagement

Agenda

1. Welcome and introductions
2. Round the table introductions
3. Terms of Reference
4. Background
5. EPA assessment works to date
6. Current assessment program
7. Results and next steps
8. Question and answer
9. Community engagement and communication
10. Next meeting and actions

2. Round table introductions

Round table introductions



- Your name
- Which street you live on
- Why you are attending tonight?
- What would you most like to understand?

3. Terms of reference

Terms of Reference

- Purpose of the group
- Membership and privacy
- Meeting specifics
- Conflict resolution
- Communication protocols
- Media protocols
- Meeting notes and documents

4. Background

Suburb history



1949

Suburb history



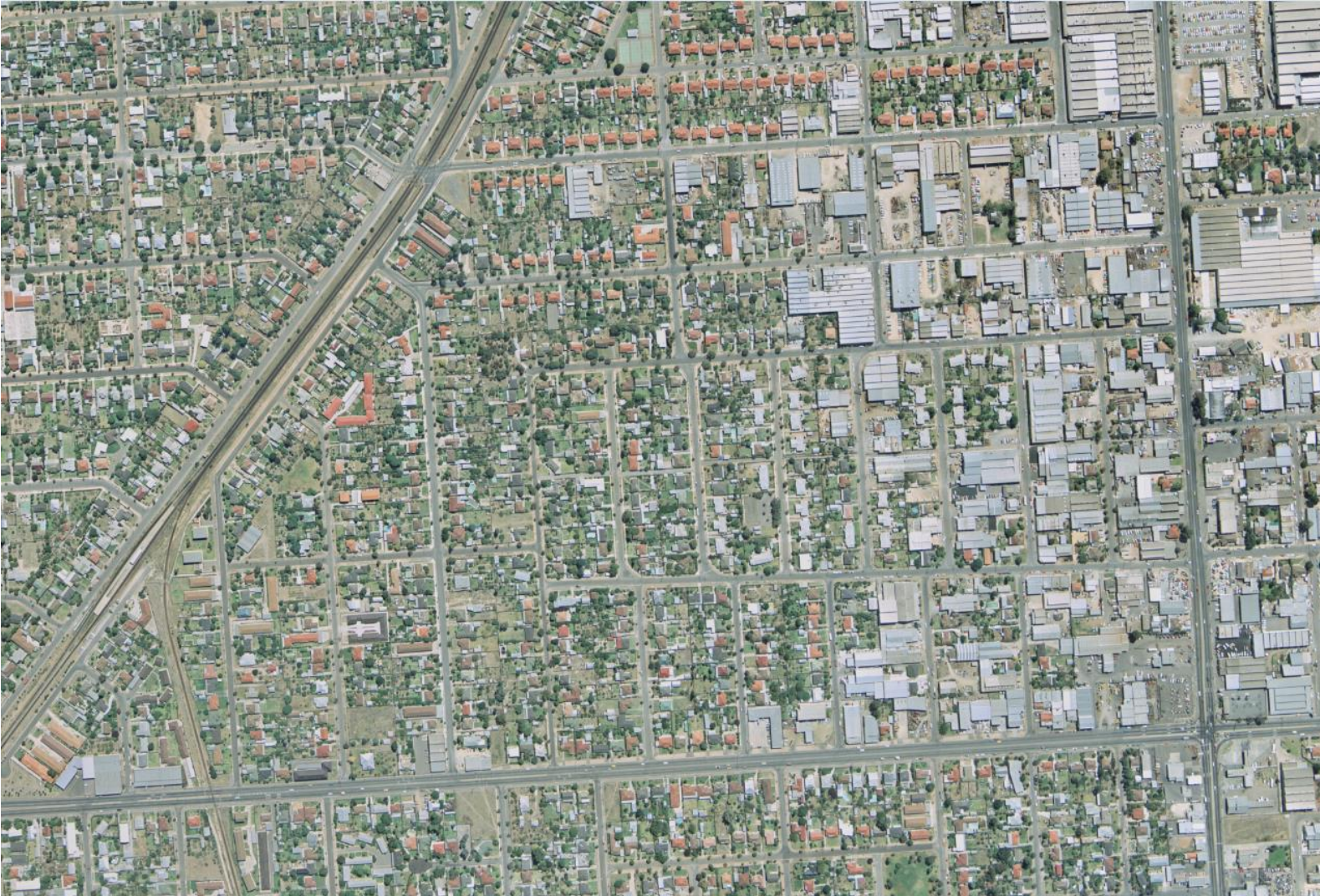
1959

Suburb history



1969

Suburb history



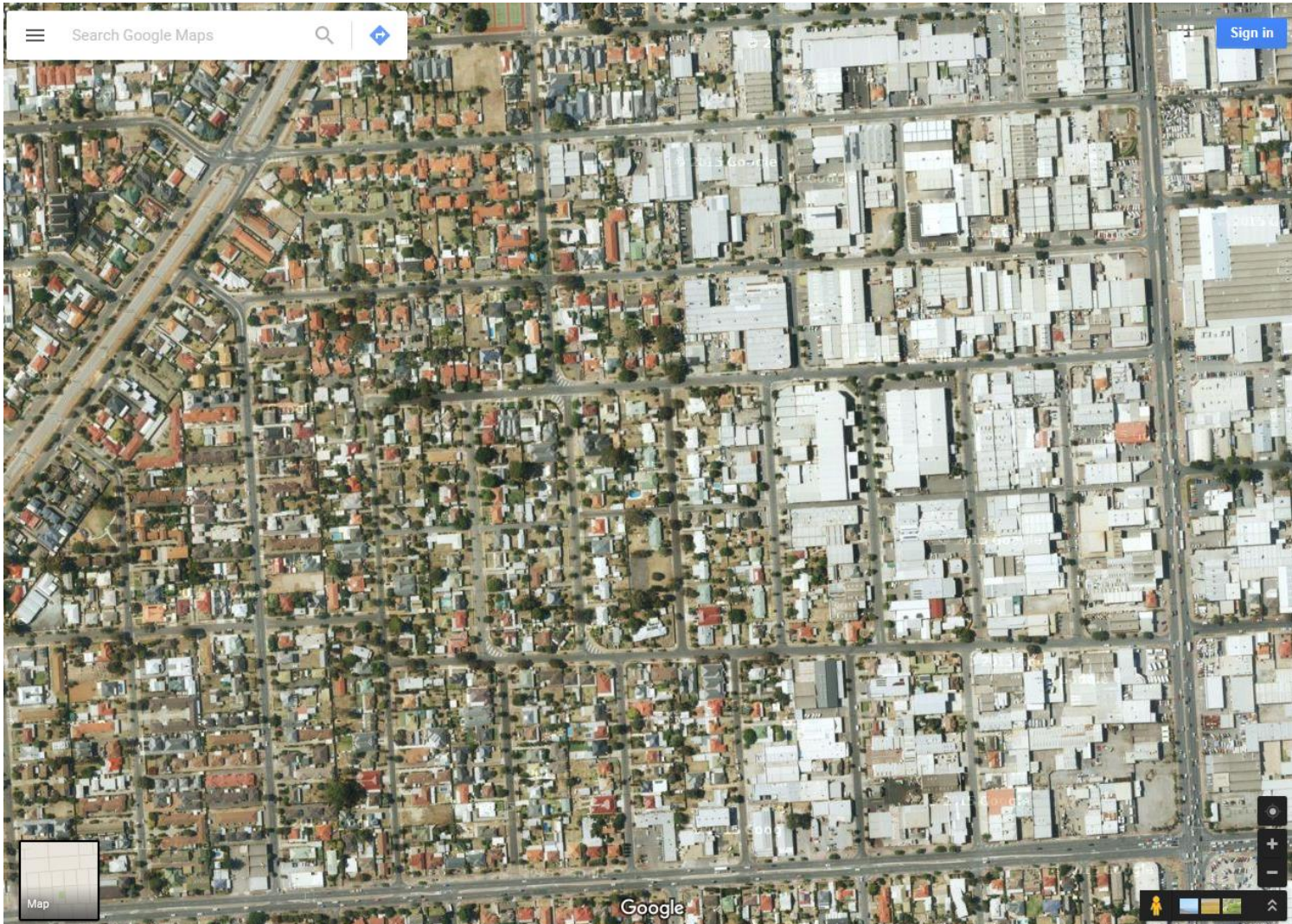
1979

Suburb history



1989

Suburb history

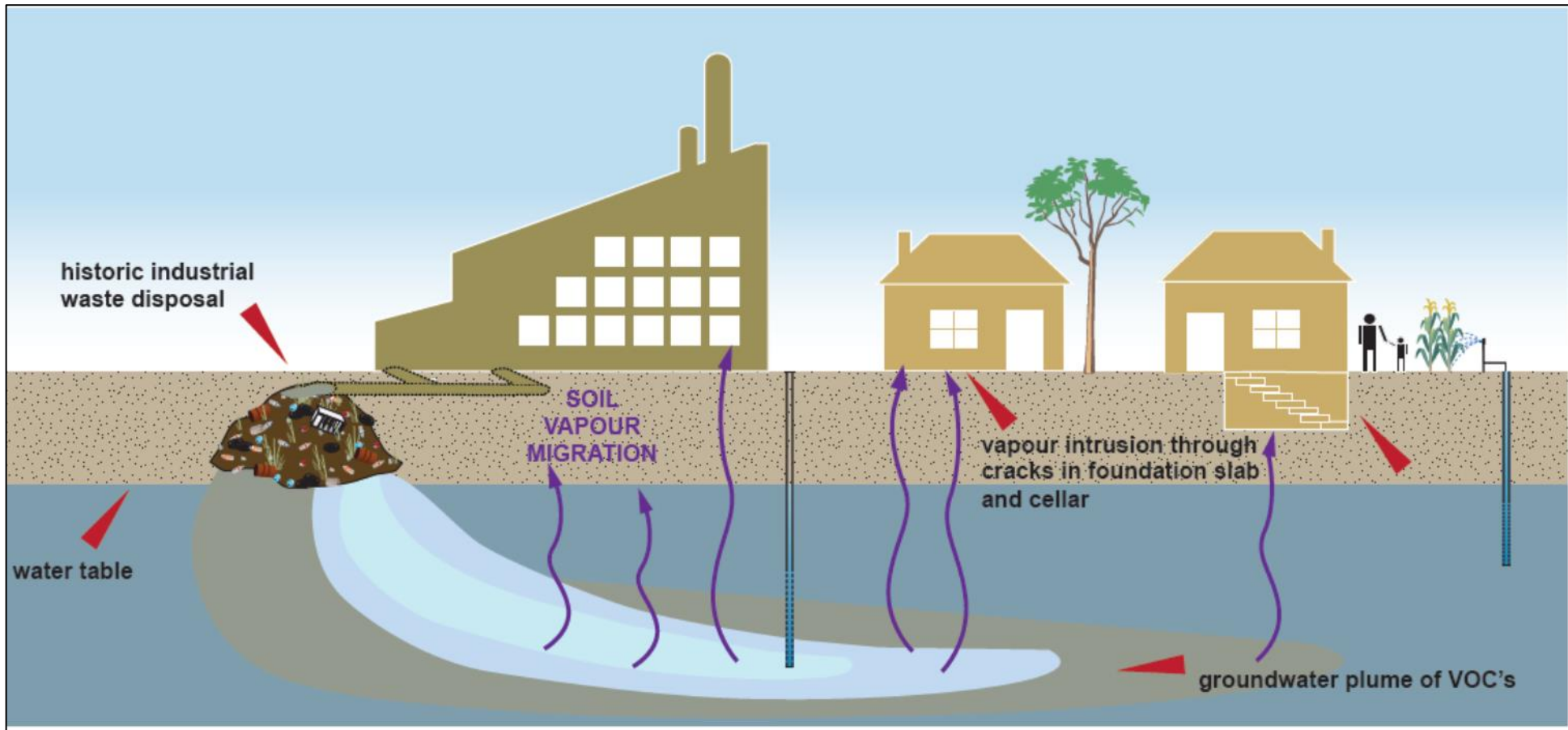


2014

What is TCE?

- TCE was used widely across Australia and internationally
- Common uses:
 - Metal cleaning and degreaser in industry
 - Manufacture of adhesives, lacquers, dyes perfumes and soaps
 - Previously used to produce decaffeinated coffee
 - Dry cleaning
 - Anaesthetic in the past
- Used by a number of businesses in Edwardstown, primarily for electroplating and vehicle manufacturing
- Recommended disposal method was to pour on soil to allow evaporation away from water courses

How can TCE contamination occur

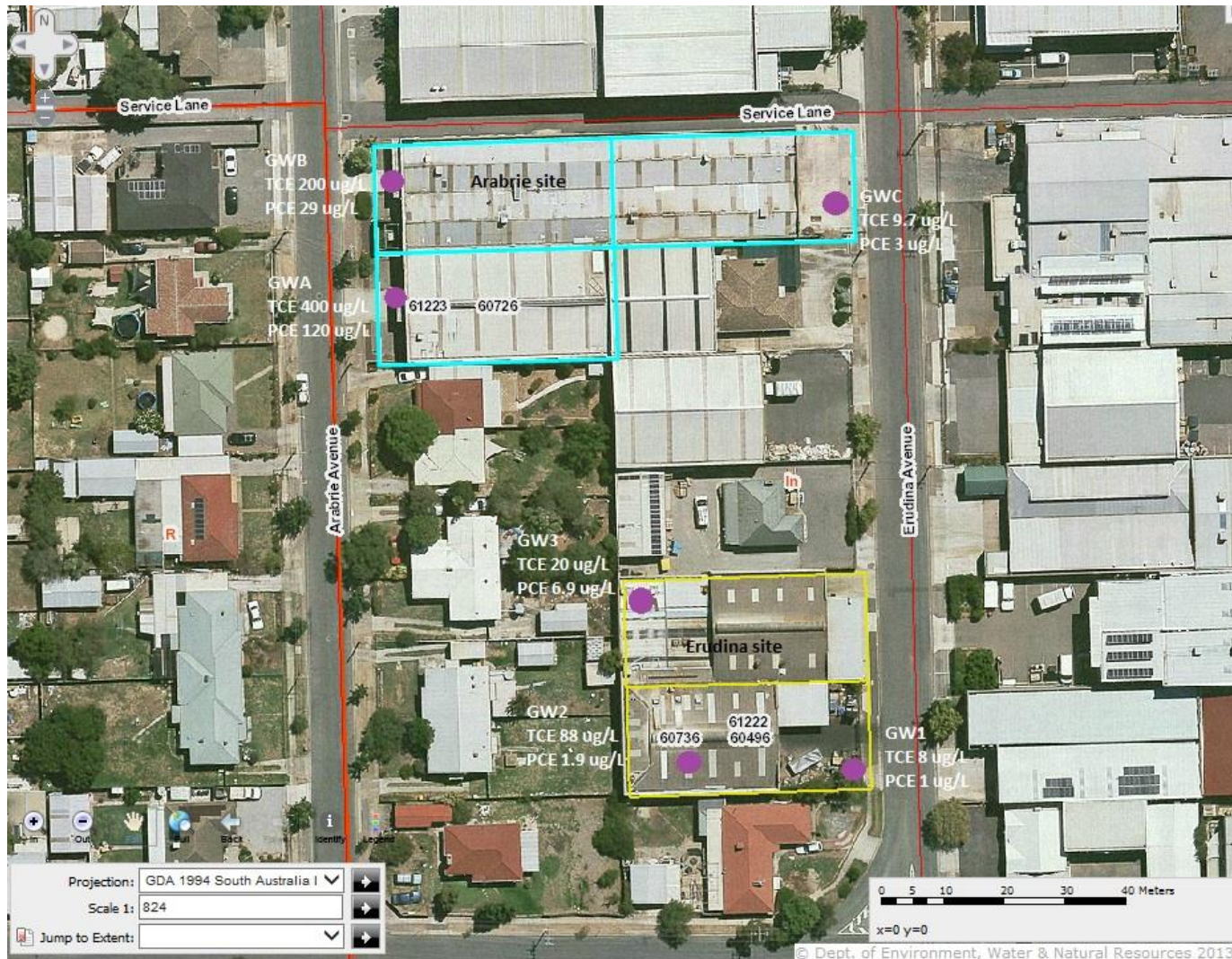


5. EPA assessment works to date

EPA assessment works to date

- **March 2011** – EPA authorised officers visited an industrial property on Erudina Avenue, Edwardstown. Groundwater monitoring of an accessible on-site wells was carried out by an EPA Hydrogeologist.
- **Mid 2011** – EPA requested reports of previous groundwater testing from owner of Erudina property and another property on Arabrie Avenue, Edwardstown.
- **Late 2011** – EPA required the site contamination consultant, who undertook the testing, to provide all relevant reports to the EPA. Reports indicate groundwater at the property has been impacted by industrial activities.
- **2012-2014** – Regular communications from the EPA requesting the site owner undertake an environmental assessment to determine the nature and extent of groundwater contamination off-site.

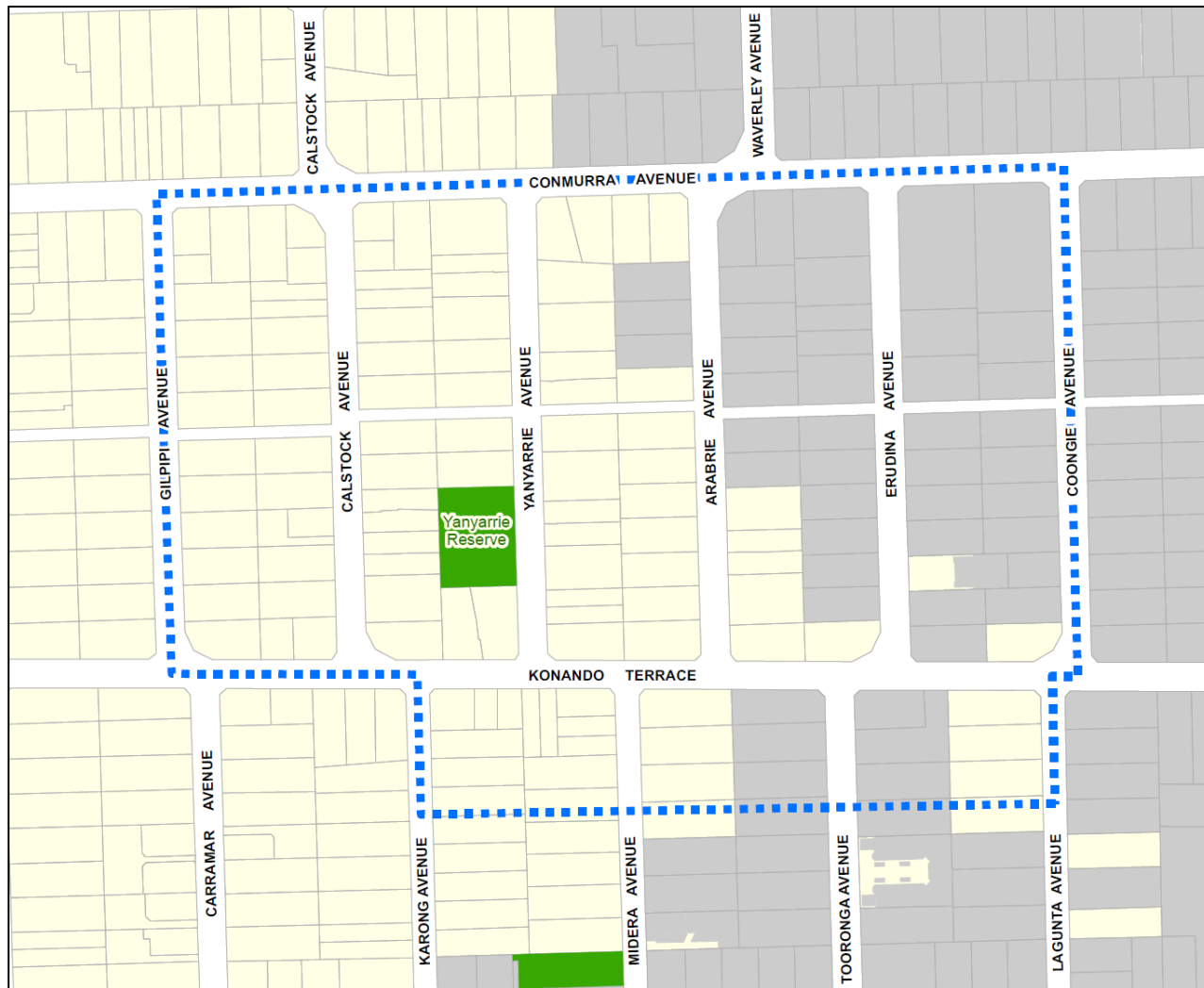
EPA assessment works to date



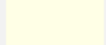
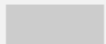

EPA assessment works to date

- **Late 2014** – EPA commits to undertake assessment work at the properties and in the vicinity of the properties to determine the nature and extent of site contamination.
- **April 2015** – EPA undertakes groundwater and soil vapour sampling at both industrial properties and at a number of locations on road verges within the preliminary assessment area.
- **June/July 2015** – EPA receives results and communicated these results to local residents and other key stakeholders. Full nature and extent of contamination is not understood.
- **November 2015** – EPA commences further groundwater and soil vapour sampling at both industrial properties and at a number of locations on the road verges across the broadened assessment area.

EPA assessment works to date



South-Eastern Edwardstown Assessment Area

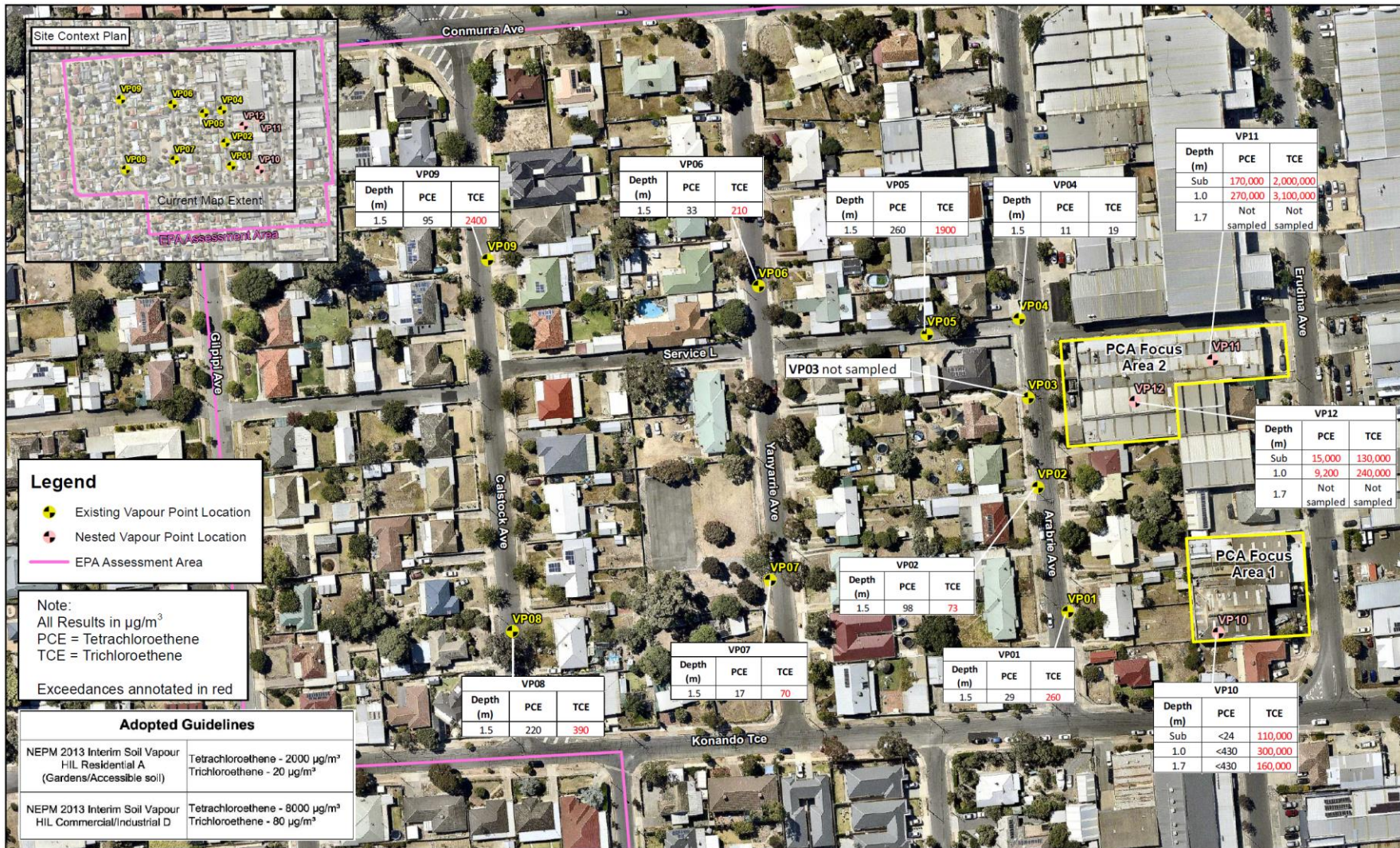
-  Residential
-  Commercial, Industry or Vacant
-  Parks and Reserves
-  EPA Assessment Area

April – August 2015

EPA assessment works to date

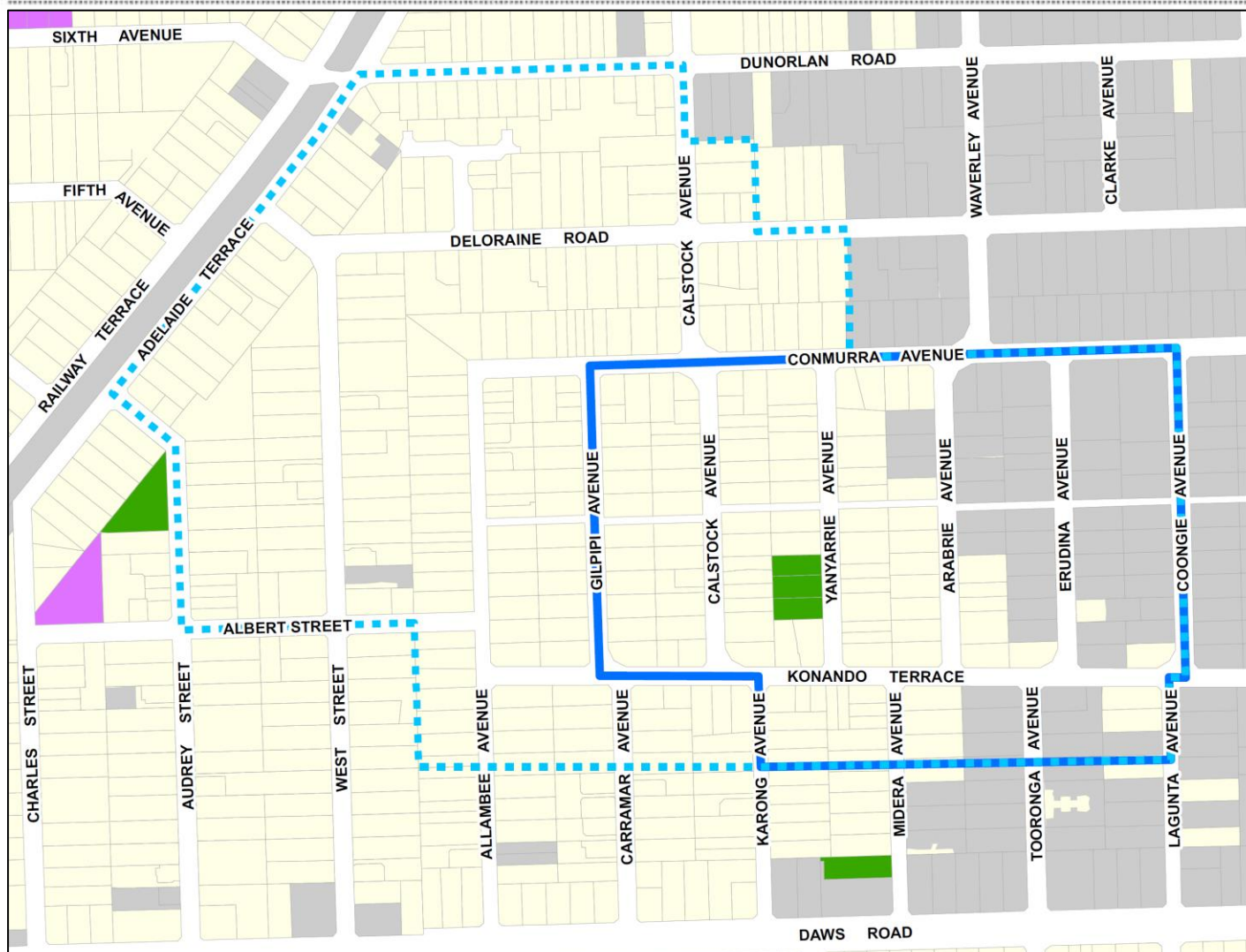


EPA assessment works to date


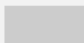






6. Current assessment program

EPA assessment area



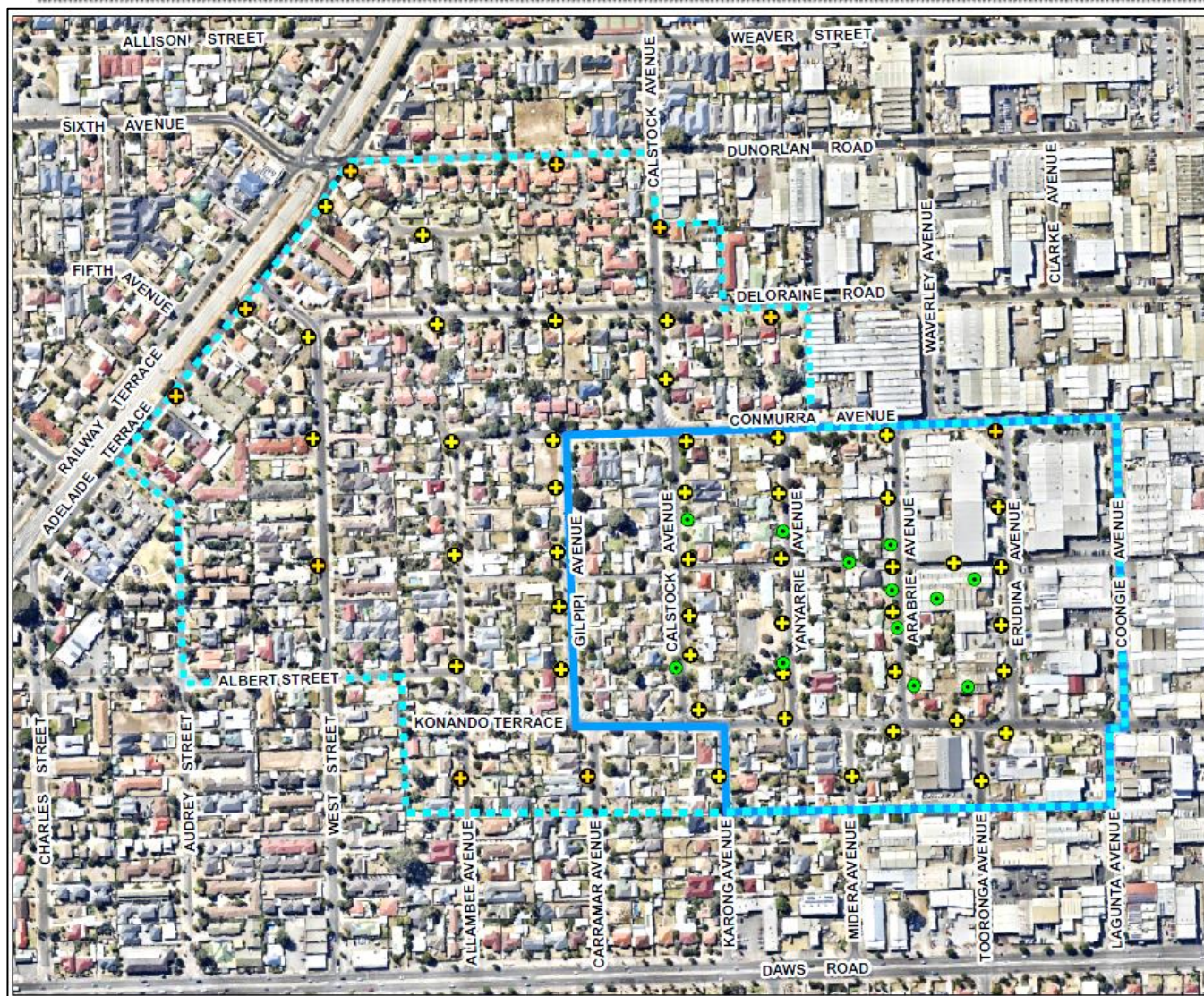
South-Eastern Edwardstown Assessment Area

-  Residential
-  Commercial, Industry or Vacant
-  Parks and Reserves
-  Public Institution
-  April 2015 Assessment Area
-  November 2015 Assessment Area

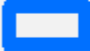




EPA assessment process



EPA assessment area



South-Eastern Edwardstown Assessment Area

-  Current EPA Assessment Area
-  Broadened EPA Assessment Area
-  Soil Vapour Bore
-  Proposed Permanent Soil Vapour Bore
-  Proposed Passive Soil Vapour Bore

EPA assessment works

- Scope of work program – public land:
 - 44 passive (temporary) soil vapour bores at a depth of 1 metre
 - 10 permanent soil vapour bores at a depth of 1.7 metres

- Scope of work program – residential and industrial land:
 - 9 nested sets of soil vapour bores at depths of 1 and 1.7 metres
 - Soil vapour sampling in the crawl space (beneath the floor)
 - Indoor air sampling (industrial sites only)
 - Soil vapour sampling below the concrete slab (industrial sites only)

EPA assessment works



7. Results and next steps

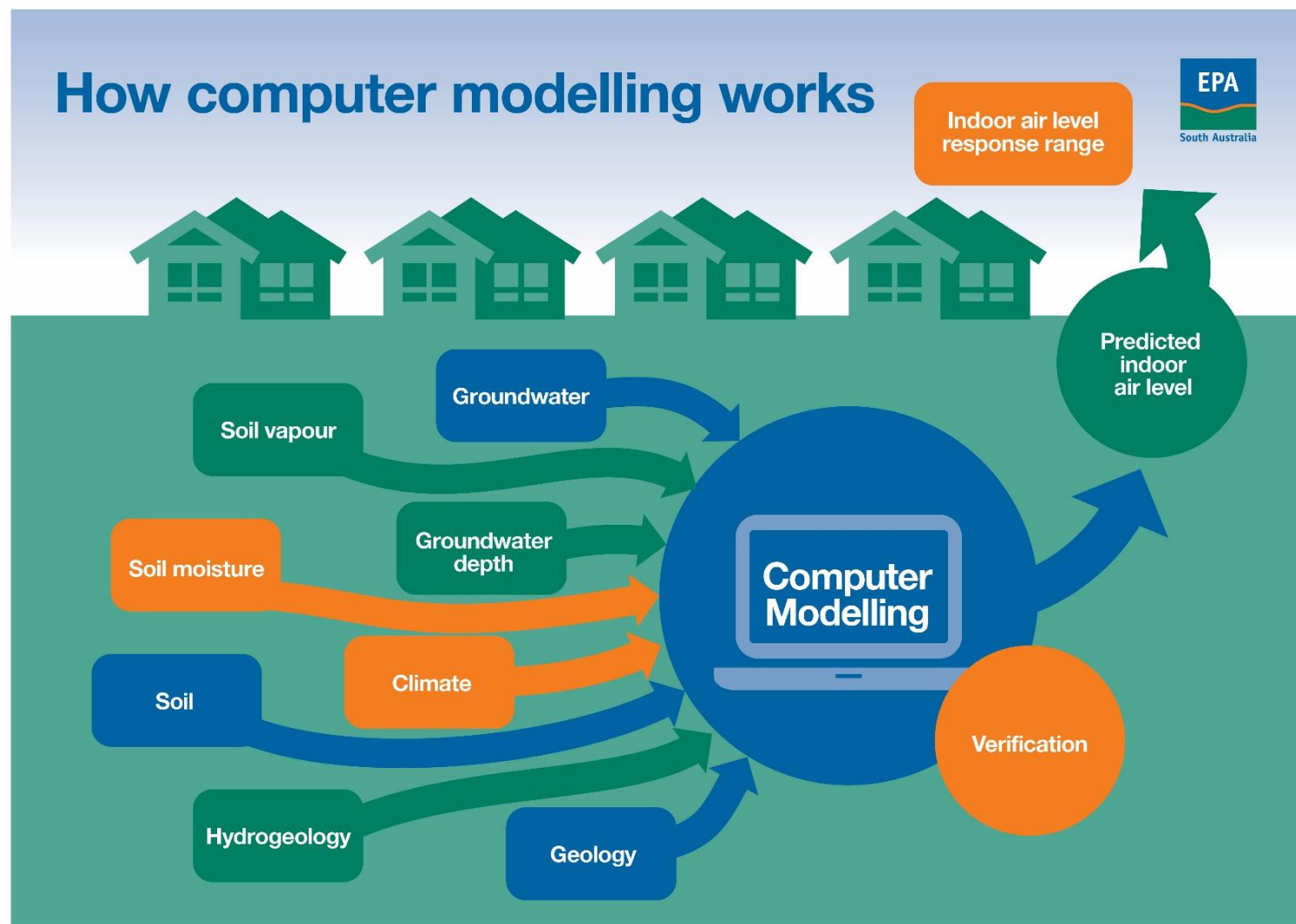
EPA assessment results

- Involves two stages of assessment:
 - Stage 1 – raw data produced through the laboratory analysis
 - Stage 2 – full report, vapour intrusion risk assessment and human health risk assessment

- Computer modelling will be used to help assess and understand the risk of vapour intrusion
 - Uses multiple lines of evidence
 - Site specific data

Computer modelling

How computer modelling works



Communicating the results and next steps

- Residents and key stakeholders will be advised of the Stage 2 results as they become available (following EPA review)
 - Letter outlining results relevant to the property
 - Fact sheet providing a summary of the assessment results
- All reports will be available on the EPA website
- Further assessment works likely to follow these results
- Groundwater Prohibition Area likely to be declared once the full nature and extent of contamination is understood

8. Question and answer

9. Community engagement

Communications and engagement to date

- April – May 2015
 - Briefings provided to City of Marion and Housing SA
 - Letter and fact sheet distributed to residents
 - Personal visits with residents adjacent to the industrial properties
- July 2015
 - Results communicated to local residents and stakeholders
 - Personal visits with residents adjacent to the industrial properties
- November 2015
 - Briefings provided to City of Marion and Housing SA
 - Letter and fact sheet distributed to residents in the broader assessment area
 - Community Working Group meeting held

Planned engagement

- Community Working Group – ongoing engagement for the area
- Personal visits where EPA would like to undertake residential testing
- Ongoing communication with City of Marion and Housing SA
- Communications when assessment results become available including:
 - Personal visits
 - Letters to the assessment area and broader area
 - Fact sheet summarising results
- Community information line staffed 24/7
 - Hotline: 1800 729 175
 - Email: EPASiteContam@epa.sa.gov.au

10. Next meeting and actions