

South Australia's Environment Protection Authority

Beverley Community Working Group

Tuesday 24 October 2017



Agenda



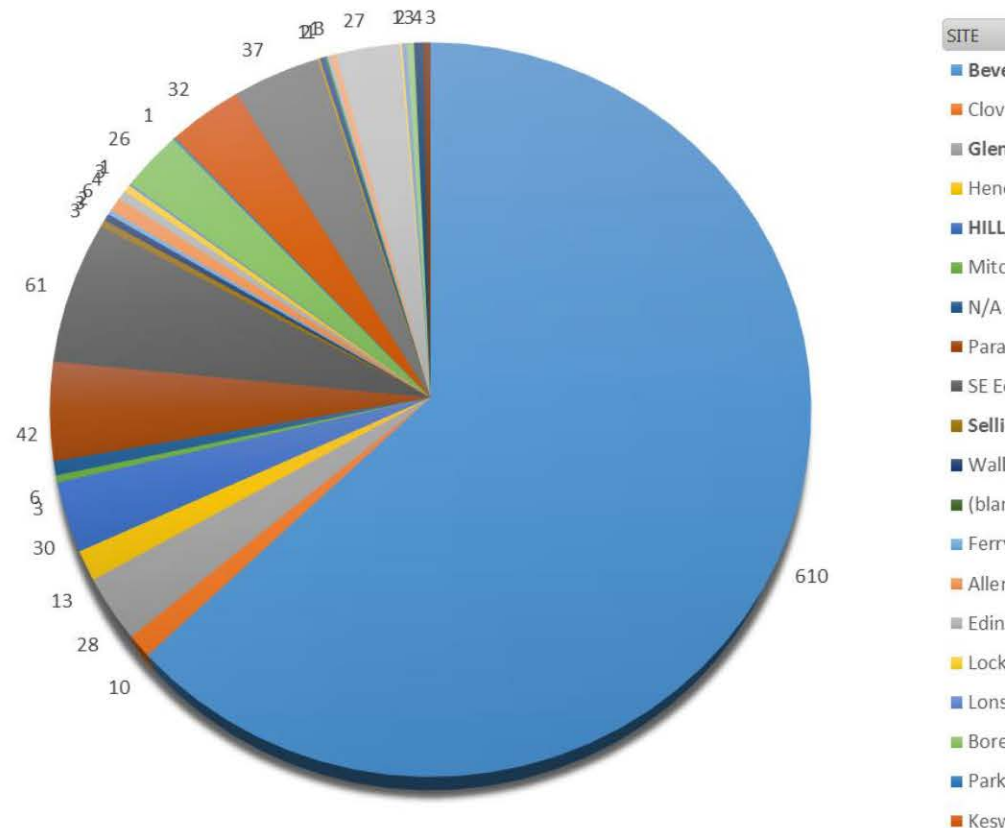
- Welcome
- Community engagement update
- Thebarton assessment area update
- Mitigation overview
- Beverley Stage 4A & 4B update

2015-16 engagement

- This time last year, most of our interactions were with **Beverley residents (610 out of a total of 969, excluding enquiries that came in through the call centre)**

Community Engagement team

969 personal interactions with stakeholders since 22/2/20
(excluding phone enquiries and targeted campaigns)

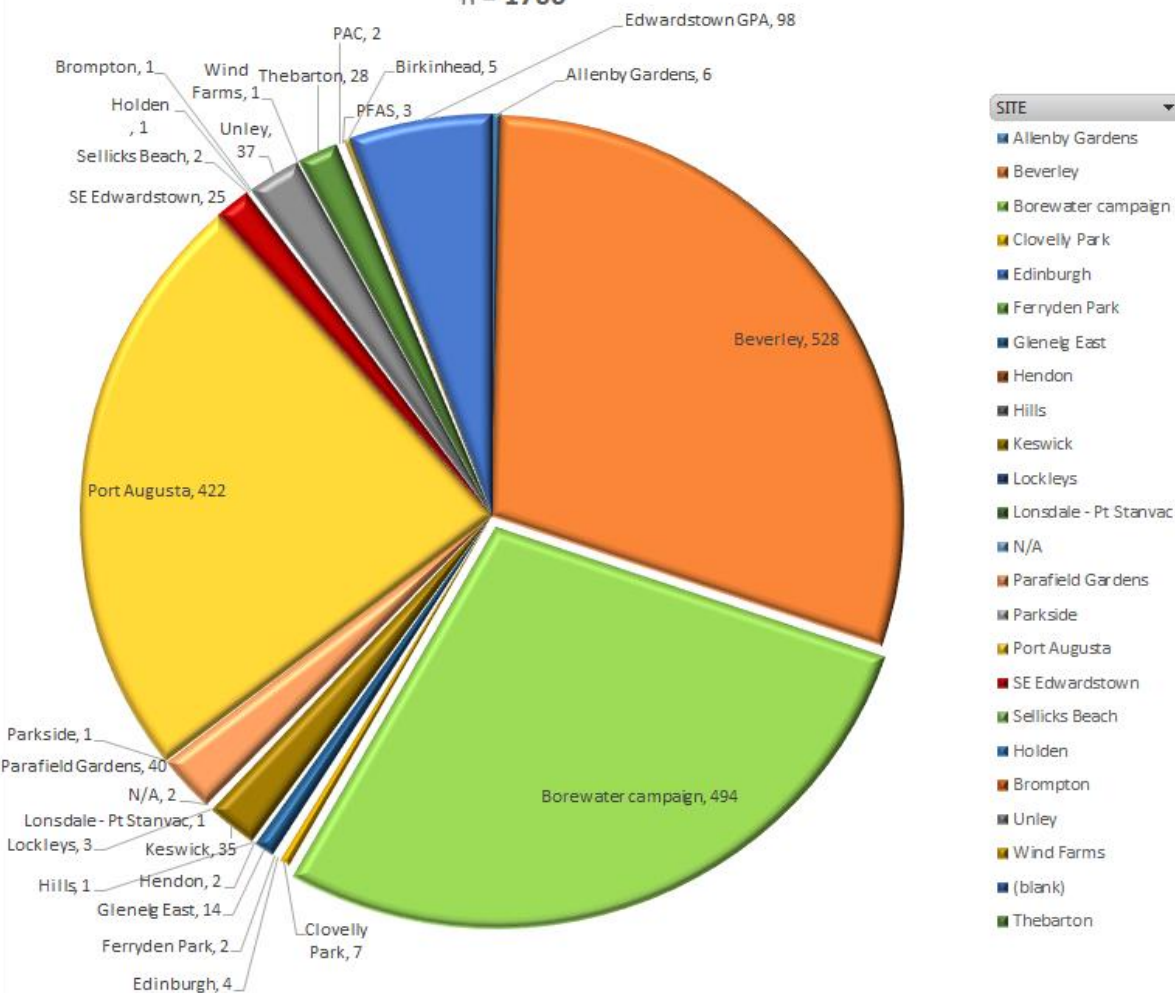


2016-17 engagement

Total stakeholder interactions by site / project (excluding 326 call centre enquiries and 501 online www.engage.epa.sa.gov.au)

1 July 2016 - 30 June 2017

n = 1766



- Borewater (494)
- Flinders Power Port Augusta (422)
- Edwardstown groundwater prohibition (98 personal plus 501 online*)
- 1766 interactions from 1 July 2016 – 30 June 2017

* online engagement tool using EngagementHQ figure excludes regular web hits to the EPA assessment areas site

2016-17 engagement

- Implemented **19 community engagement plans** for 9 different sites
- Held **9 community information sessions** and **8 community working group** meetings
- Published **18 fact sheets** for the EPA (6 of which were in regards to site contamination)
- **2593 total interactions** with stakeholders across all mediums

Thebarton orphan site

28 INDUSTRIAL PROGRESS & DEVELOPMENT (Ipad), April, 1963

A.S.M. PRODUCES ANOTHER SPECIALISED MATERIALS HANDLING UNIT

ALUMINIUM FREIGHT CONTAINERS



This strong but lightweight, dust-proof container has been produced for the Commonwealth Department of Supply for the transport of goods to remote, dusty areas of the State. It has a capacity of 3 tons, but weighs only 7 cwt. Provision is made for handling by either fork-lift or by crane. Crane lifting rods are of 2" Weldex. Wooden bearers on outside of base allow for fork-lifting. Wall skin is made of 12 gauge aluminium alloy. Bottom is reinforced with double channel 10 gauge aluminium alloy. The containers are rain-proof and rust-proof. Ideal for small, loosely packaged freight.

WINE TRANSPORT VESSELS FOR RAIL OR ROAD

1,000 gallon capacity, or larger on request, in aluminium, stainless steel, and mild steel plastic lined. Transport vessels also manufactured for the Dairy, Brewery, and Soft Drink Industries.



Established 40 years ago with 25 years' experience in designing and manufacturing storage, process, and transport equipment for all types of industries including the Winemaking, Brewing, Chemical, and Dairy Industries, has given A.S.M. the know-how to produce, right from the first ideas to the finished equipment, in mild steel, aluminium, stainless steel, or plastic lined.

For specialised Design and Construction for all materials handling and transport containers and tankers,

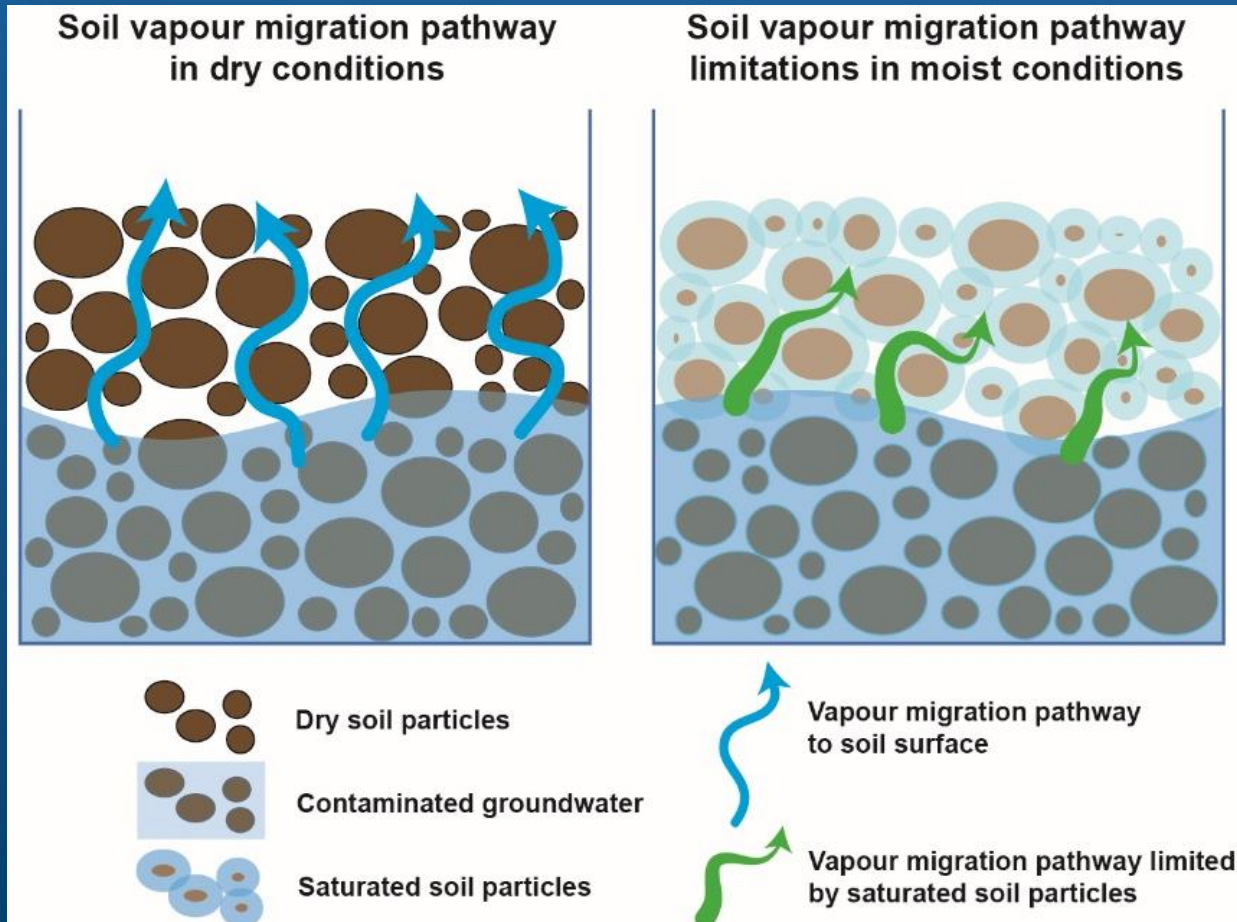
ASK
AS.M.

Fabrication Division
AUSTRAL SHEET METAL WORKS LTD.
21-25 George St., Thebarton, S.A.
Phone: 57-9175
P.O. Box 10551, G.P.O., Adelaide



- Letterbox distribution to **354** residents
- Mailout to **122** absent landowners
- Fact sheet
- Invite to community info sessions
- **10** people attended
- Soil vapour results higher than Beverley at 1mbgl

Thebarton indoor air



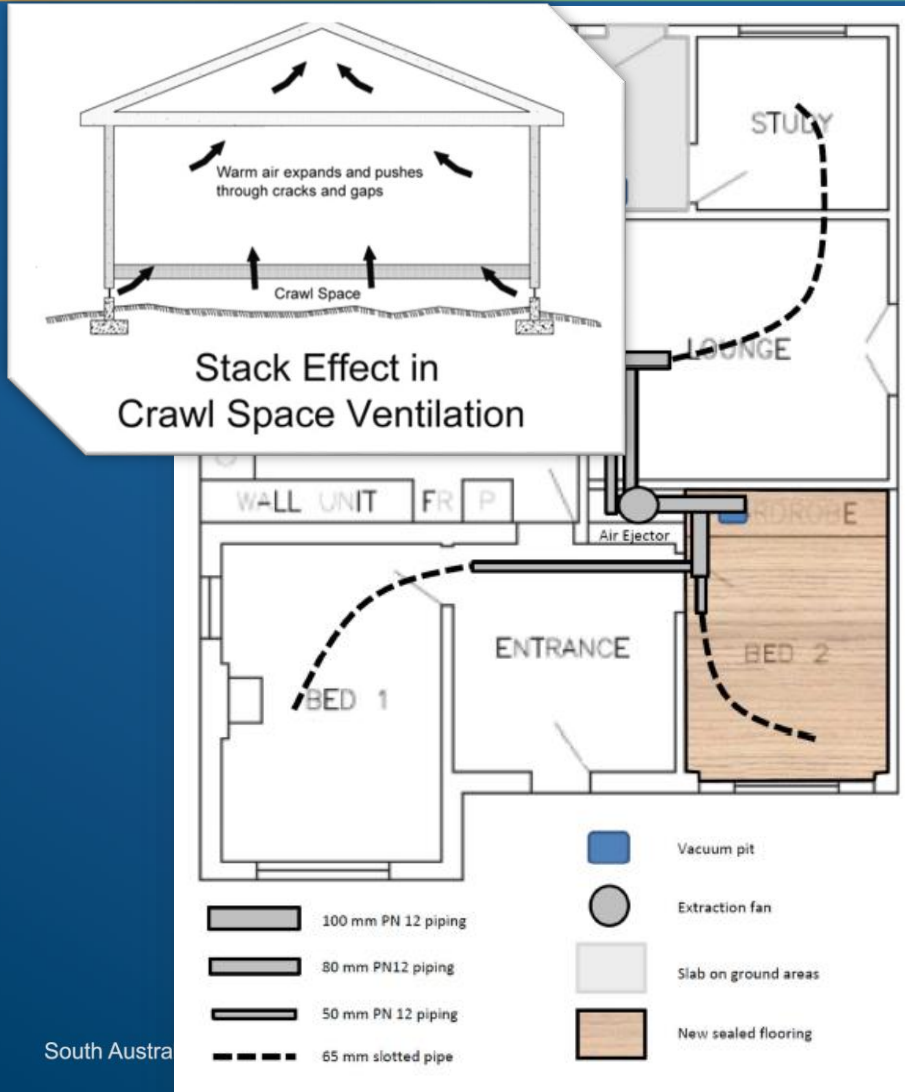
The EPA contacted the owners of 17 properties to seek permission for indoor air sampling

Thebarton high SV results



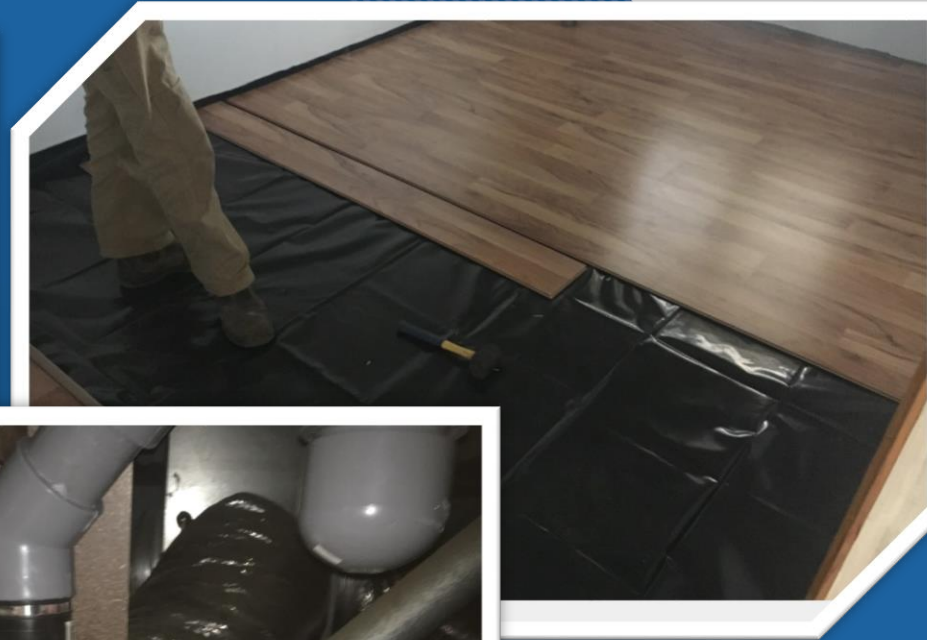
[Thebarton Channel 7 Media](#)

Mitigation required



- Three measured no TCE in indoor air
- Five 'Intervention'
- Majority of the remainder now undergoing testing
- Mitigation system design next steps.
- Thebarton continuing as Beverley, under a 'pilot trial'

Mitigation systems



Indoor air level response range (TCE)



No Action

Indoor Air Level:
Nothing detected

Safe



Validation

Indoor Air Level:
Above detection - less than 2 ($\mu\text{g}/\text{m}^3$)

Safe



Investigation

Indoor Air Level:
2 - less than 20 ($\mu\text{g}/\text{m}^3$)

No immediate health concerns
Further assessment may be necessary



Intervention

Indoor Air Level:
20 - less than 200 ($\mu\text{g}/\text{m}^3$)

There may be a health risk
Immediately look at next steps and further assessment



Accelerated Intervention

Indoor Air Level:
200 and above ($\mu\text{g}/\text{m}^3$)

There is a health risk
Immediate action (mitigation or possible relocation)

Beverley Stage 4A update

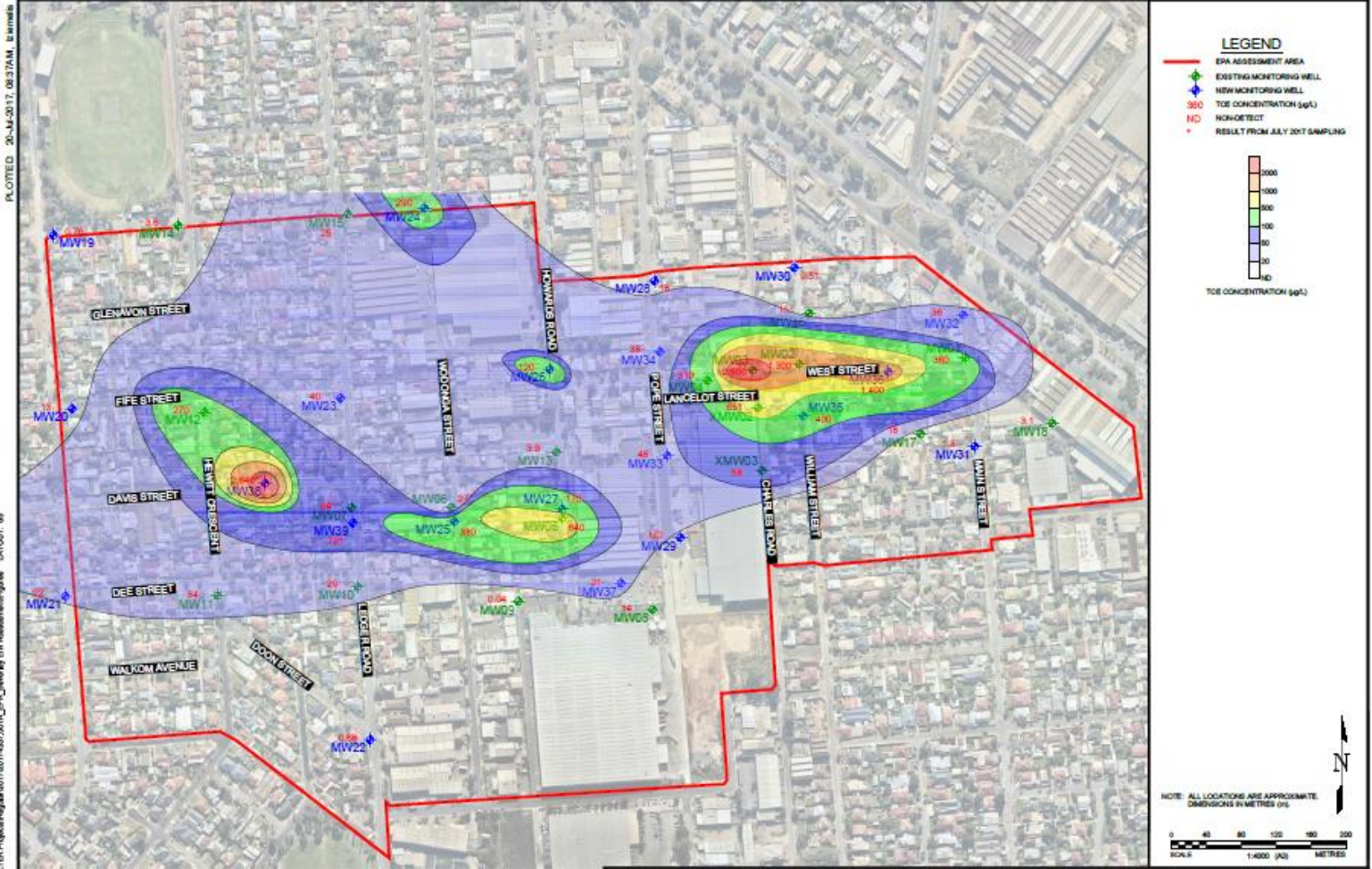
- No additional residential properties have been predicted to be in the Intervention (20 – less than 200 $\mu\text{g}/\text{m}^3$) or 'Accelerated Intervention (200 and above $\mu\text{g}/\text{m}^3$) range of the Indoor air level response range (TCE).
- 16 additional residential properties have been predicted in the Investigation (2 – less than 20 $\mu\text{g}/\text{m}^3$) range.
- 34 additional residential properties have been predicted to be in the Validation (above detection – less than 2 $\mu\text{g}/\text{m}^3$) range.

Beverley Stage 4A update

- All other properties identified in the 'Investigation' (2 – less than 20 ($\mu\text{g}/\text{m}^3$)) and / or 'Intervention' (20 – less than 200 ($\mu\text{g}/\text{m}^3$)) range have been previously identified and where permission was granted have had site specific testing and / or mitigation work undertaken.
- The EPA will offer testing to the 16 properties predicted to be in the 'Investigation' (2 – less than 20 ($\mu\text{g}/\text{m}^3$)) range in the next month.
- If granted permission, testing is expected to be completed before the end of the year.

Beverley Stage 4A update

PLOTTED: 26-Jul-2017, 08:37AM, 8 items



The information included on this public representation has been compiled from a variety of sources and is subject to change without notice. Kleinfelder makes no representation or warranty as to the accuracy or completeness of the information. This document is not intended to be used as a final survey, planning or design or otherwise as a construction design document. The user is bound by the information contained on this public representation. It is the user's sole responsibility to determine the accuracy.

KLEINFELDER
Bright People. Right Solutions.
www.kleinfelder.com

PROJECT:	20174337.001A
DATE DRAWN:	31.05.17
DRAWN BY:	LZ
CHECKED BY:	SB
FILE NAME:	20174337.001A.dwg

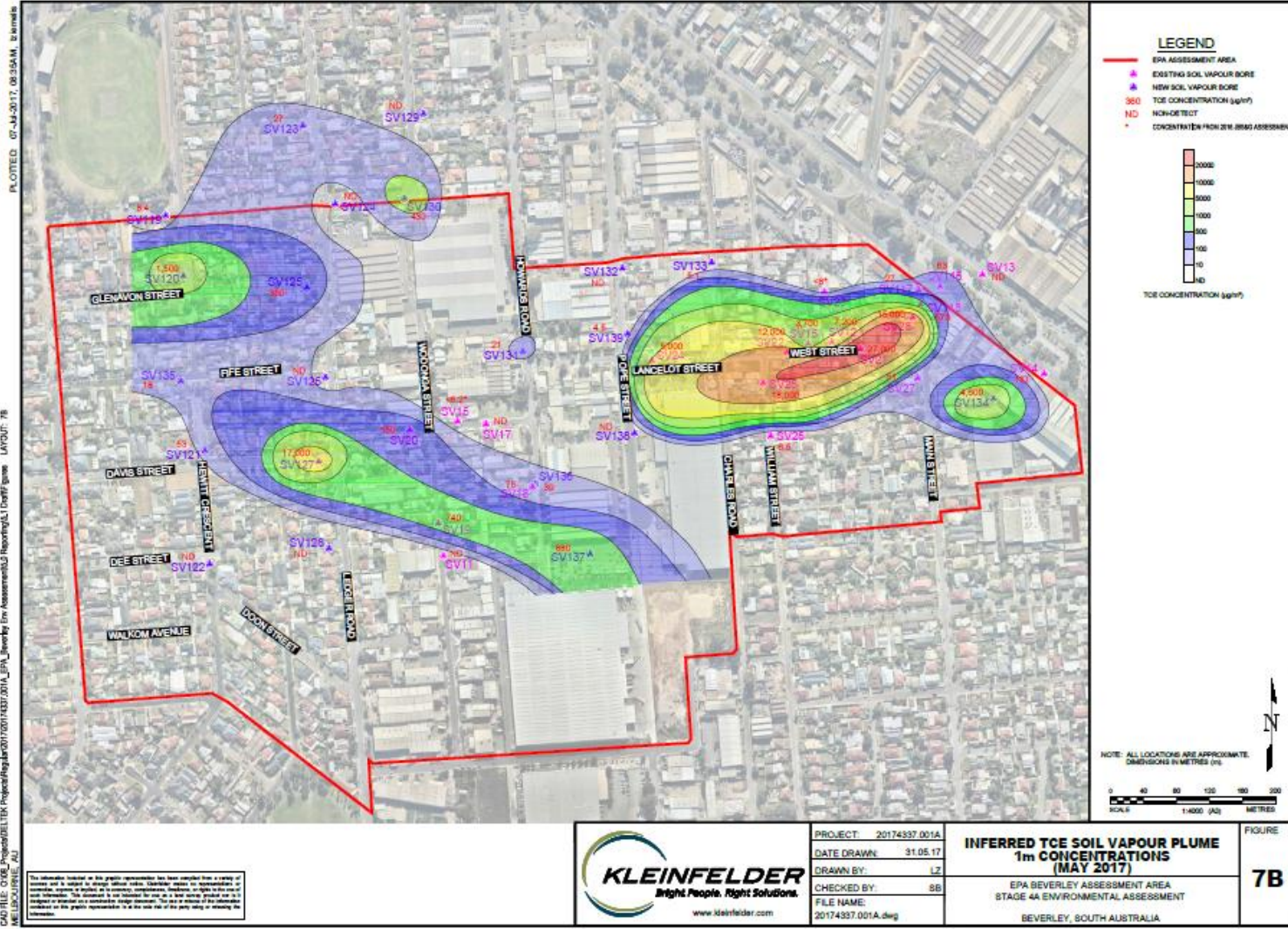
**INFERRED DISSOLVED PHASE
TCE GROUNDWATER PLUME
(MAY 2017)**

EPA BEVERLEY ASSESSMENT AREA
STAGE 4A ENVIRONMENTAL ASSESSMENT

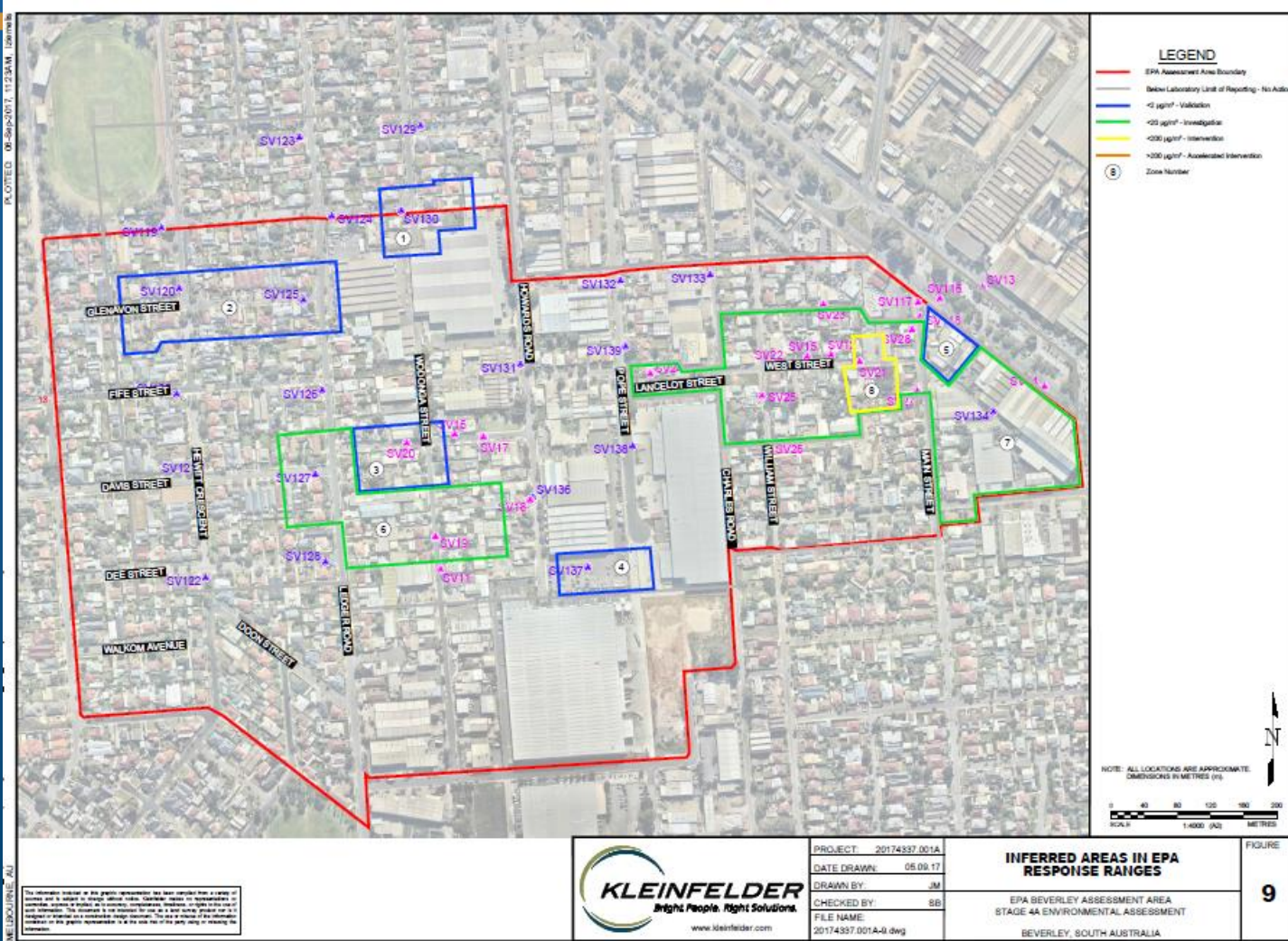
BEVERLEY, SOUTH AUSTRALIA

FIGURE
6B

Beverley Stage 4A update



Beverley Stage 4A update



Beverley Stage 4B update

- Total properties tested (overall): 30
 - 3 commercial/vacant land (all safe)
 - 27 residential
 - 2 no action (nothing detected) (predicted from crawl space)
 - 5 validation (above detection – less than 2 ($\mu\text{g}/\text{m}^3$)) (2 measured, 3 predicted from soil vapour/crawl space/sub-slab)
 - 15 investigation (2 – less than 20 ($\mu\text{g}/\text{m}^3$)) (14 measured, 1 predicted from crawl space)
 - 5 intervention (20 – less than 200 ($\mu\text{g}/\text{m}^3$)) (3 mitigated, 2 predicted from crawl space)

Thank you & questions

Tuesday 24 October 2017

