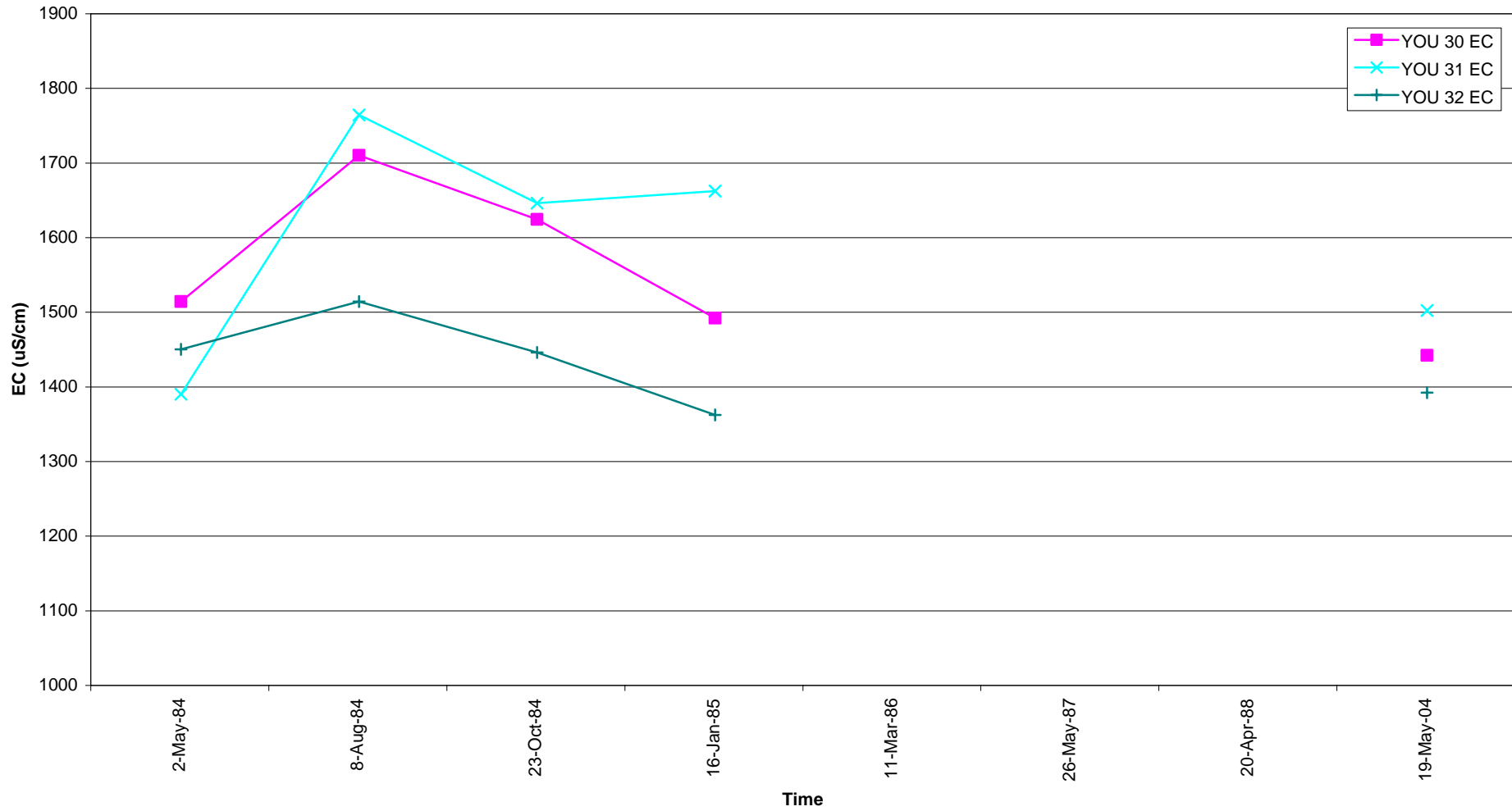


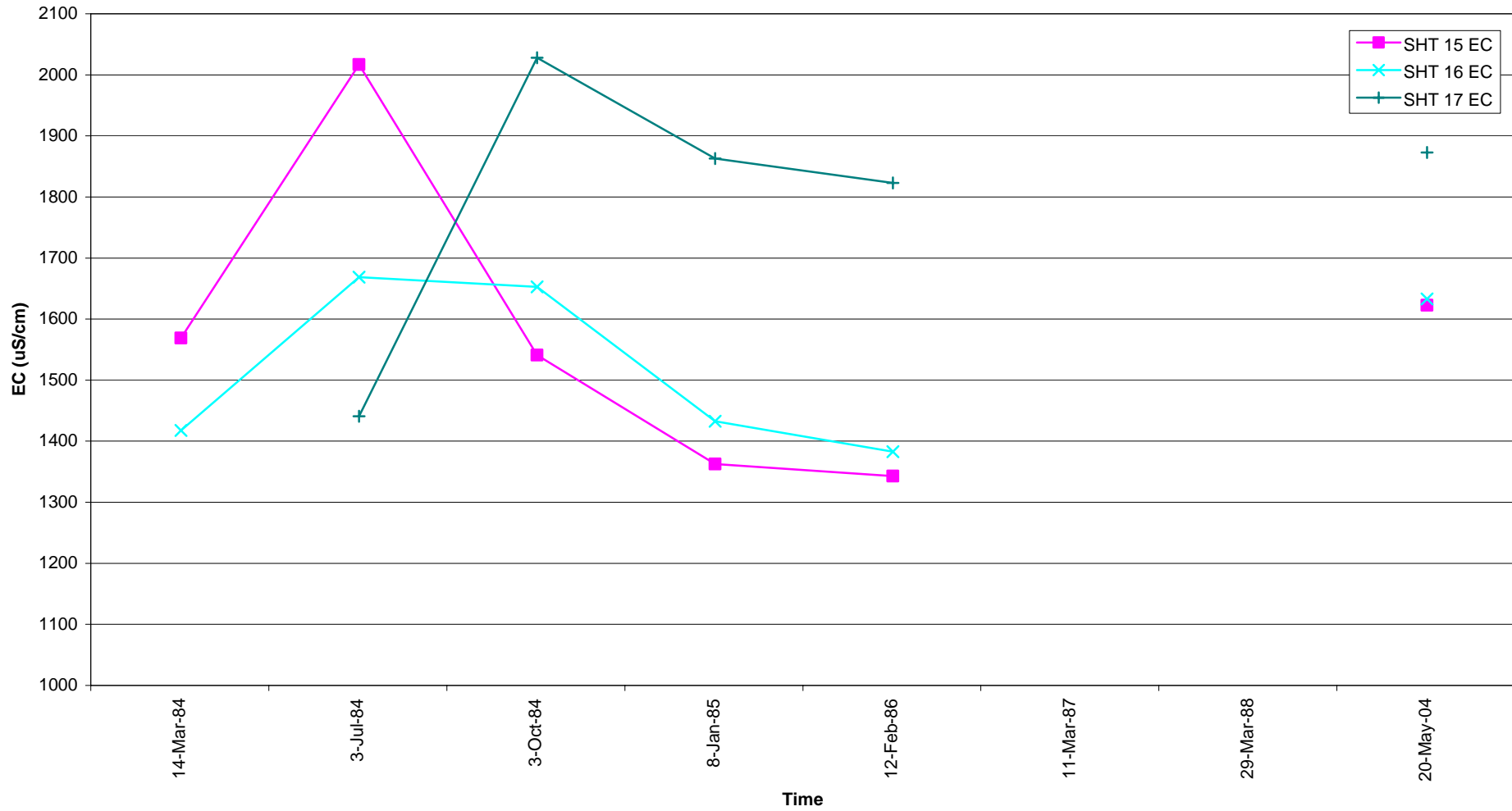
Appendix I
Selected Time Series Analyte
Concentrations

Stock Burial Site 4 (Burial Pit #280)
Well ID: YOU 30, YOU 31 and YOU 32 - Electrical Conductivity (EC)



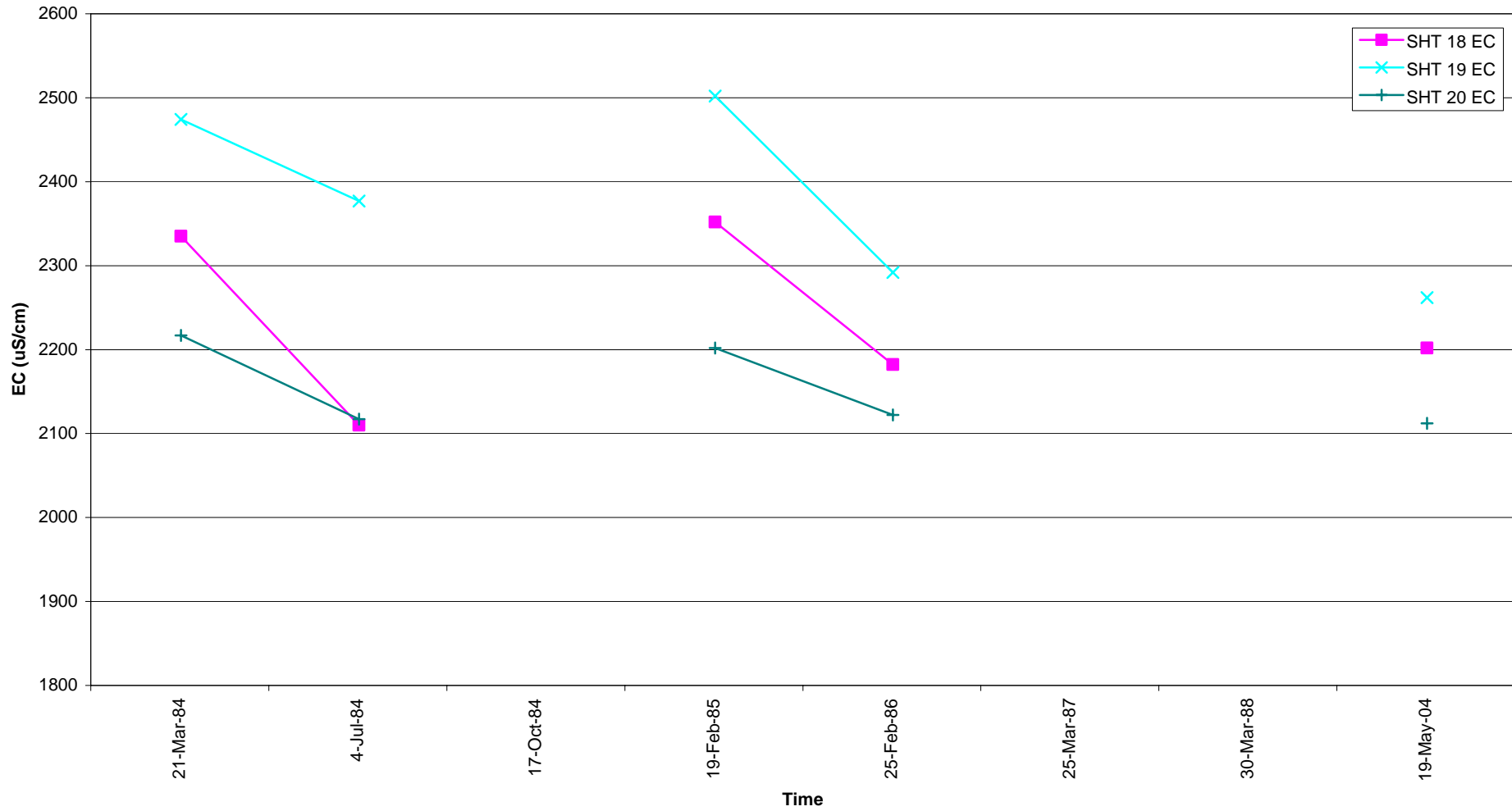
SHT 15-17 EC

Stock Burial Site 1 (Burial Pit #41)
Well ID: SHT 15, SHT 16 and SHT 17 - Electrical Conductivity (EC)



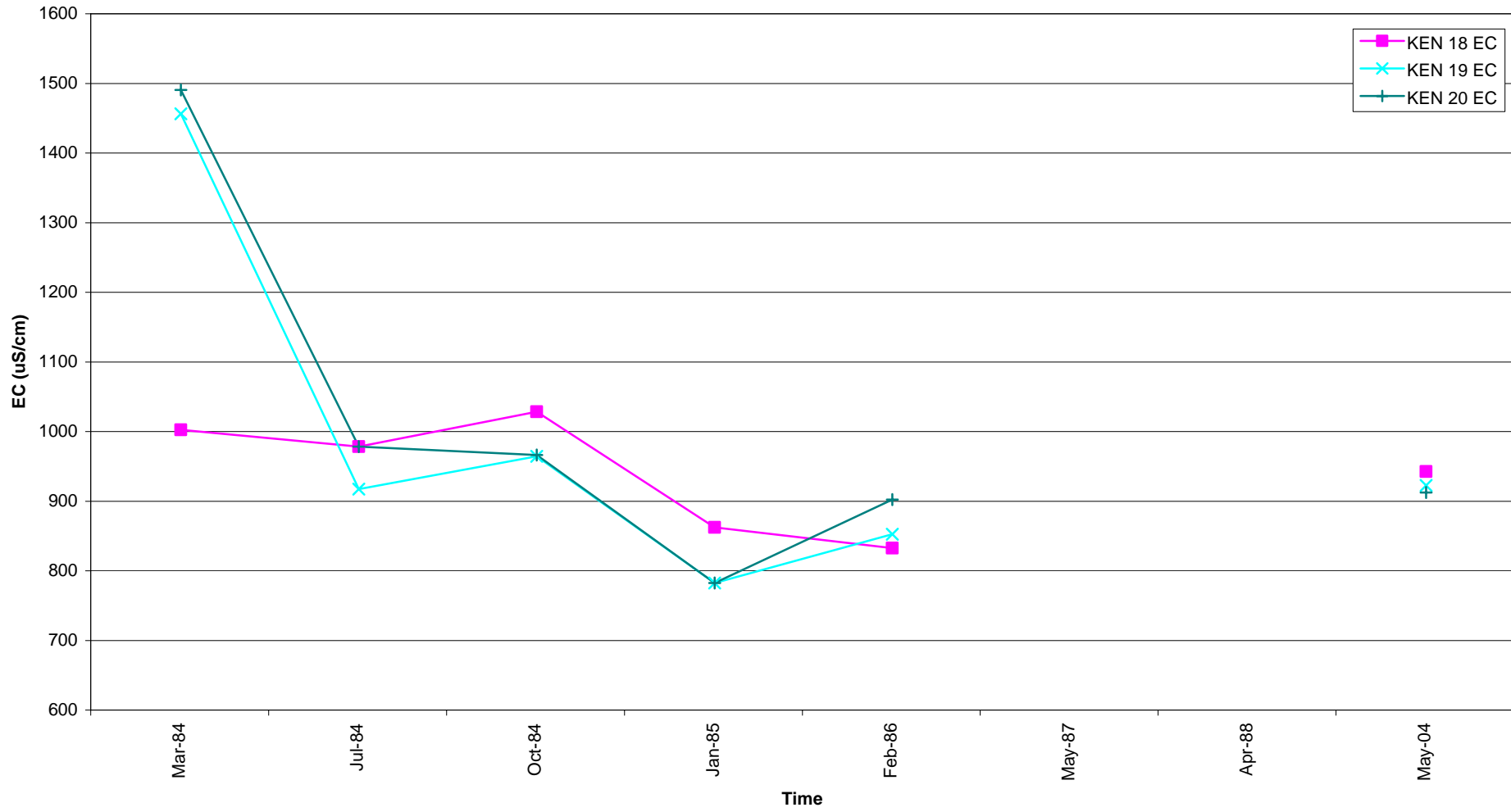
SHT 18-20 EC

Stock Burial Site 2 (Burial Pit #53)
Well ID: SHT 18, SHT 19 and SHT 20 - Electrical Conductivity (EC)

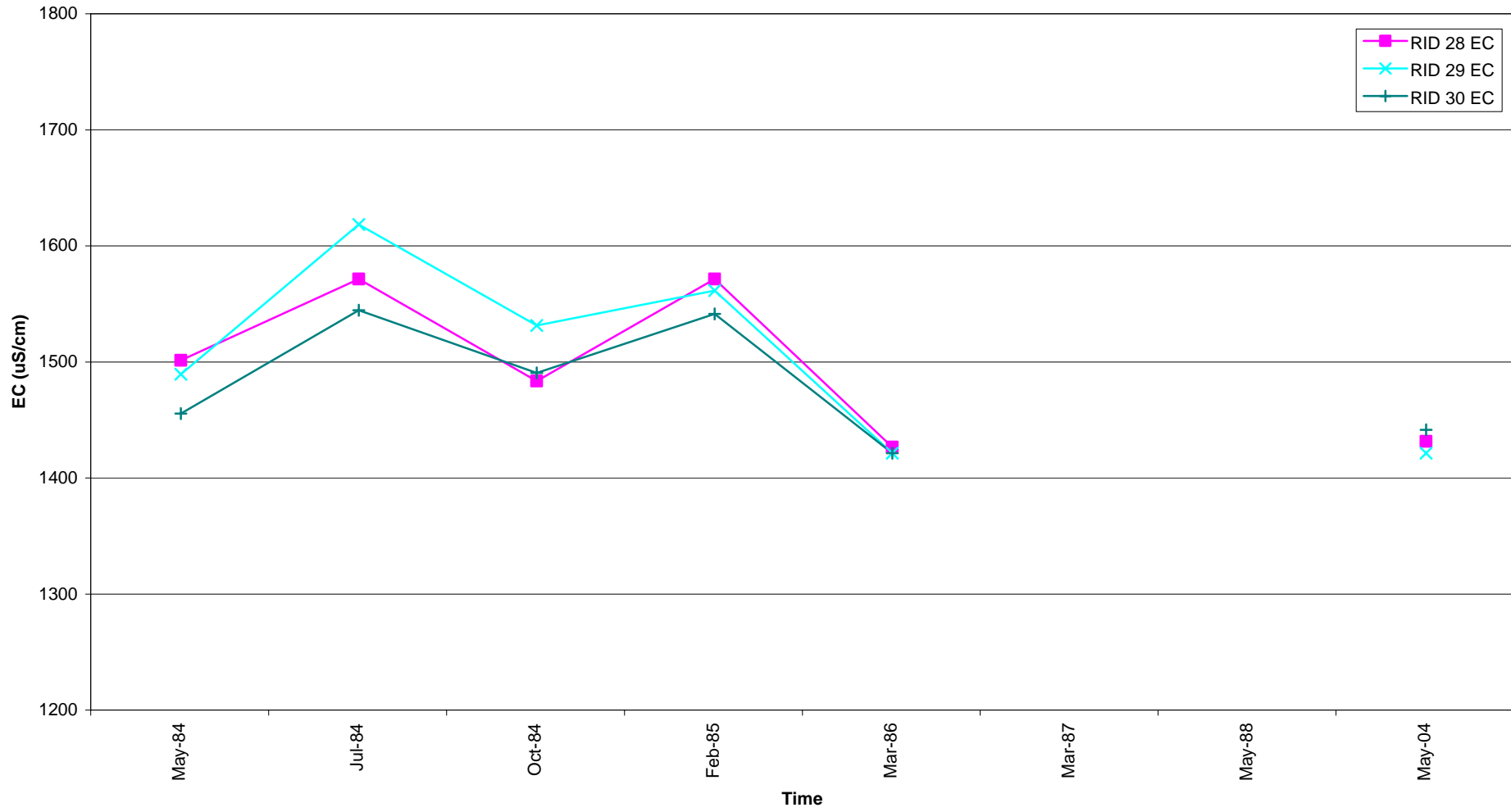


KEN 18-20 EC

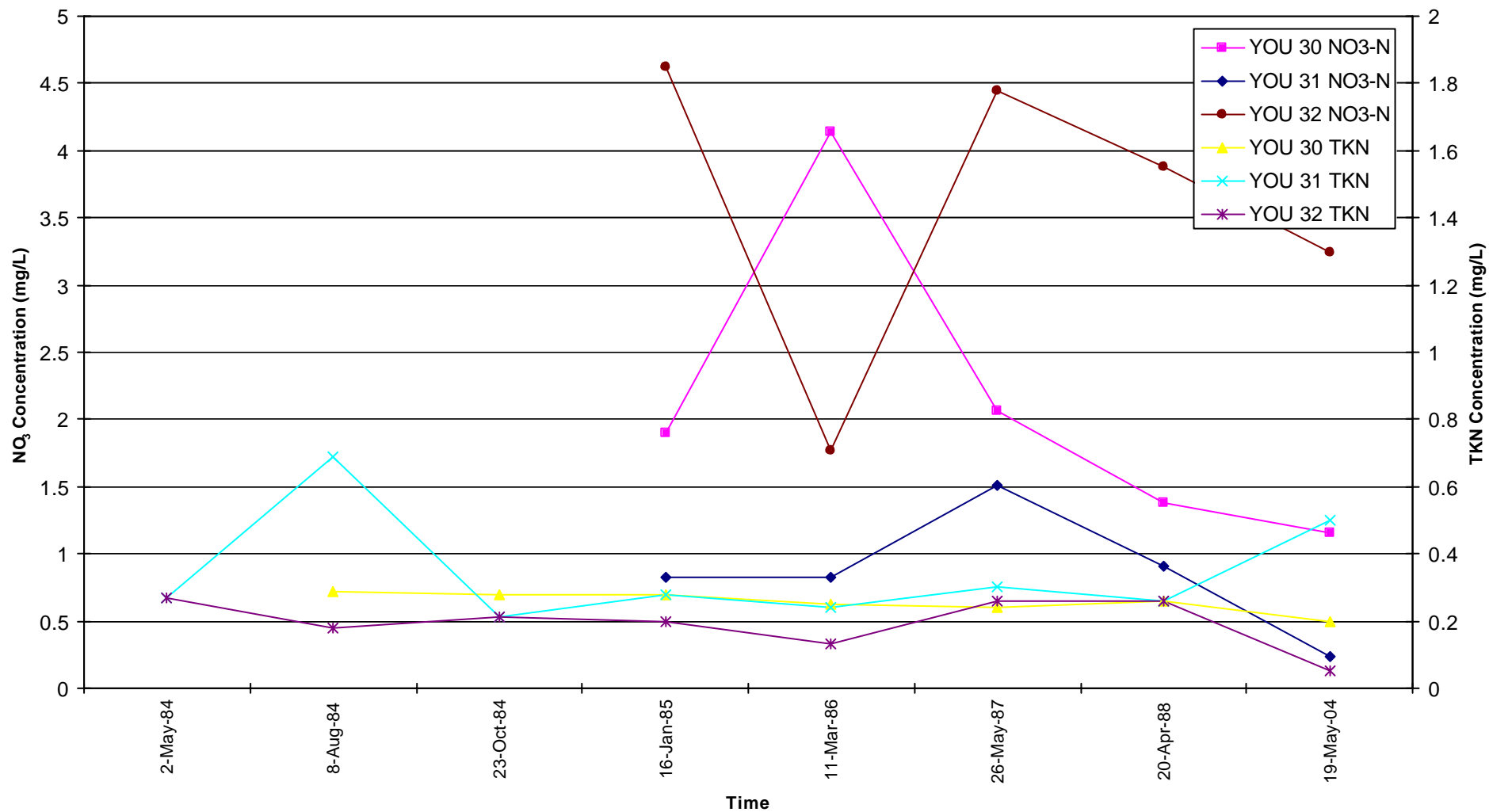
Stock Burial Site 3 (Burial Pit #110)
Well ID: KEN 18, KEN 19 and KEN 20 - Electrical Conductivity (EC)



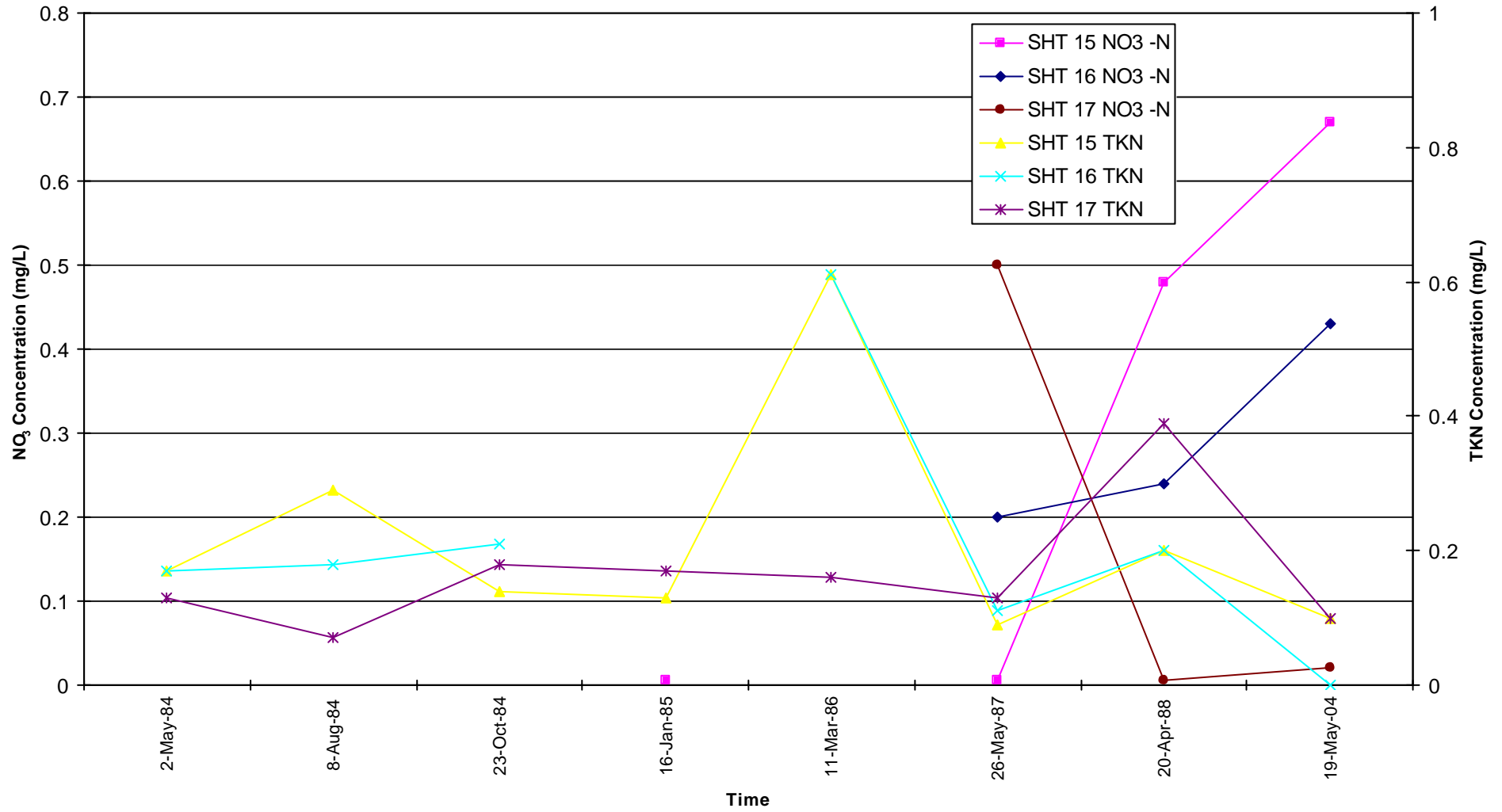
Stock Burial Site 5 (Burial Pit #202)
Well ID:RID 28, RID 29 and RID 30 - Electrical Conductivity (EC)



Stock Burial Site 4 (Burial Pit #280)
Well ID: YOU 30, YOU 31 and YOU 32 - Total Kjeldahl Nitrogen (TKN) and Nitrate (NO3)

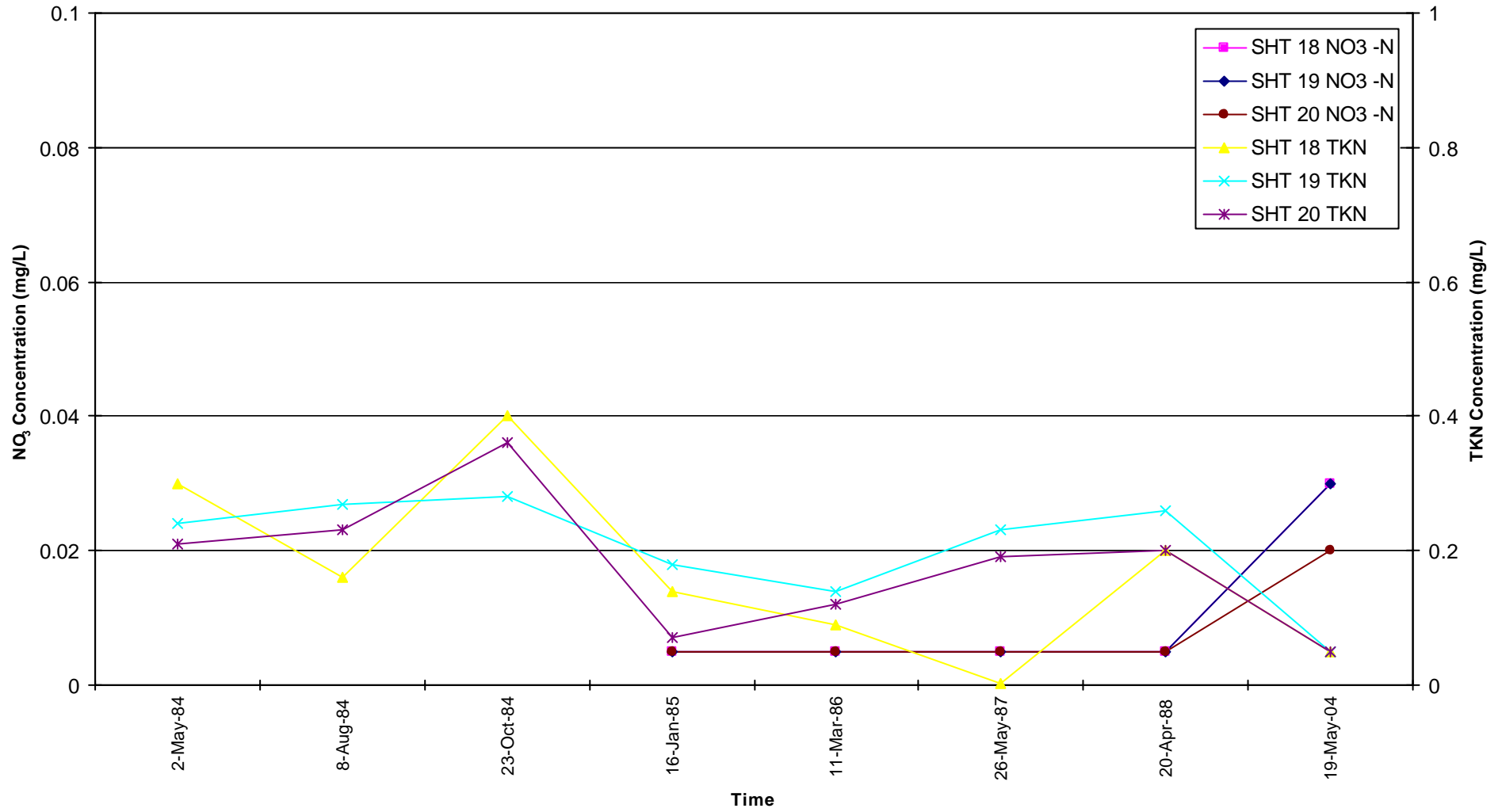


Stock Burial Site 1 (Burial Pit #41)
Well ID: SHT 15, SHT 16 and SHT 17 - Total Kjeldahl Nitrogen (TKN) and Nitrate (NO3)

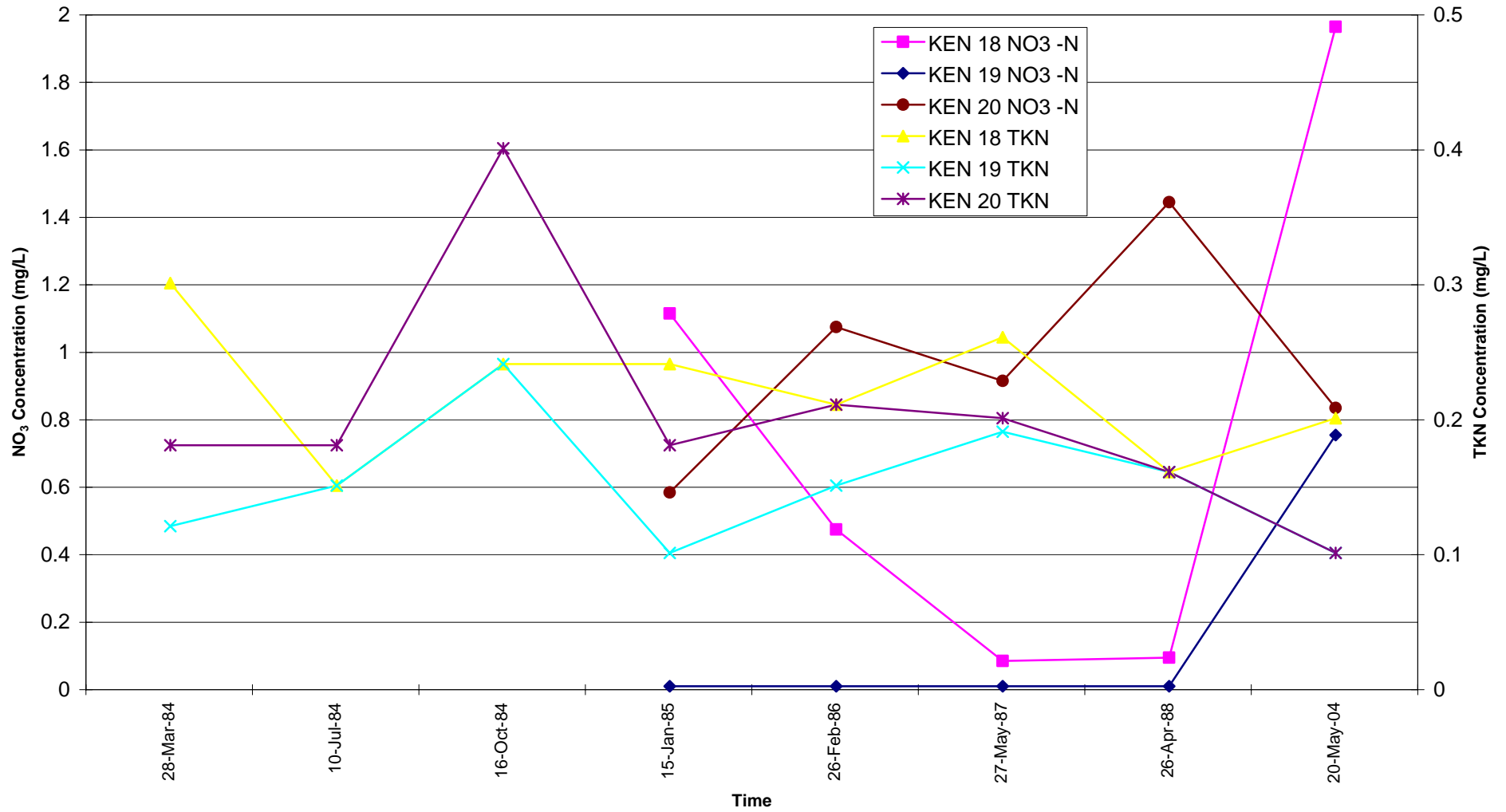


SHT 18-20 TKN and NO3

Stock Burial Site 2 (Burial Pit #53)
Well ID: SHT 18, SHT 19 and SHT 20 - Total Kjeldahl Nitrogen (TKN) and Nitrate (NO3)



Stock Burial Site 3 (Burial Pit #110)
Well ID: KEN 18, KEN 19 and KEN 20 - Total Kjeldahl Nitrogen (TKN) and Nitrate (NO3)



RID 28-30 TKN and NO3

Stock Burial Site 5 (Burial Pit #202)
Well ID: RID 28, RID 29 and RID 30 - Total Kjeldahl Nitrogen (TKN) and Nitrate (NO3)

