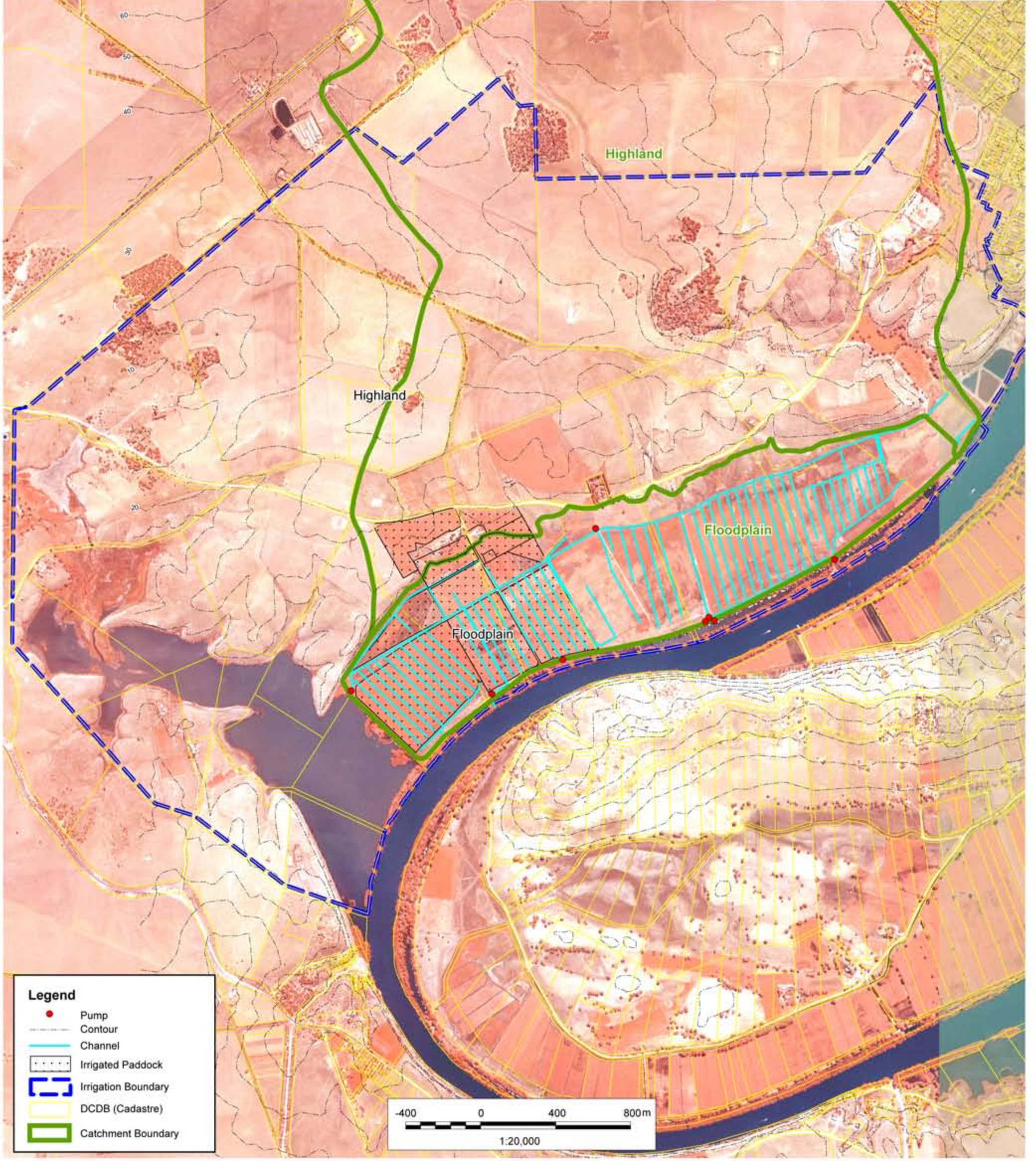




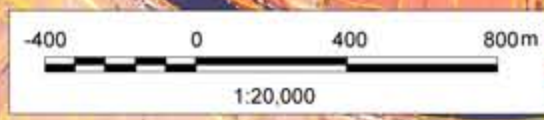
Catchment	Area (Ha)
Irrigated Floodplain	67
Non Irrigated Floodplain	158
Highland Irrigation	20
Buildings & Roads	2
Dryland	3061
Total Catchment	3308

	Volume (ML/Yr)	Portion of Drainage
Stormwater		
LMRIA Floodplain	14	2.1%
Highland Irrigation	3	0.4%
Buildings & Roads	4	0.5%
Dryland	50	7.4%
Surface Irrigation Drainage	496	73.3%
Groundwater		
Regional Groundwater	80	11.8%
Highland Irrigation Induced	30	4.4%
Drainage Pumped to River	676	



Legend

- Pump
- Contour
- Channel
- Irrigated Paddock
- Irrigation Boundary
- DCDB (Cadastre)
- Catchment Boundary



ADELAIDE
TONKIN CONSULTING
 5 COOKE TERRACE
 WAYVILLE SA 5034
 T +61 8 8273 3100
 F +61 8 8273 3110
 E adelaide@tonkin.com.au
 W www.tonkin.com.au

MAP DETAILS
 Cadastral Data: PIRSA
 Orthophoto: Georeality Pty Ltd
 Job Number: 2005.0423
 Filename: Baseby.wor
 Drawn: Tricia de Vink
 Date: 31/10/2008

ENVIRONMENT PROTECTION AUTHORITY
SOURCES & VOLUMES OF WATER & POLLUTANTS
ENTERING THE LMRIA DRAINAGE CHANNELS
BASEBY

Figure A.2