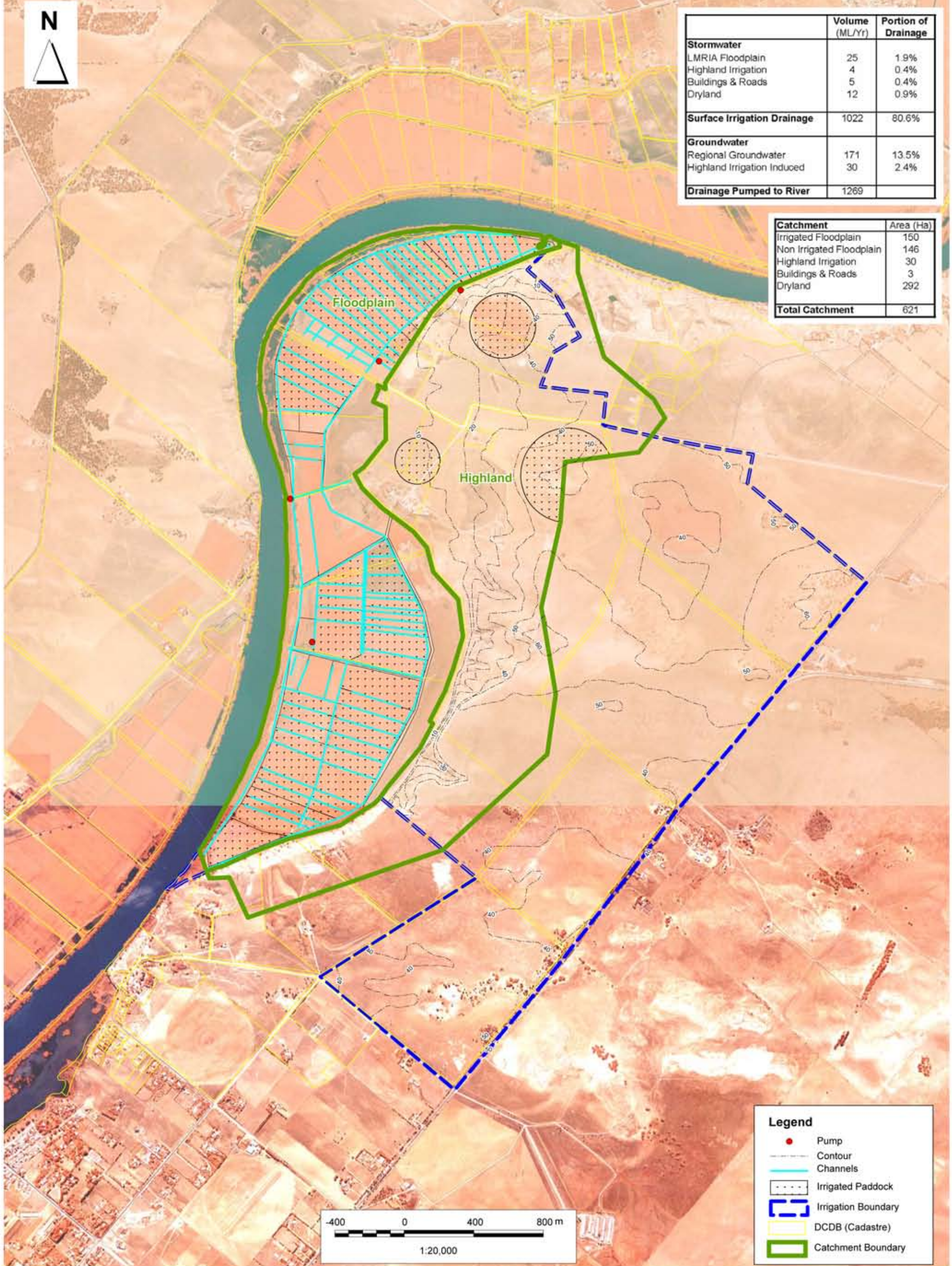


|                                    | Volume (ML/Yr) | Portion of Drainage |
|------------------------------------|----------------|---------------------|
| <b>Stormwater</b>                  |                |                     |
| LMRIA Floodplain                   | 25             | 1.9%                |
| Highland Irrigation                | 4              | 0.4%                |
| Buildings & Roads                  | 5              | 0.4%                |
| Dryland                            | 12             | 0.9%                |
| <b>Surface Irrigation Drainage</b> | 1022           | 80.6%               |
| <b>Groundwater</b>                 |                |                     |
| Regional Groundwater               | 171            | 13.5%               |
| Highland Irrigation Induced        | 30             | 2.4%                |
| <b>Drainage Pumped to River</b>    | 1269           |                     |

| Catchment                | Area (Ha)  |
|--------------------------|------------|
| Irrigated Floodplain     | 150        |
| Non Irrigated Floodplain | 146        |
| Highland Irrigation      | 30         |
| Buildings & Roads        | 3          |
| Dryland                  | 292        |
| <b>Total Catchment</b>   | <b>621</b> |



| Legend |                     |
|--------|---------------------|
| ●      | Pump                |
| —      | Contour             |
| —      | Channels            |
| ⋯      | Irrigated Paddock   |
| ---    | Irrigation Boundary |
| ---    | DCDB (Cadastral)    |
| ---    | Catchment Boundary  |

