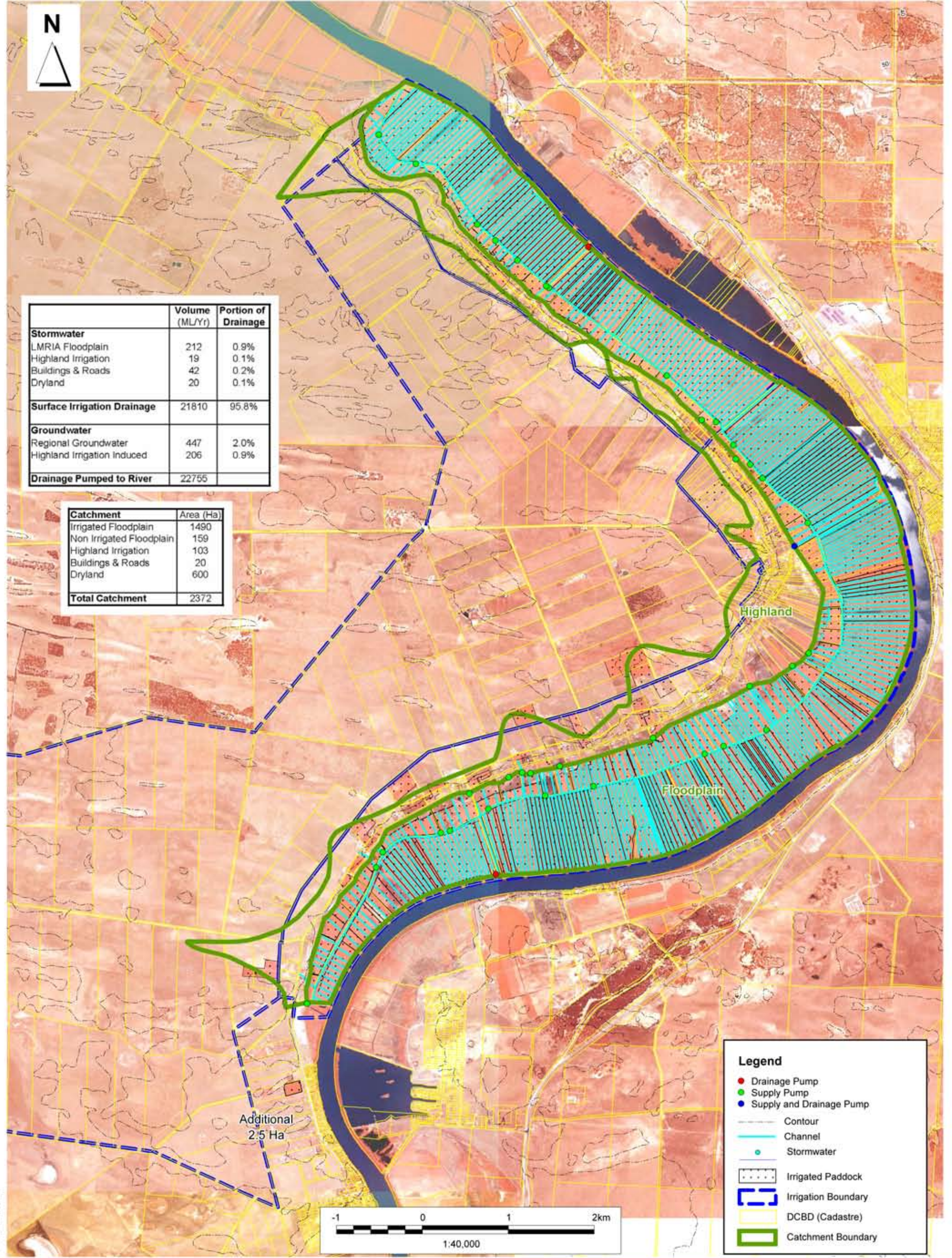




	Volume (ML/Yr)	Portion of Drainage
Stormwater		
LMRIA Floodplain	212	0.9%
Highland Irrigation	19	0.1%
Buildings & Roads	42	0.2%
Dryland	20	0.1%
Surface Irrigation Drainage	21810	95.8%
Groundwater		
Regional Groundwater	447	2.0%
Highland Irrigation Induced	206	0.9%
Drainage Pumped to River	22755	

Catchment	Area (Ha)
Irrigated Floodplain	1490
Non Irrigated Floodplain	159
Highland Irrigation	103
Buildings & Roads	20
Dryland	600
Total Catchment	2372



Legend	
●	Drainage Pump
●	Supply Pump
●	Supply and Drainage Pump
—	Contour
—	Channel
●	Stormwater
▨	Irrigated Paddock
▭	Irrigation Boundary
▭	DCBD (Cadastre)
▭	Catchment Boundary



ADELAIDE
TONKIN CONSULTING
 5 COOKE TERRACE
 WAYVILLE SA 5034
 T +61 8 8273 3100
 F +61 8 8273 3110
 E adelaide@tonkin.com.au
 W www.tonkin.com.au

MAP DETAILS
 Cadastral Data: PIRSA
 Orthophoto: Georeality Pty Ltd
 Job Number: 2005.0423
 Filename: Jervois.wor
 Drawn: Tricia de Vink
 Date: 31/10/2006

Environment Protection Authority
SOURCES & VOLUMES OF WATER & POLLUTANTS
ENTERING THE LMRIA DRAINAGE CHANNELS
JERVOIS

Figure A.16