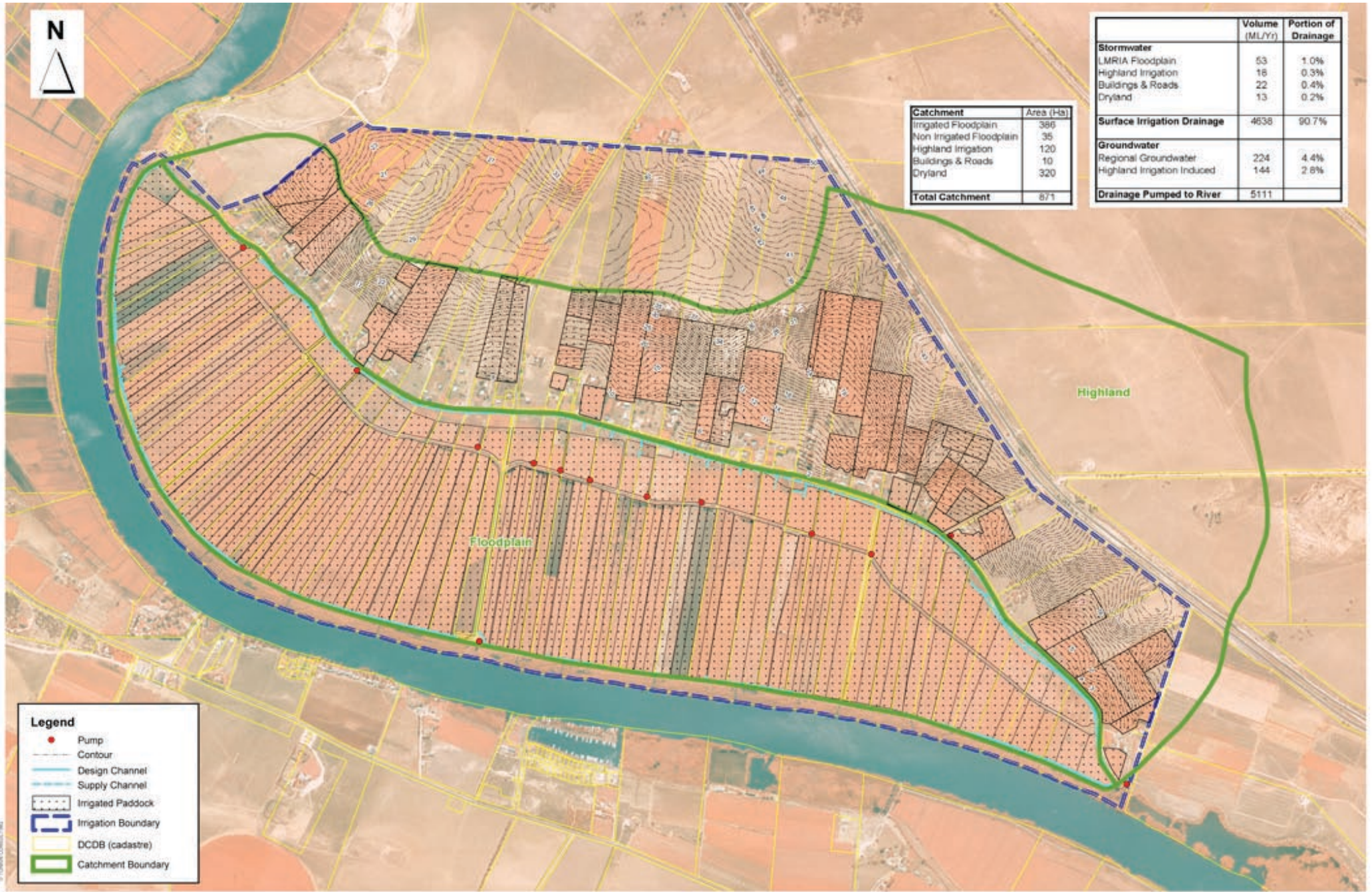




Catchment	Area (Ha)
Irrigated Floodplain	386
Non Irrigated Floodplain	35
Highland Irrigation	120
Buildings & Roads	10
Dryland	320
<b>Total Catchment</b>	<b>671</b>

	Volume (ML/Yr)	Portion of Drainage
<b>Stormwater</b>		
LMRIA Floodplain	53	1.0%
Highland Irrigation	18	0.3%
Buildings & Roads	22	0.4%
Dryland	13	0.2%
<b>Surface Irrigation Drainage</b>		
	4638	90.7%
<b>Groundwater</b>		
Regional Groundwater	224	4.4%
Highland Irrigation Induced	144	2.8%
<b>Drainage Pumped to River</b>	<b>5111</b>	



Legend	
<span style="color: red;">●</span>	Pump
	Contour
	Design Channel
	Supply Channel
	Irrigated Paddock
	Irrigation Boundary
	DCDB (cadastre)
	Catchment Boundary

**ADELAIDE**  
**TONKIN CONSULTING**  
 5 COOKE TERRACE  
 WAYVILLE SA 5034  
 T +61 8 8273 3100  
 F +61 8 8273 3115  
 E adelaide@tonkin.com.au  
 W www.tonkin.com.au

MAP DETAILS

Cadastral Data: PIRSA  
 Orthophoto: Georeality Pty Ltd  
 Job Number: 2005\_0423  
 Filename: Monteiith wor  
 Drawn: Tricia de Vink  
 Date: 31/10/2005



1:15,000

**Environment Protection Authority**  
**SOURCES & VOLUMES OF WATER & POLLUTENTS**  
**ENTERING THE LMRIA DRAINAGE CHANNELS**  
**MONTEITH**

Figure A.14