

TO THE RESIDENT

Dear Resident

Re: Brighton environmental assessment work

I am writing to advise that the Environment Protection Authority (EPA) will be undertaking an environmental assessment in the Brighton area.

The EPA is aware of potential site contamination in this area and has been notified that chemicals, including tetrachloroethene (also known as PCE), have been detected in soil vapour. The chemicals are generally associated with historic industrial or manufacturing activities, including dry cleaning.

Further assessment is required to determine whether groundwater has been impacted by PCE. If it is, it can potentially move up through the soil as vapour. When this happens near residential properties, vapour can potentially enter into indoor air.

The EPA will be undertaking environmental assessments in the area to find the potential cause and will write to you again with our results.

The work will commence in March 2018 and will involve the sampling of up to 20 temporary soil vapour bores. It is expected testing will take approximately 2 weeks to complete.

Groundwater (bore water) in this area is likely to be contaminated and the EPA suggests you should no longer use this for any purpose. Mains water supplied by SA Water is not affected by this issue. Home grown fruit and vegetables are safe to consume, provided they are not watered with bore water.

Please find attached a map of the assessment area, and an invitation to a community information session, where you can talk with EPA staff about these works, as well as a fact sheet that contains further information.

If you have any further questions please phone 1800 729 175 or email engage.epa@sa.gov.au.

Yours sincerely

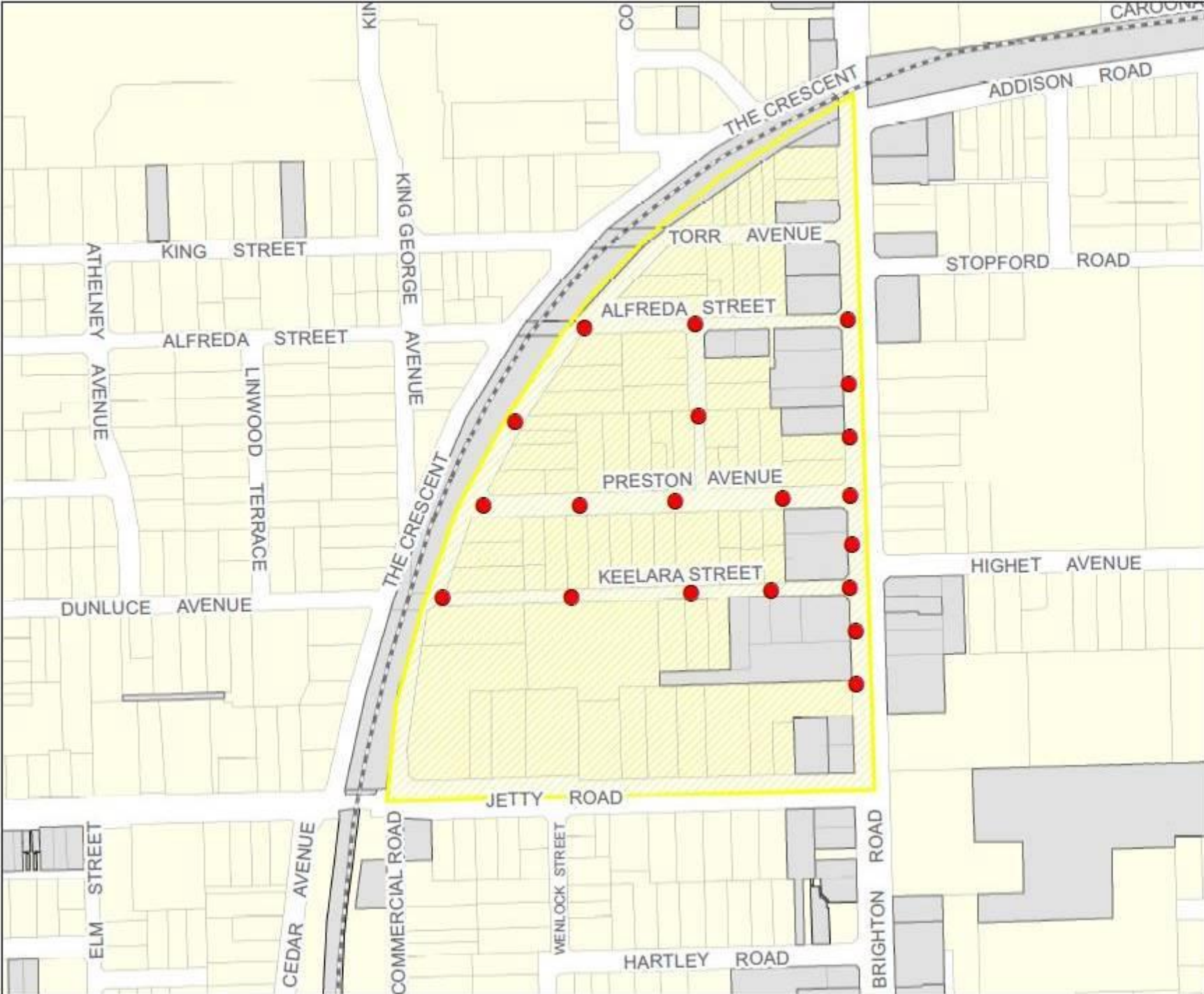


Andrew Pruszinski
MANAGER SITE CONTAMINATION
ENVIRONMENT PROTECTION AUTHORITY

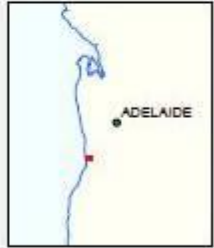
Date: 19 February 2018

Για να ζητήσετε ένα αντίγραφο της παρούσας επιστολής στην ελληνική γλώσσα, παρακαλούμε τηλεφωνήστε στο 13 14 50. | 为了要求这封信普通话的副本 · 请致电 13 14 50. | Per richiedere una copia di questa lettera in italiano, si prega di telefonare 13 14 50.

Brighton Assessment Area



- Proposed soil vapor locations
- Rail
- Assessment area
- Commercial land use



Produced by Knowledge, Information & Strategy
 Environment Protection Authority
 GPO Box 2807 Adelaide SA 5001
 Web: www.epa.sa.gov.au
 Data Source: DCSI, EPA
 Compiled: 18 December 2017
 Projection: Lambert Conformal Conic
 Datum: Geocentric Datum of Australia, 1984

© Copyright Environment Protection Authority 2017.
 All Rights Reserved. All content and information displayed are subject to Copyright. For the reproduction or publication of material requires the Copyright owner's written permission must be sought from the Department.
 Although every effort has been made to ensure the accuracy of the information displayed on this map, the Department, its agencies, officers and employees make no representation, either express or implied, that the information displayed is accurate or fit for any purpose and expressly disclaims all liability for loss or damage arising from reliance upon the information displayed.