



UNLEY ASSESSMENT AREA

Community update #4 – completion of work

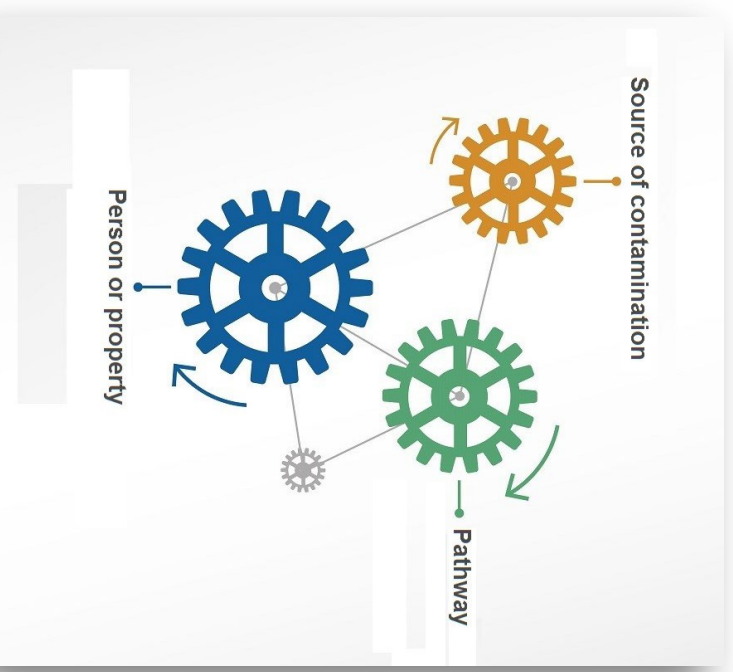
Issued 24 September 2019

The Environment Protection Authority (EPA) has completed a third and final stage of environmental assessment work in Unley (please see map overleaf).

The results from previous stages of work indicated that groundwater (bore water) is not contaminated with trichloroethene above drinking levels and residents may use their bore water – provided they test their bore regularly and it has been deemed safe for its intended use.

The final stage of work has confirmed that there is also no risk from groundwater vapour entering residential indoor air. The EPA has concluded its environmental assessment in Unley and no more work is planned.

If you would like further information, or to view past community updates or related reports, please contact the EPA on any of the details below.



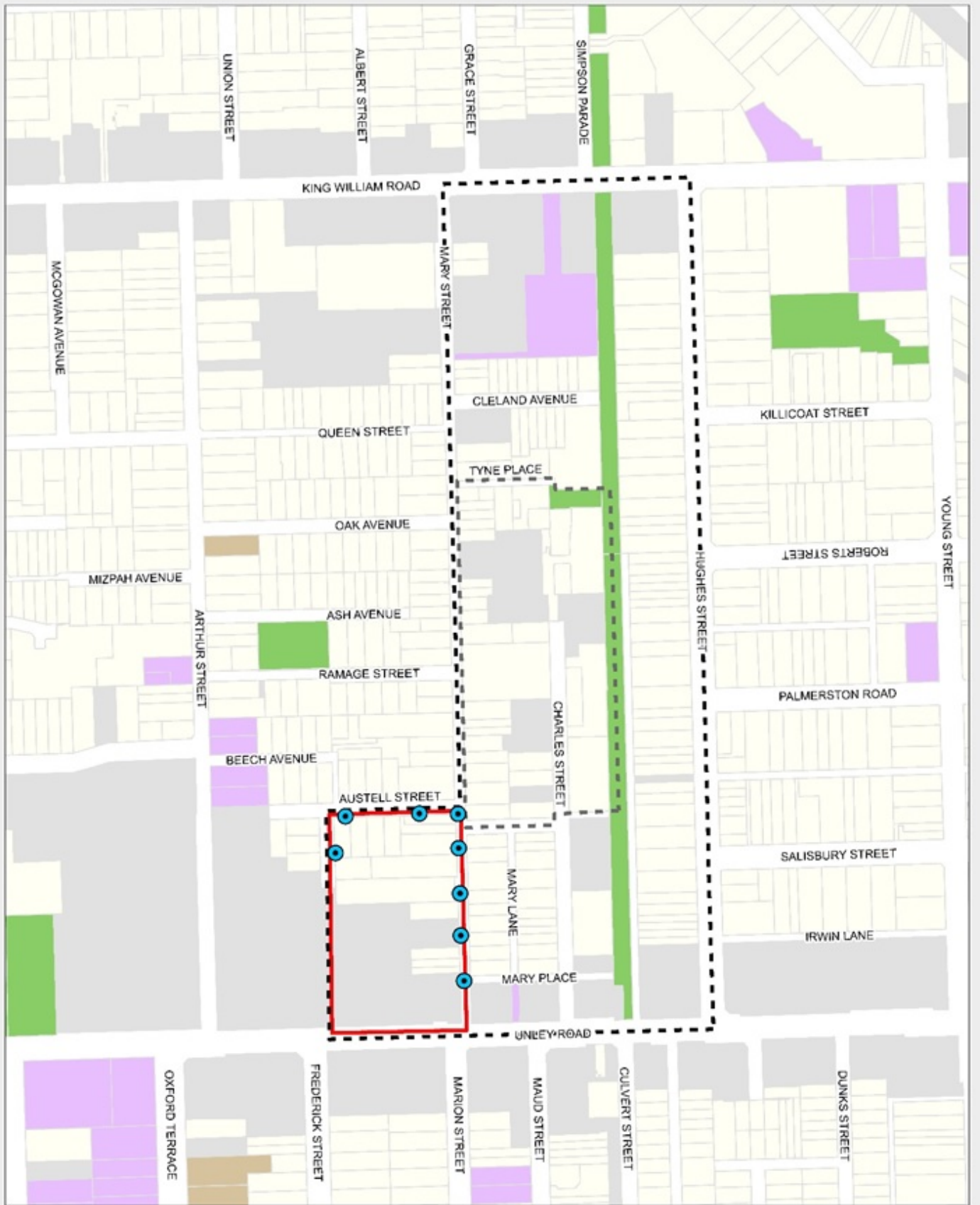
There is no risk to human health from groundwater contaminated with trichloroethene in the assessment area.

FURTHER INFORMATION

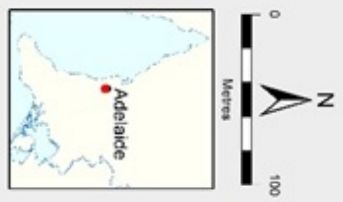
For further information please contact:
Environment Protection Authority
GPO Box 2607, Adelaide SA 5001
Telephone: (08) 8124 4216
Email: engage.epa@sa.gov.au
Website: www.epa.sa.gov.au
(Follow the links to 'Site Contamination' then 'Assessment Areas')

For health related information please contact:
Scientific Services Branch
SA Health
Telephone: (08) 8226 7100
Email: public.health@health.sa.gov.au
Website: www.sahhealth.sa.gov.au
(Type 'trichloroethene' into the search bar on the SA Health homepage)

**Figure 1 - Unley
Stage 3 Assessment**



- Residential
- Commercial/Industry/Vacant
- Parks and Reserves
- Education
- Public Institution
- Assessment Area Stage 1
- Assessment Area Stage 2
- Assessment Area Stage 3
- Bore Location



Prepared by Knowledge, Information & Strategy
 Environmental Protection Authority
 GPO Box 2007 Adelaide SA 5001
 Date Source: 2019, EPA
 Completed: 20 Aug. 2019
 Projection: Lambert Conformal Conic
 Datum: Geocentric Datum of Australia, 1984

© 2019 Knowledge, Information & Strategy, Environmental Protection Authority. All rights reserved. This document is the property of the Environmental Protection Authority. It is to be used for the purposes for which it was prepared and no other use is permitted without the prior written consent of the Environmental Protection Authority. The Environmental Protection Authority is not responsible for any loss or damage arising from the use of this document.

