



Compliance Plan

2022–23

Our targeted interventions provide a focus for our compliance activity for 2022–23

We will:

SET STANDARDS

- Improve capture and analysis of data to strengthen regulatory oversight of the waste and resource recovery sector.
- Engage with industry to deliver risk-based and best practice regulations for the *Radiation Protection and Control Act 2021*.
- Undertake a review of the *Environment Protection (Waste to Resources) Policy 2010* to support a more circular economy.
- Finalise the EPA Information Sheet *Financial Assurances and Landfills: Who, When, What and How Much* for landfill site requirements regarding secure closure obligations.
- Track performance and implement and improve systems and processes to ensure consistency and proportionality in decision making.

INFORM

- Review the guideline and education materials supporting the Single-use Plastics ban compliance program.
- Provide access to regulatory instruments and documents via the EPA Public Register, with information on significant matters published on the EPA website.
- Treat statutory public notification requirements as the minimum, expanding consultation where a matter is of wider interest.

ENABLE

- Encourage regulated facilities to develop meaningful relationships with their local communities and other stakeholders, and to share information publicly.
- Encourage and enable a circular economy.
- Support local government in the implementation of the *Local Nuisance and Litter Control Act 2016*.

MONITOR COMPLIANCE

- Targeted compliance program to monitor high-risk stockpiling activities across the waste and resource recovery sector including fire audits of priority licensed sites.
- Use a team-based approach to effectively oversee compliance and enforcement activities for complex and higher-risk licences.
- Undertake non-licensed compliance activities, in response to complaints or as planned programs where appropriate.

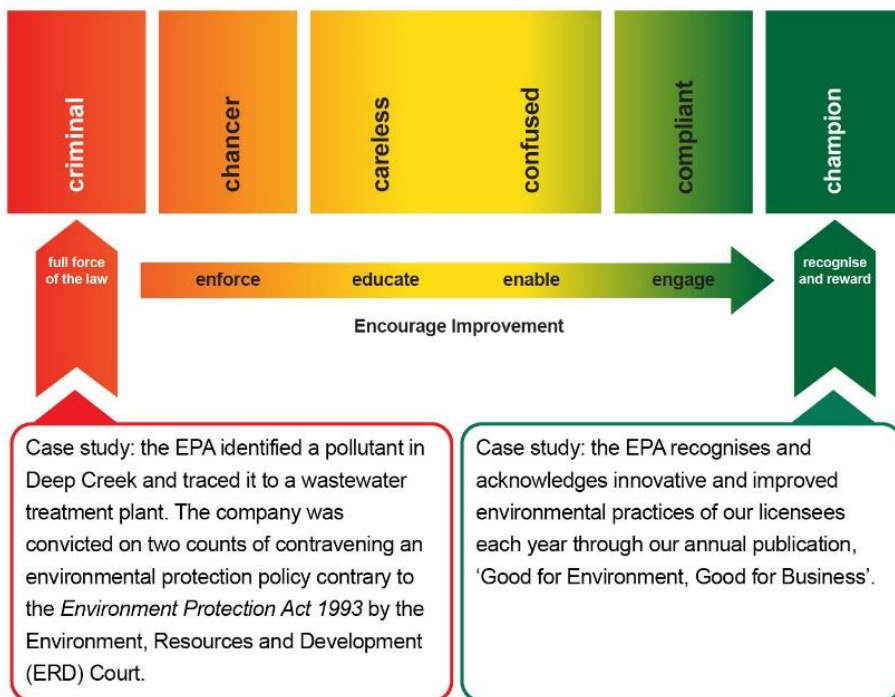
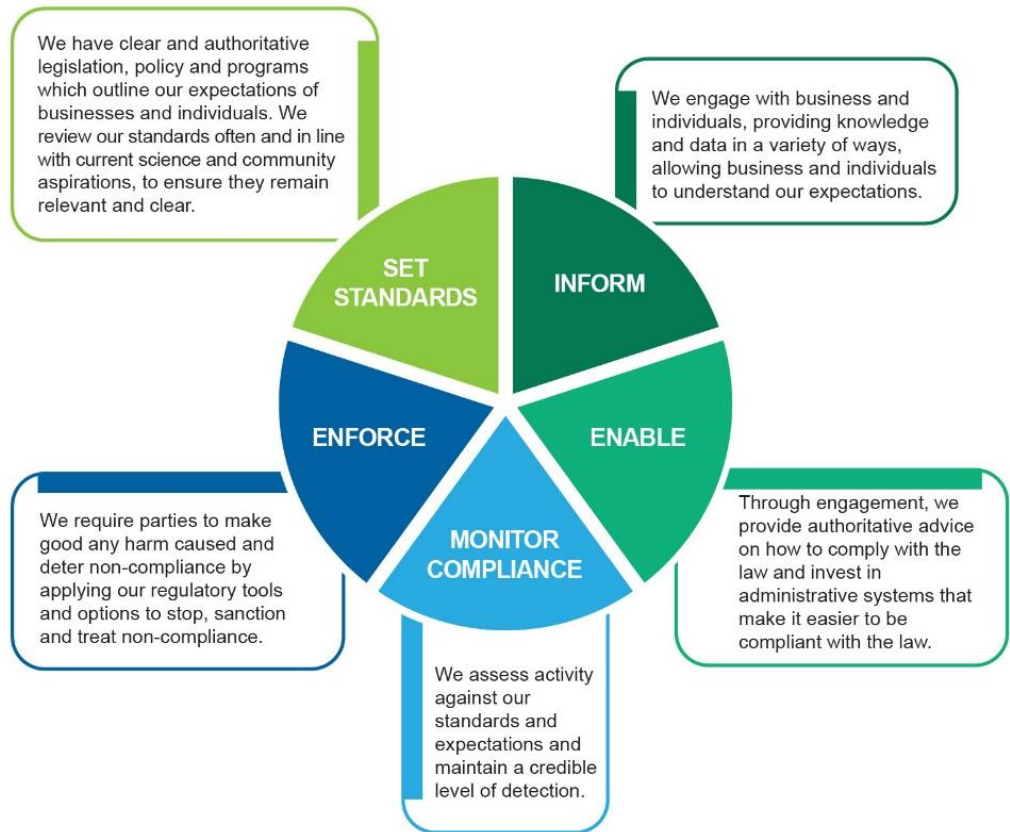
ENFORCE

- Target reckless or intentional criminal activity with investigations, prosecutions, fines and orders to restore the environment and pursue economic benefit.
- Provide 24 hour/7 days a week incident advice and response to support emergency services, industry and community.
- Take appropriate compliance actions in response to pollution incidents to prevent recurrence.

Our approach to compliance

For each issue, we have a range of strategies to achieve desired outcomes.

These vary from targeting enforcement of legislation to improving administration systems to make it easier for the regulated community to be compliant.



Our interventions and response

If we find a non-compliance, our priority is to stop, sanction and treat the non-compliance.

Our response is risk-based, proportionate to the actual or potential impact on the environment, and considers the attitude and compliance history of the alleged offender.