



## ROYAL PARK EPA ASSESSMENT AREA

### Community update #1

#### Issued August 2023

The Environment Protection Authority (EPA) is commencing an environmental assessment in a portion of Royal Park in August 2023.

The assessment is being undertaken to understand the groundwater quality in the area. Onsite activities will start in mid-late August (see box below).

The Royal Park EPA assessment area is located between the Hendon and surrounding suburbs Groundwater Prohibition Area (GPA) and the West Lakes EPA Assessment Area.

The EPA established a Groundwater Prohibition Area (GPA) in Hendon and surrounding suburbs to the east of the Royal Park EPA Assessment Area in 2019, and an EPA Assessment Area in West Lakes to the west in 2020.



Based on information collected as part of the [West Lakes Stage 1](#) assessment, it is suspected that shallow groundwater within the Royal Park assessment area may contain per- and poly-fluoroalkyl substances (PFAS) that are above drinking water guidelines.

The EPA has a statutory obligation under the *Land and Business (Sale and Conveyancing) Act 1994* to provide information relating to environment protection. This includes details of reports where an environmental assessment has been carried out by, or on behalf of, the EPA. Once a report is received, an interest will be flagged on all properties within the assessment area to ensure that future potential purchasers are aware that an assessment has been undertaken. In addition, if there is a risk to groundwater users identified, community consultation may commence regarding the establishment of a Groundwater Prohibition Area.

### The EPA to commence an environmental assessment

In the coming weeks, environmental consultants engaged by the EPA will drill a series of groundwater wells within streets and publicly accessible areas. Traffic management may be in place where required to protect the safety of workers and the public. All efforts will be made to minimise any inconvenience this work may cause.

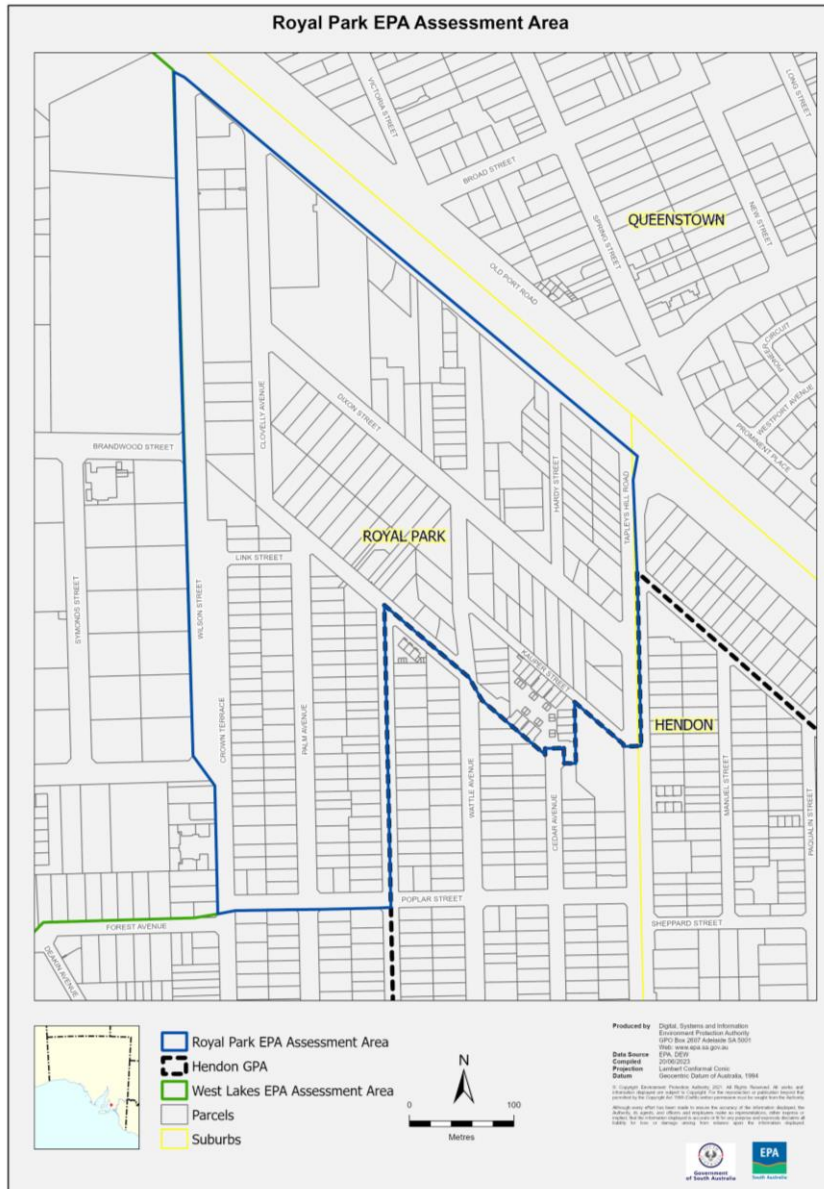
The groundwater will be sampled and sent to a laboratory for analysis. This work is likely to determine whether a groundwater prohibition area should be established, subject to community consultation.

The EPA is available during and after business hours at (08) 8429 7554, [engage.epa.sa.gov.au](https://engage.epa.sa.gov.au) or in person. Please contact us if you have any queries regarding this assessment.

# What are PFAS?

PFAS (per-and-polyfluoroalkyl substances) are chemicals that have been used in firefighting foams and other industrial activities for more than 50 years.

PFAS are highly soluble in water. This means they can easily move from soil to groundwater (bore water), where they can travel long distances.



## Please do not use bore water

Groundwater (bore water) in this area may be contaminated and should not be used for any purpose.

**Not all properties have access to groundwater. It is typically accessed via a bore connected to an outdoor pump.**

Tap water provided by SA Water is not affected. Rainwater is also not affected. Please call the EPA if you are unsure whether you have access to groundwater.

## Home-grown fruit and vegies are safe

Provided you are not watering them with bore water.

## Do you need a translator?

Gdybyś zechciał otrzymać tę informację w języku polskim, prosimy zadzwonić pod numer 13 14 50

Ако желите ово писмо на српском језику, молимо да назовете број 13 14 50/\*

Per richiedere una copia di questa lettera in italiano, si prega di telefonare 13 14 50

Αν θέλετε αυτές τις πληροφορίες στα Ελληνικά, παρακαλώ καλέστε το 13 14 50

FURTHER INFO

For further information please contact:

Environment Protection Authority

GPO Box 2607, Adelaide SA 5001

Telephone: (08) 8429 7554

Email: [engage.epa@sa.gov.au](mailto:engage.epa@sa.gov.au)

Website: [www.epa.sa.gov.au](http://www.epa.sa.gov.au) and follow the links to

'Environmental Info', 'Site Contamination', 'Assessment areas'

