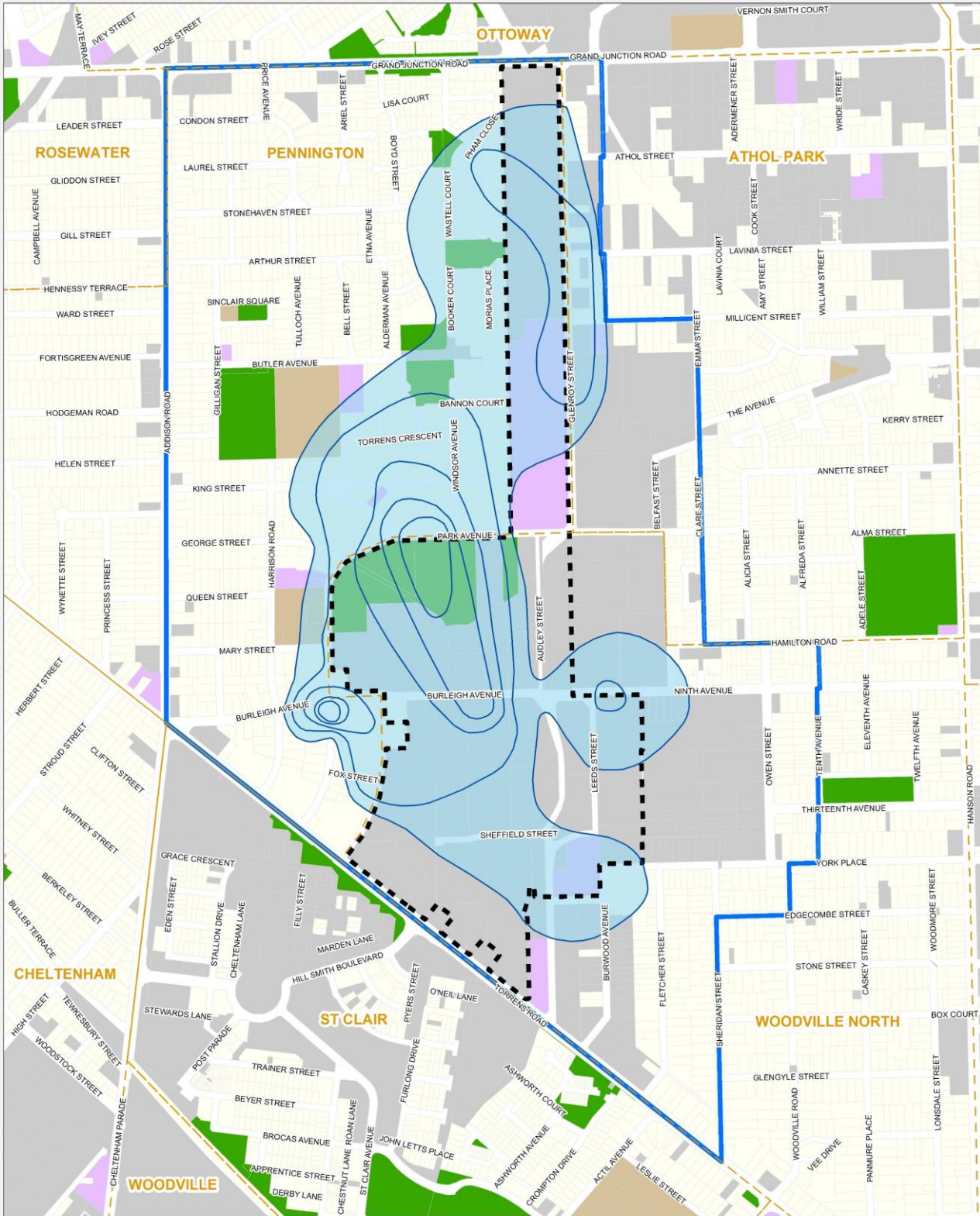
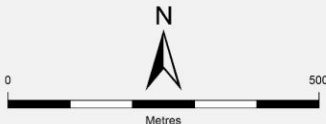


Woodville North, Athol Park & Pennington assessment area



- TCE in Groundwater
- Residential
- Commercial/Industry/Vacant
- Parks and Reserves
- Education
- Public Institution
- Assessment Area
- Former Finsbury Munitions Factory Area
- Suburb



Produced by Knowledge, Information & Strategy
 Environment Protection Authority
 GPO Box 2607 Adelaide SA 5001
 Web: www.epa.sa.gov.au

Data Source EPA, DEW
 Compiled 27 September 2019
 Projection Lambert Conformal Conic
 Datum Geocentric Datum of Australia, 1994

© Copyright for Environment Protection Authority 2019. All Rights Reserved. All works and information disclosed are subject to Copyright. For the reproduction or publication beyond that permitted by the Copyright Act 1968 (Cwth) written permission must be sought from the Authority. Although every effort has been made to ensure the accuracy of the information displayed, the Authority, its agents, and officers and employees make no representations, either express or implied, that the information displayed is accurate or fit for any purpose and expressly disclaims all liability for loss or damage arising from reliance upon the information displayed.

