

EPA 63001

Dear Resident

Re: Royal Park Environment Protection Authority (EPA) assessment area

In August 2023, the Environment Protection Authority (EPA) commenced an environmental assessment in parts of Royal Park. The environmental assessment found groundwater contaminated by per- and poly-fluoroalkyl substances (PFAS). You are receiving this letter because your property is located within the Royal Park EPA assessment area.

Results of recent environmental assessment

The environmental assessment has been undertaken to determine whether PFAS were present in shallow groundwater. Groundwater is water that is present underground within rocks or sediments and can be accessed by a bore typically connected to an outdoor pump.

The environmental assessment has identified that your property is located within an area where groundwater contamination is known to be present. Please do not use groundwater (bore water) for any purpose.

Further assessment is being undertaken to determine if a groundwater prohibition area (GPA) is required. The EPA will contact you again once this assessment has been completed.

For more information on environmental assessment completed at Royal Park please visit: https://www.epa.sa.gov.au/environmental_info/site_contamination/assessment_areas/royal-park

EPA Obligations pursuant to the *Land and Business (Sale and Conveyancing) Act 1994*

The EPA is required by the *Land and Business (Sale and Conveyancing) Act 1994* and its associated regulations to indicate its interest in certificates of title within EPA assessment areas where an environmental assessment report has been prepared. This interest will ensure that future potential purchasers are aware that an assessment has been undertaken.

As a result of the assessment undertaken by the EPA in the Royal Park EPA Assessment Area, the EPA holds a copy of an environmental assessment report. This is required to be placed in the EPA Public Register. For more information please visit: https://www.epa.sa.gov.au/public_register

This EPA interest in the certificate of title relates to being within the Royal Park EPA Assessment Area and is in addition to any other EPA interests that have previously been flagged on the title, should they exist.

If you have any questions or concerns then please contact the EPA community engagement team on (08) 8429 7554, email engage.epa@sa.gov.au or visit https://www.epa.sa.gov.au/environmental_info/site_contamination/assessment_areas/royal-park

Yours sincerely

Rebecca Hughes

**MANAGER SITE CONTAMINATION
ENVIRONMENT PROTECTION AUTHORITY**

Date: 8 January 2024



If you require assistance in translating this information:

Per richiedere una copia di questa lettera in italiano, si prega di telefonare 13 14 50.

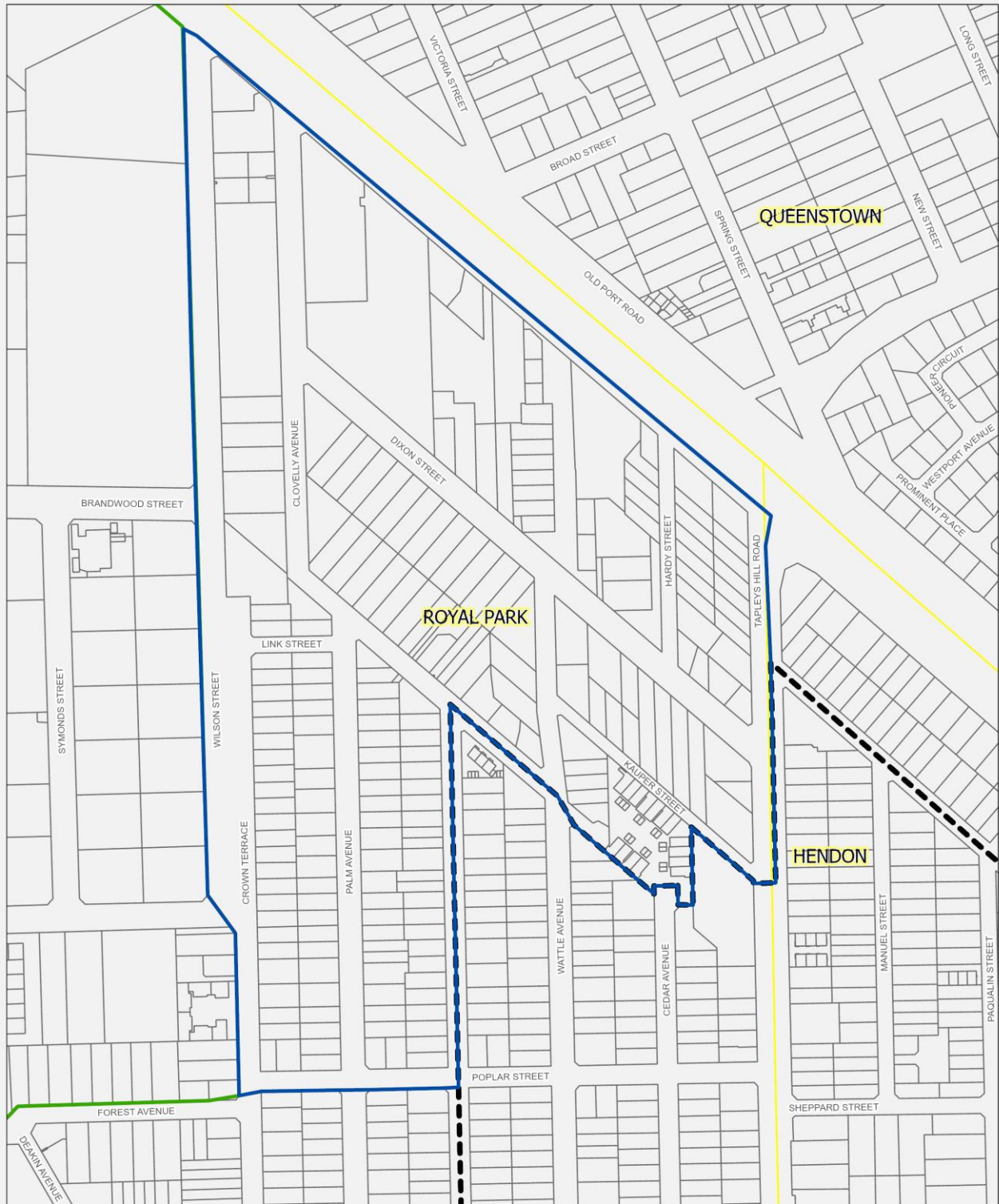
Αν θέλετε αυτές τις πληροφορίες στα Ελληνικά, παρακαλώ καλέστε το 13 14 50




ਜੇ ਤੁਸੀਂ ਇਹ ਜਾਣਕਾਰੀ ਪੰਜਾਬੀ ਵਿੱਚ ਲੈਣਾ ਚਾਹੁੰਦੇ ਹੋ, ਤਾਂ ਕਿਰਪਾ ਕਰ ਕੇ 13 14 50 ਤੇ ਕਾਲ ਕਰੋ

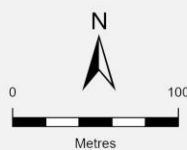
Nếu quý vị muốn biết thông tin này bằng Tiếng Việt, xin hãy gọi số điện thoại 13 14 50

Ако желите ово писмо на српском језику, молимо да назовете број 13 14 50

Royal Park EPA Assessment Area



-  Royal Park EPA Assessment Area
-  Hendon GPA
-  West Lakes EPA Assessment Area
-  Parcels
-  Suburbs



Produced by Digital, Systems and Information
Environment Protection Authority
GPO Box 2607 Adelaide SA 5001
Web: www.epa.sa.gov.au

Data Source EPA, DEW
Compiled 20/06/2023
Projection Lambert Conformal Conic
Datum Geocentric Datum of Australia, 1994

© Copyright Environment Protection Authority 2023. All Rights Reserved. All works and information displayed are subject to Copyright. For the reproduction or publication beyond that permitted by the Copyright Act 1969 (Cally) written permission must be sought from the Authority. Although every effort has been made to ensure the accuracy of the information displayed, the Authority, its agents, and officers and employees make no representations, either express or implied, that the information displayed is accurate or fit for any purpose and expressly disclaims all liability for loss or damage arising from reliance upon the information displayed.

