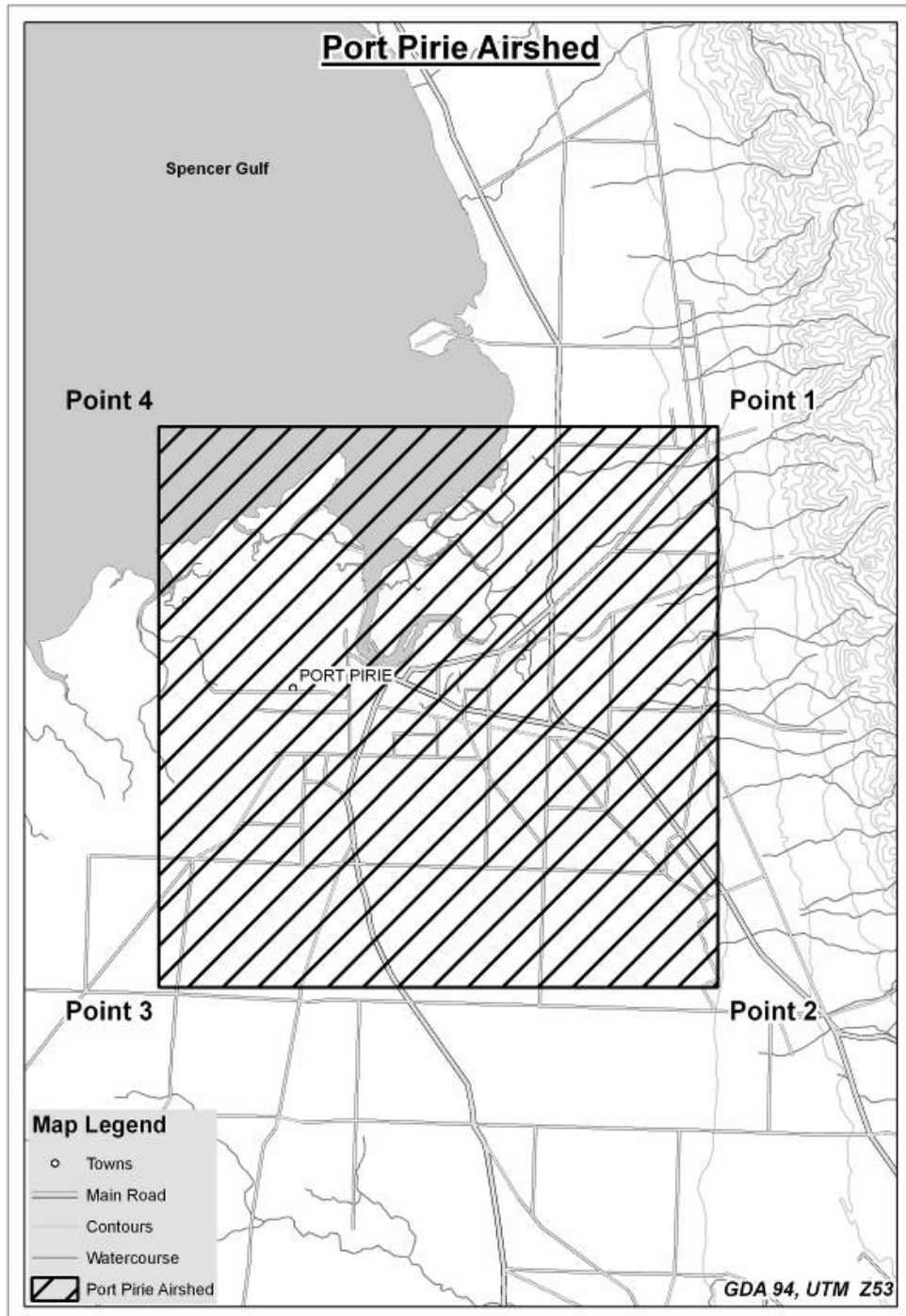
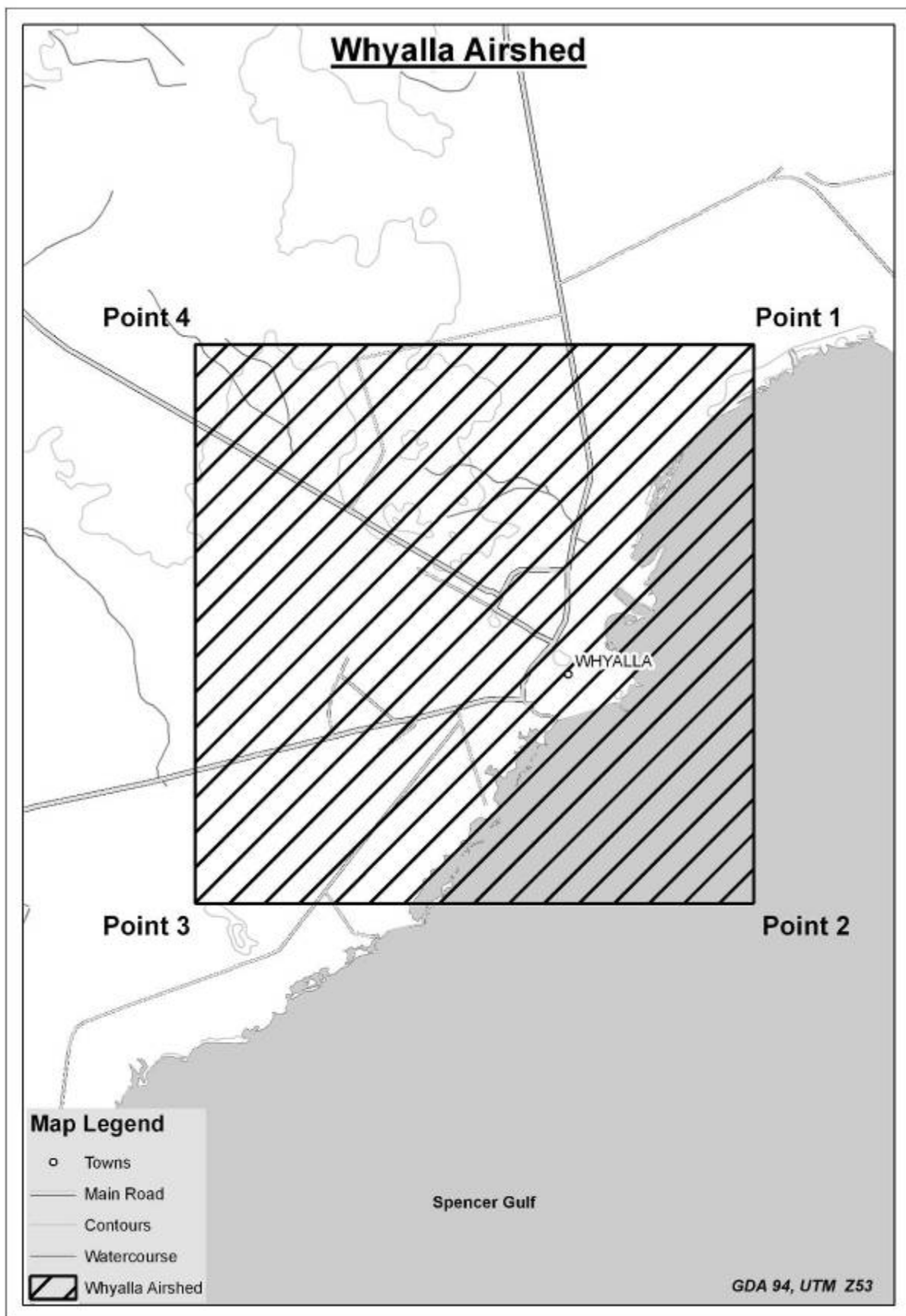


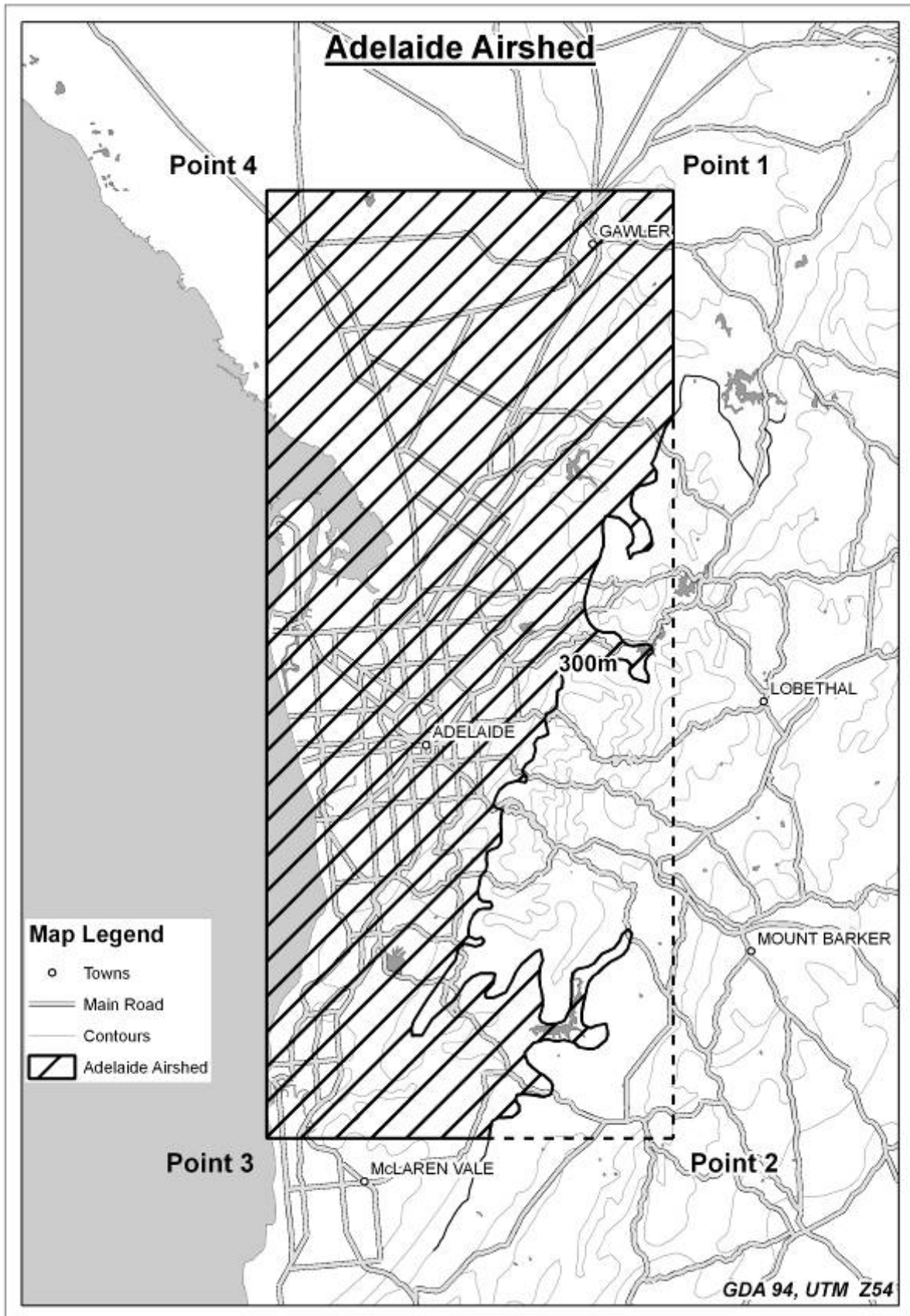
## Maps of REF zones

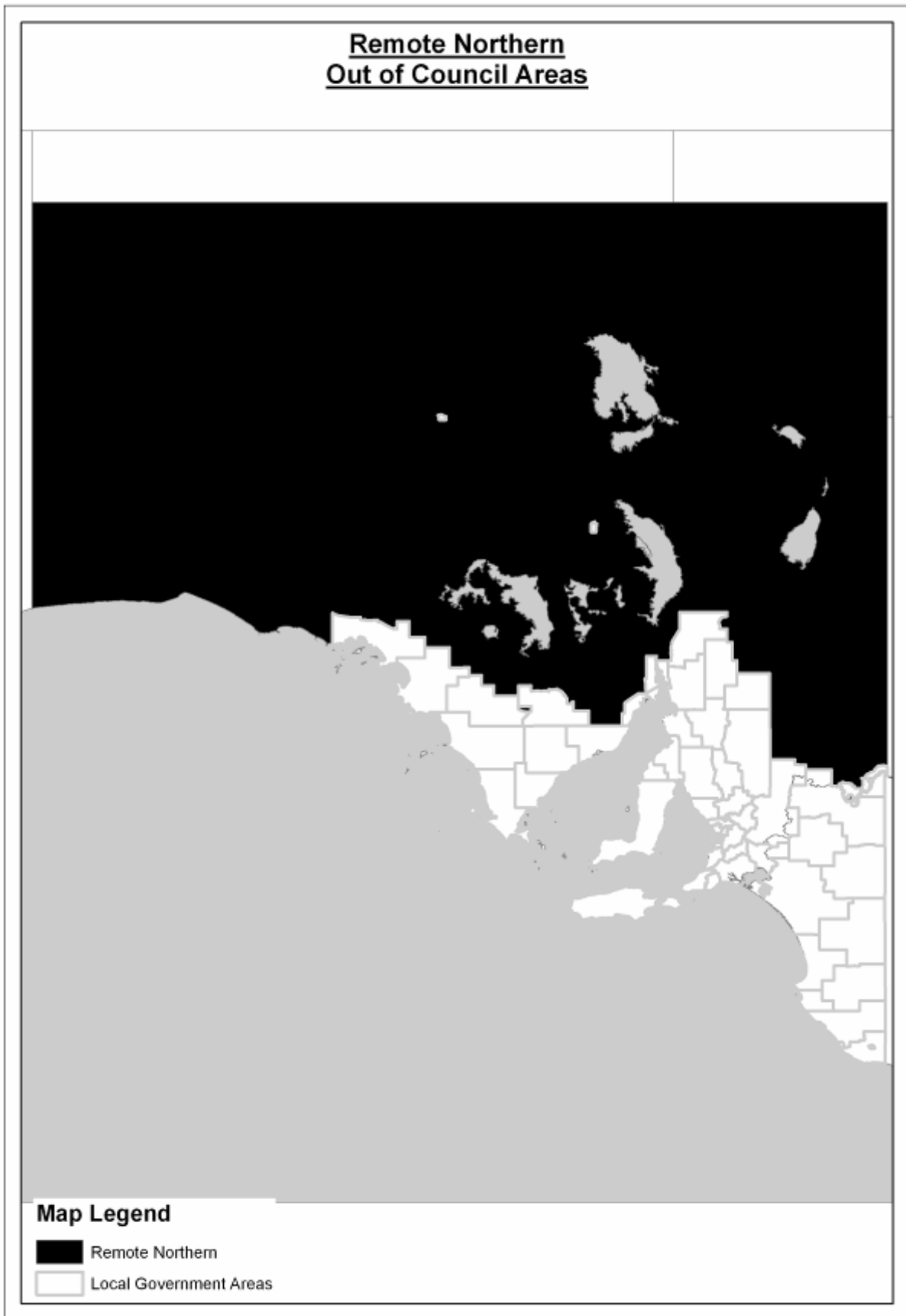
Issued March 2010

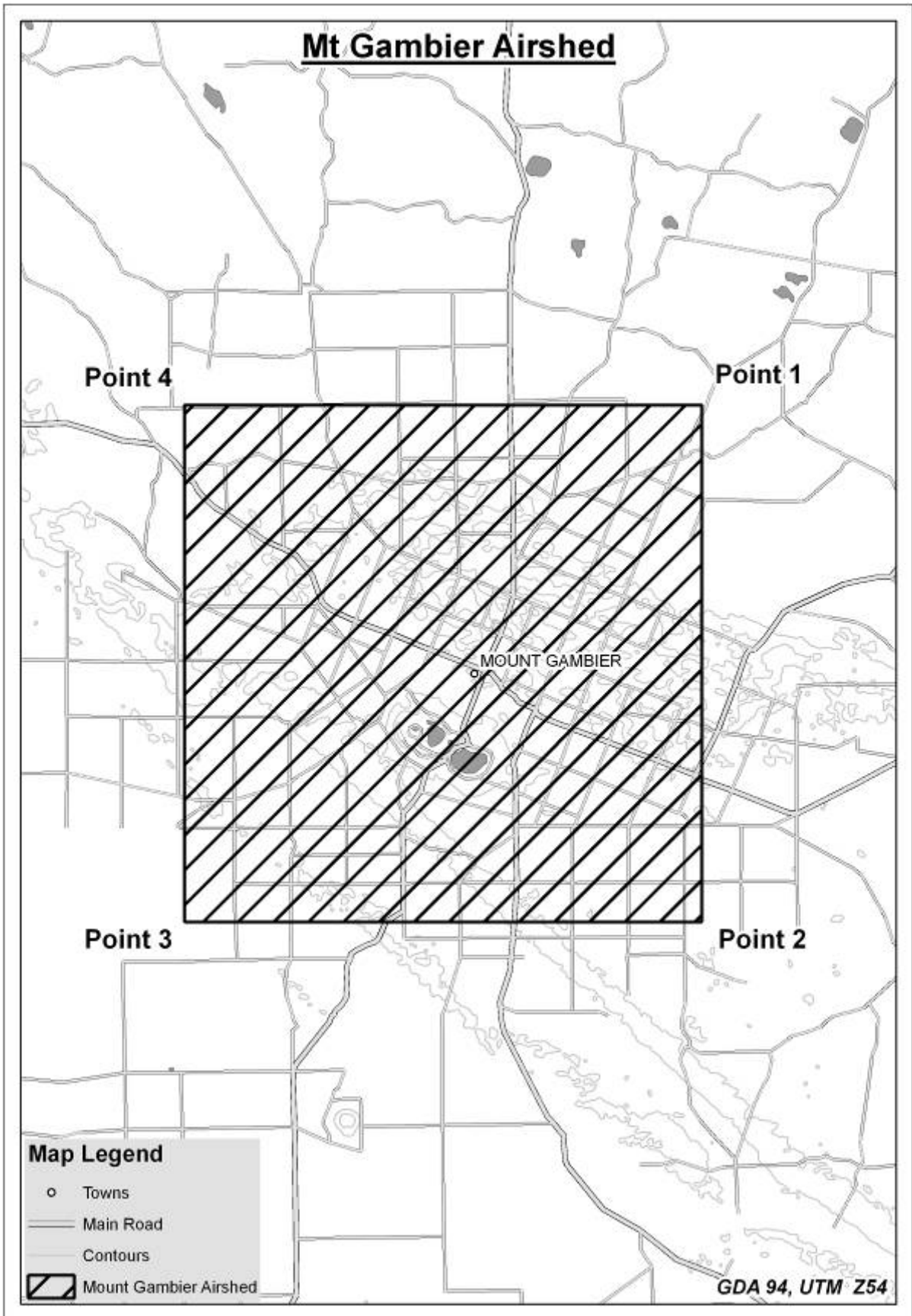
EPA 901/10: *The maps replace EPA guideline, EPA licence fee structure—fee schedules (726/09).*

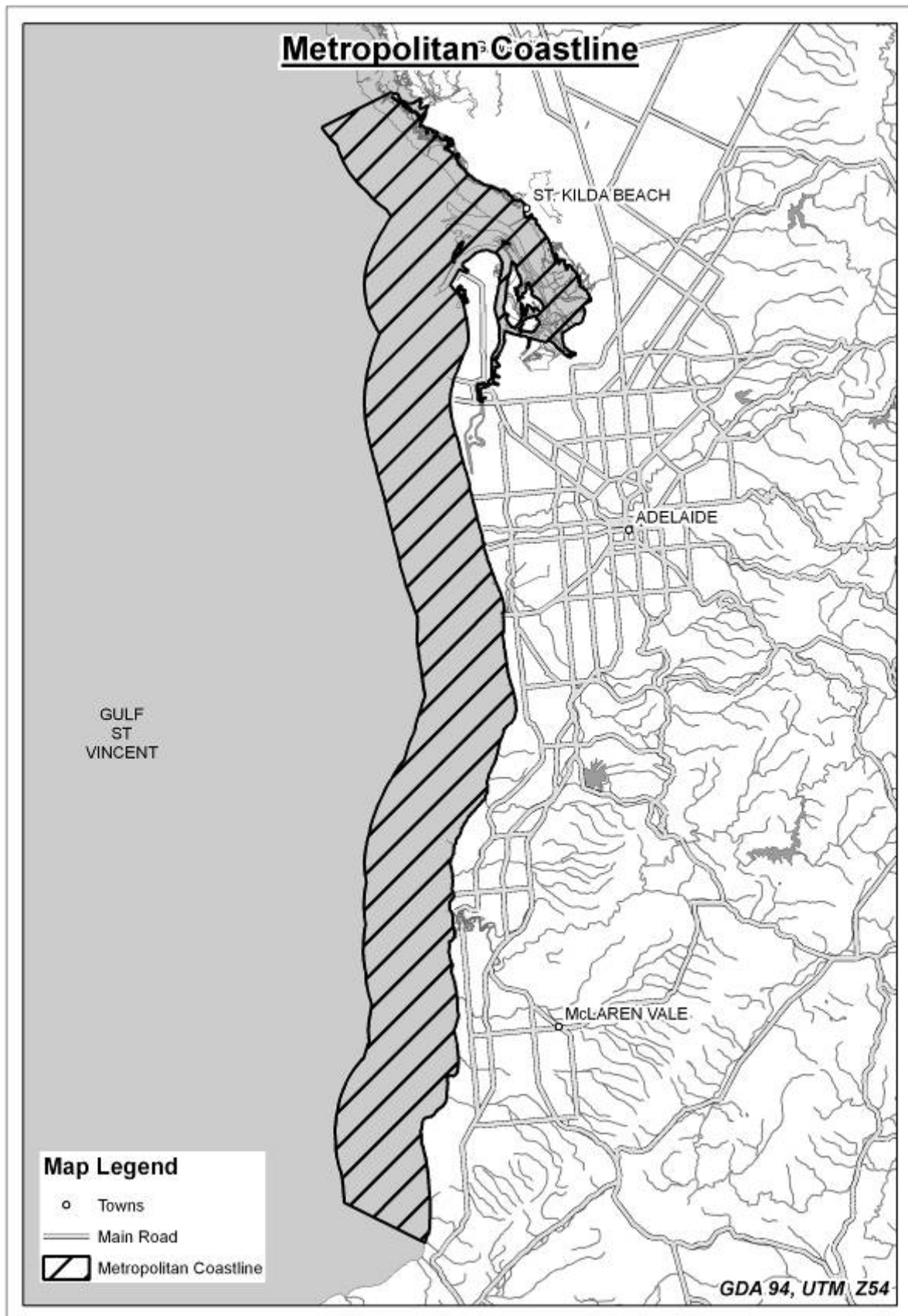


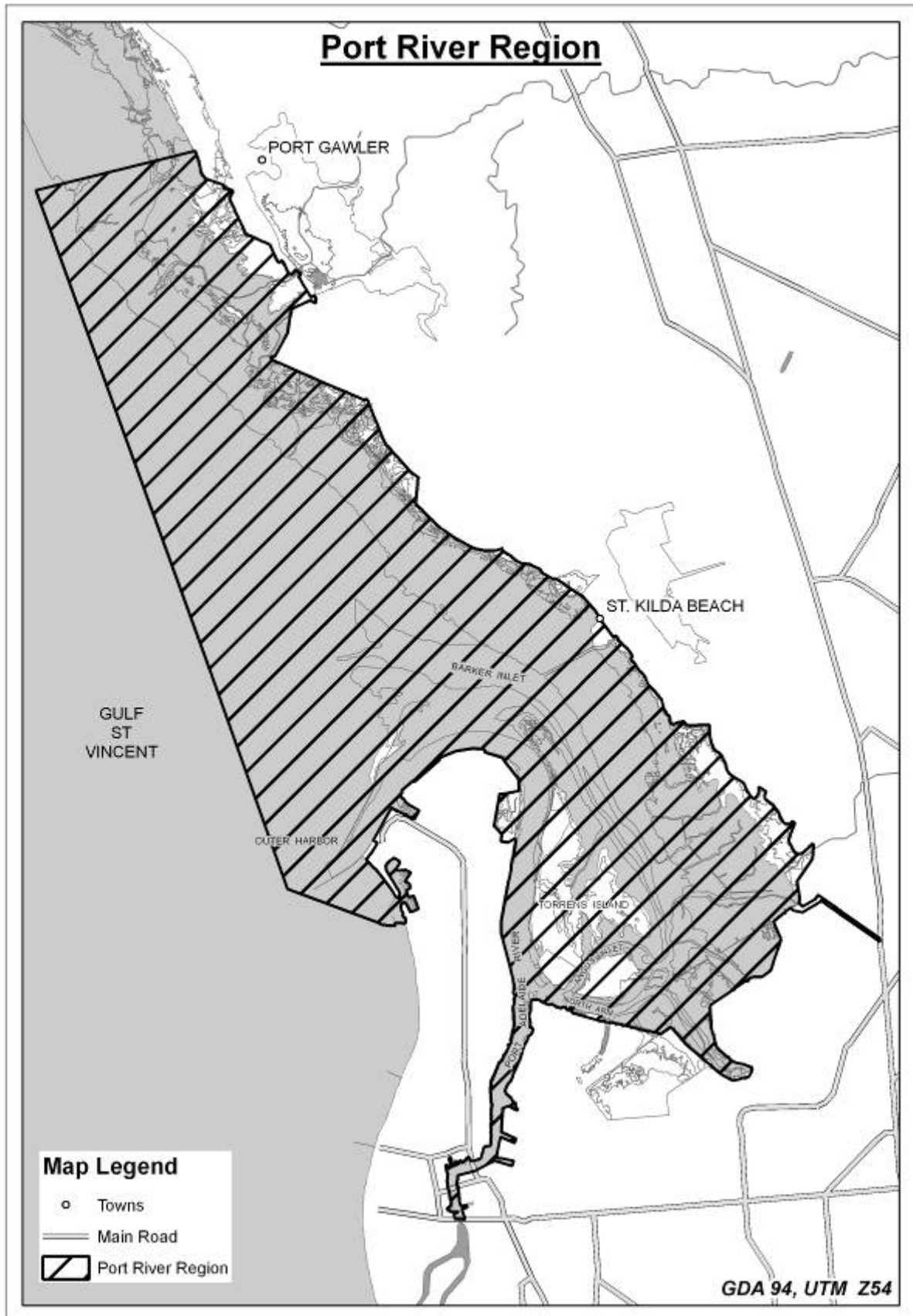


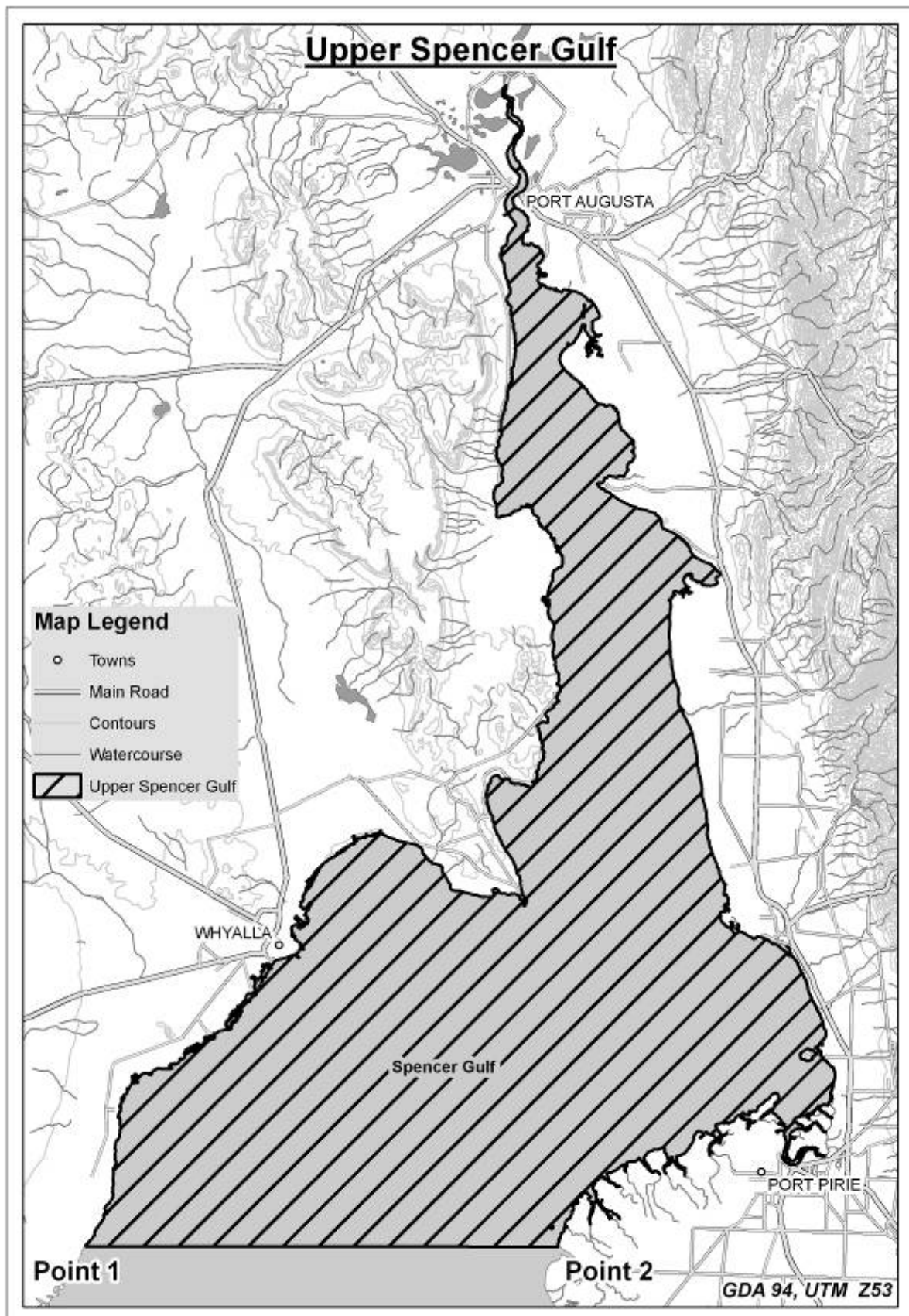




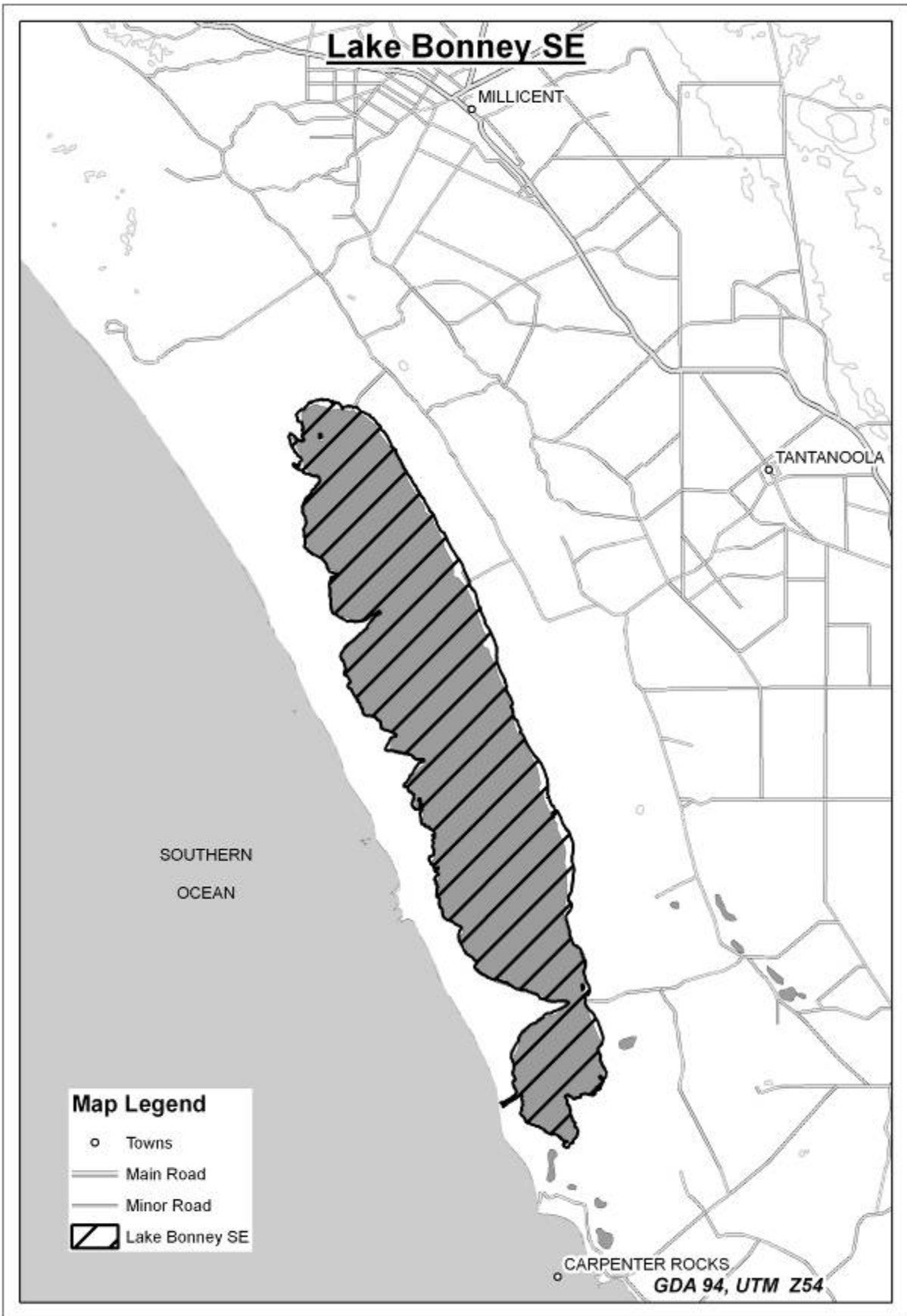












## Disclaimer

This publication is a guide only and does not necessarily provide adequate information in relation to every situation. This publication seeks to explain your possible obligations in a helpful and accessible way. In doing so, however, some detail may not be captured. It is important, therefore, that you seek information from the EPA itself regarding your possible obligations and, where appropriate, that you seek your own legal advice.

---

## Further information

### *Legislation*

Legislation may be viewed on <[www.legislation.sa.gov.au](http://www.legislation.sa.gov.au)>

Copies of legislation are available for purchase from:

Service SA Government Legislation Outlet  
Adelaide Service SA Centre  
108 North Terrace  
Adelaide SA 5000

Telephone: 13 23 24  
Fax: (08) 8204 1909  
Website: <[shop.service.sa.gov.au](http://shop.service.sa.gov.au)>

### *For general information please contact:*

Environment Protection Authority  
GPO Box 2607  
Adelaide SA 5001

Telephone: (08) 8204 2004  
Facsimile: (08) 8124 4670  
Freecall (country): 1800 623 445  
Website: <[www.epa.sa.gov.au](http://www.epa.sa.gov.au)>  
Email: <[epainfo@epa.sa.gov.au](mailto:epainfo@epa.sa.gov.au)>

---