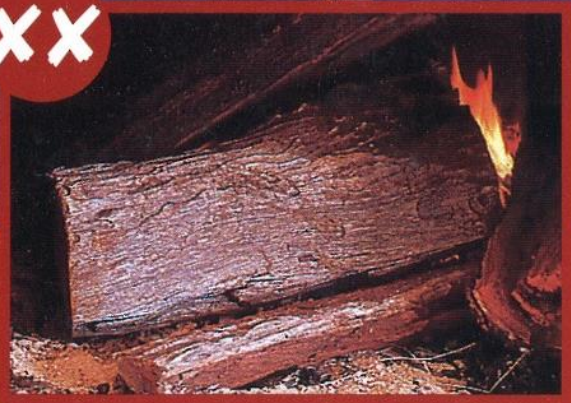


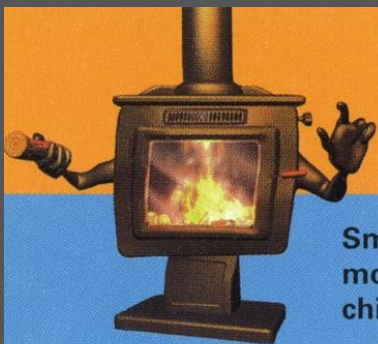


XX



✓





Check your chimney

Smoke from woodheaters and fireplaces is a major source of air pollution. Not only is excess smoke a sign you're wasting money, but particles in this smoke have been linked to heart and lung disease. Compare the smoke coming from your chimney with the photos on the front of this card. If your fire is too smoky, there are five things you can do:

1. Use dry, seasoned, untreated wood. The logs should make a 'crack' when struck together not a 'dull thud'
2. Stack wood under cover in a dry ventilated area
3. Use small logs and place them in your heater in a way that ensures air can circulate freely
4. Burn the fire brightly. Run the heater on a high burn rate (air control fully open) for 5 minutes before and 15 to 20 minutes after adding logs
5. Don't let your heater smoulder overnight – keep the air control open enough to maintain a flame. A well insulated house will stay warmer longer.

Other good wood heating practices:

- keep your heater and flue clean to ensure good air flow
- be aware of the source of your wood – firewood harvesting is destroying some of our most threatened remnant vegetation and animal habitats
- when buying a new wood heater, choose one certified to Australian Standard AS4013 with a low emission factor, and make sure it's the right size – a big heater burning slowly produces more smoke than a small heater burning fast
- if you use an open fireplace, only use it on special occasions – they are less efficient than woodheaters.

If you follow these guidelines you'll save money, help protect our environment and we'll all ***breathe the benefits.***

**For more information,
phone freecall 1800 065 823
or see our Internet site:
www.environment.gov.au/woodsmoke.html**



Natural Heritage Trust
Helping Communities Helping Australia