

ADELAIDE DESALINATION PROJECT



WATER QUALITY CHARACTERISATION STUDY

November 2011

Report prepared by



This publication may be cited as

Kildea, T.N. (2011) Adelaide Desalination Project: Water Quality Characterisation Study. November 2011. Australian Water Quality Centre, Adelaide. 16 pp.

Revision History

Date	Document status	Author	Reviewer
5/2/2012	Draft	TK	LA
28/2/2012	Submitted to AA	TK	

Disclaimer

The information and recommendations provided in this publication are based on the best available information at the time of writing. The author does not accept any liability for the contents of this document or any consequences arising from the use of the information contained within it. The views expressed by the author in this publication are not necessarily those of SA Water or the Australian Water Quality Centre.

© 2012 Australian Water Quality Centre

1 Introduction

The scope of this study is to characterise the ambient water quality in the Port Stanvac region, before the desalination plant becomes operational.

Specific aims for the study are:

1. To conduct monthly water column profiling 100 m, 500 m and 5 km north and south of the Adelaide Desalination Plant outfall, at a water depth of 5 m, 10 m, 15 m, 20 m and 25 m; and
2. To conduct monthly water column profiling of three offshore reference sites to determine natural changes in background concentrations in Gulf St Vincent.

The results presented in this report are from a water quality survey conducted on 15th November, 2011.

2 Results and Discussion

2.1 Salinity (Specific Conductivity and TDS)

TDS concentrations in the region surveyed, ranged between 36.2 g/L and 36.8 g/L (± 0.1 g/L).

On the seafloor, TDS concentrations were greater inshore than offshore, with a maximum concentration of 36.7 g/L observed north and south of Port Stanvac (Figure 1). The minimum concentration observed was 37.3 g/L, in the vicinity of the Adelaide Desalination Plant outfall.

Salinity concentrations were highly variable in the region with surface concentrations often lower than those observed on the seafloor. Salinity in the area may have been influenced by localised rainfall, with freshwater inputs from creeks and rivers lowering the salinity concentration at the surface (Figure 11).

2.2 Water temperature

Water temperature in the region ranged between 17.3 °C and 20.0 °C (± 0.15 °C).

Seawater temperature on the seafloor was generally cooler offshore when compared to inshore (Figure 2), with a temperature change of up 2.4 °C across the region. The maximum water temperature observed on the seafloor (15.3 °C) occurred around the Adelaide Desalination Plant outfall.

Surface waters were generally warmer than the water temperature close to the seafloor, by 0.2 to 1.6 °C (Figure 6). There was evidence of stratification occurring in the water column below 9 metres. It is not clear whether the stratified layer persisted across changes in the tidal cycle.

2.3 Dissolved Oxygen

Dissolved oxygen (DO) concentration in the region ranged between 7.7 mg/L and 8.3 mg/L (± 0.1 mg/L), which equates to an oxygen saturation of 101 %-112 % (Figure 4).

Oxygen concentrations are generally greater on the surface than on the seafloor, due to surface disturbance (wind and waves) oxygenating the water (Figure 7).

2.4 Chlorophyll

Chlorophyll concentrations in the region were generally less than 1 $\mu\text{g/L}$ (sensor sensitivity is ± 1 $\mu\text{g/L}$).

There is a general trend of higher chlorophyll concentrations south of the outfall location compared to the north (Figure 5).

Water samples were collected and analysed by AWQC laboratories to provide a mechanism to verify chlorophyll *a* concentrations measured using the YSI sonde (6600 series V4), as there is not a set standard to calibrate the instrument. The samples were collected one metre below the surface, at sites where water depth was 15 m. The average chlorophyll *a* concentration was 0.3 $\mu\text{g/L}$ and ranged between 0.2-0.5 $\mu\text{g/L}$ (± 0.1 $\mu\text{g/L}$; Table 1). Laboratory concentrations were generally lower than those measured by the sonde.

Table 1 Chlorophyll *a* concentrations at 15 m sites along the coast. Seawater samples were collected one metre below the surface and analysed by AWQC laboratories.

Direction	Distance from ADP Diffuser (metres)	Chlorophyll a ($\mu\text{g/L}$)
North	5000	0.2
North	500	0.2
North	100	0.2
South	100	0.2
South	500	0.2
South	5000	0.5

2.5 Turbidity

Turbidity in the water column was less than 2 NTU, throughout the region.

The sensor's accuracy is ± 2 NTU, therefore when turbidity concentrations are less than 2 NTU the sensor may provide a reading that falls between -2 and 2 NTU. This was observed at all sites (Figure 8).

2.6 pH

Average pH in the water column was 8.2 (± 0.2 pH unit). Seawater is highly buffered due to high concentrations of bicarbonate ions in solution and as a consequence pH remains constant (Figure 9).

3 Appendix A – Spatial Plots

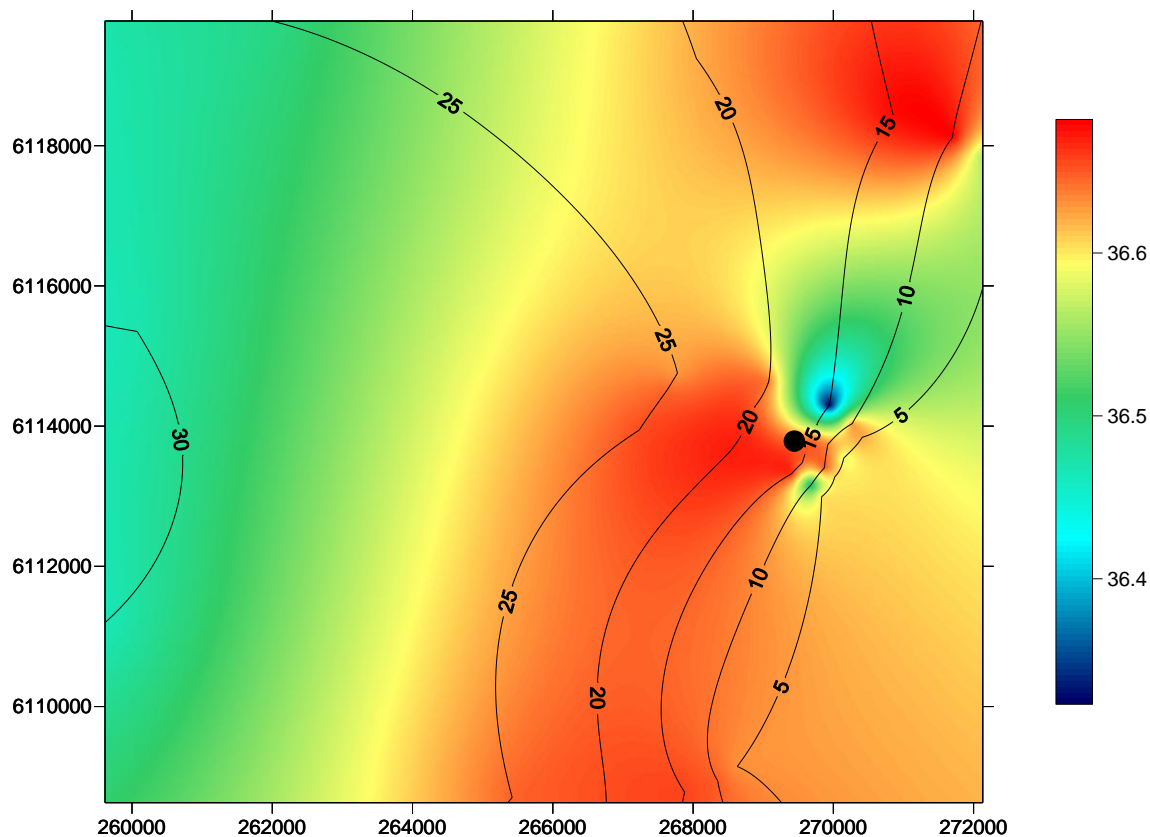


Figure 1 Spatial change in TDS (g/L) concentration, on the seafloor, in the Port Stanvac region. The coloured scale bar represents changes in TDS concentration between 36.3 g/L and 36.7 g/L (± 0.1 g/L). Contour lines denote a five metre change in depth. The bottom scale bar represents distance in metres across the region. X coordinates refer to eastings and Y coordinates refer to northings measured in metres. Black dot represents position of ADP outfall.

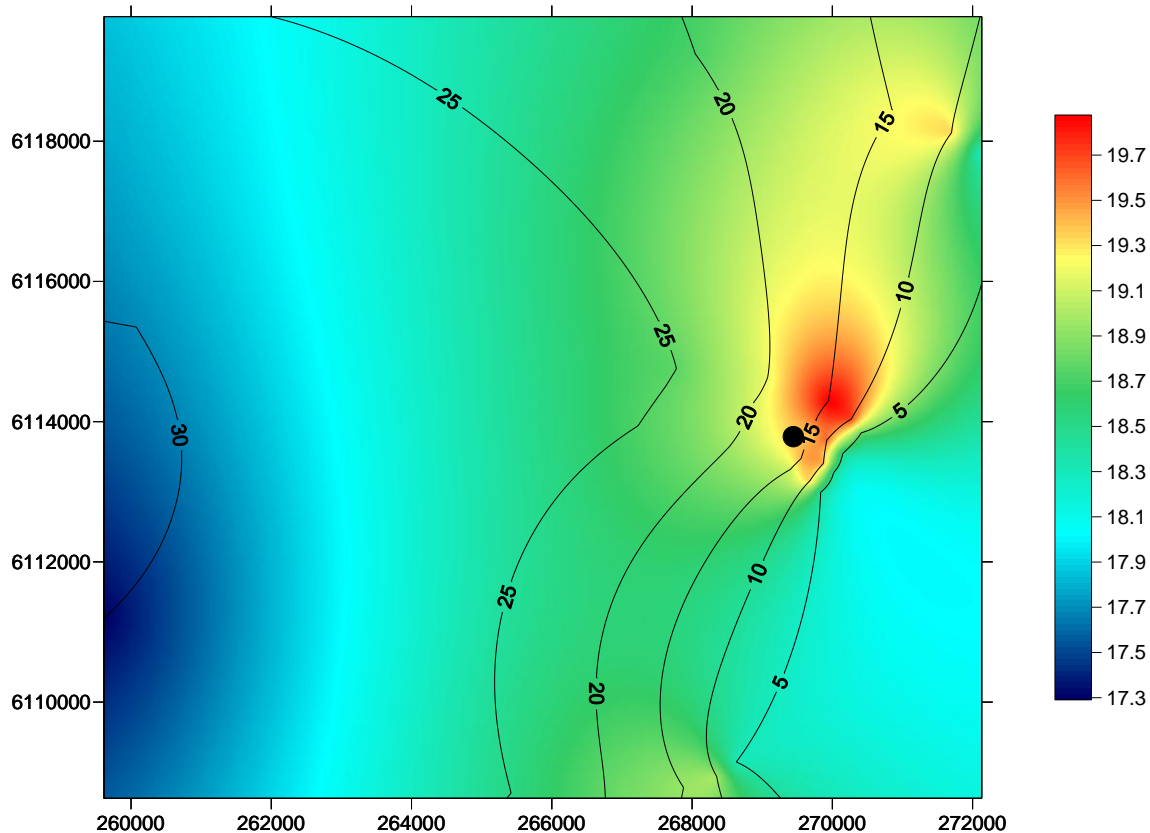


Figure 2 Spatial change in water temperature, on the seafloor, in the Port Stanvac region. The coloured scale bar represents temperature changes between 17.3 °C and 19.7°C ($\pm 0.15^\circ\text{C}$). Contour lines denote a five metre change in depth. The bottom scale bar represents distance in metres across the region. X coordinates refer to eastings and Y coordinates refer to northings measured in metres. Black dot represents position of ADP outfall.

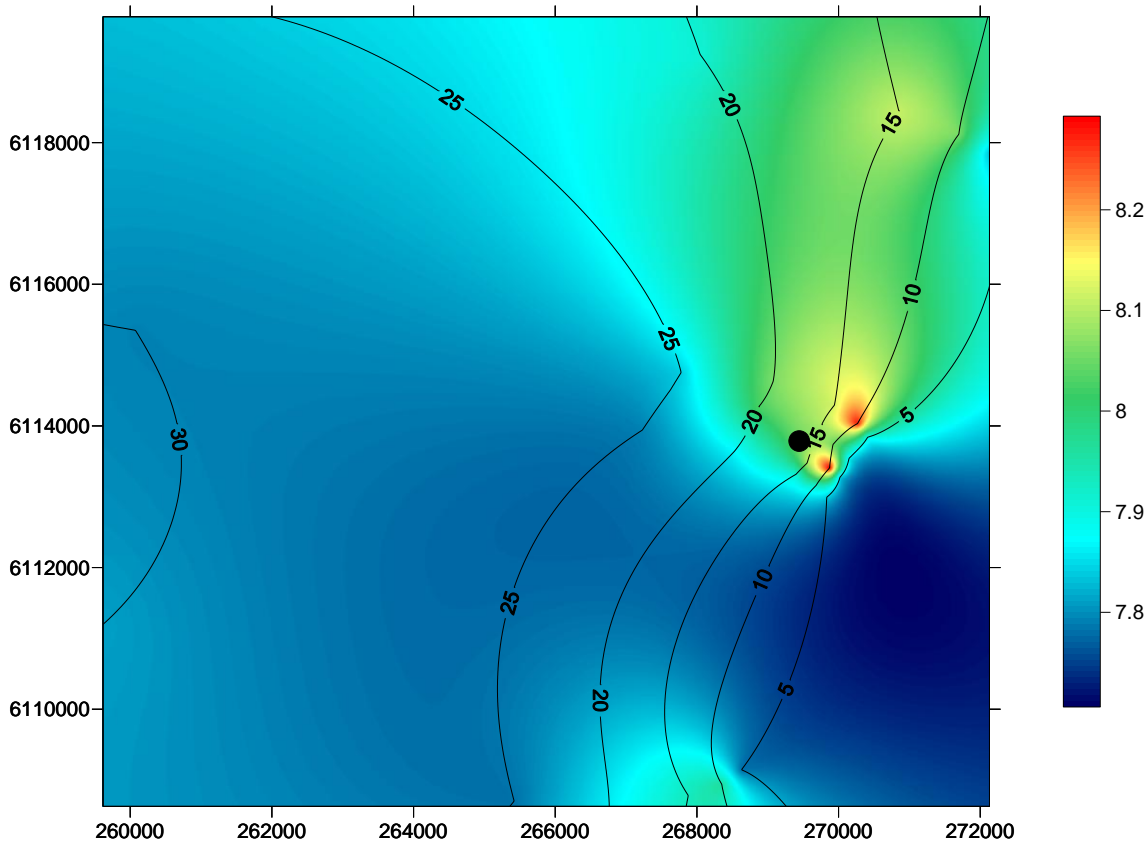


Figure 3 Spatial change in dissolved oxygen concentration, on the seafloor, in the Port Stanvac region. The coloured scale bar represents a change in the dissolved oxygen concentration between 7.8 mg/L and 8.3 mg/L (± 0.1 mg/L). Contour lines denote a five metre change in depth. The bottom scale bar represents distance in metres across the region. X coordinates refer to eastings and Y coordinates refer to northings measured in metres. Black dot represents position of ADP outfall.

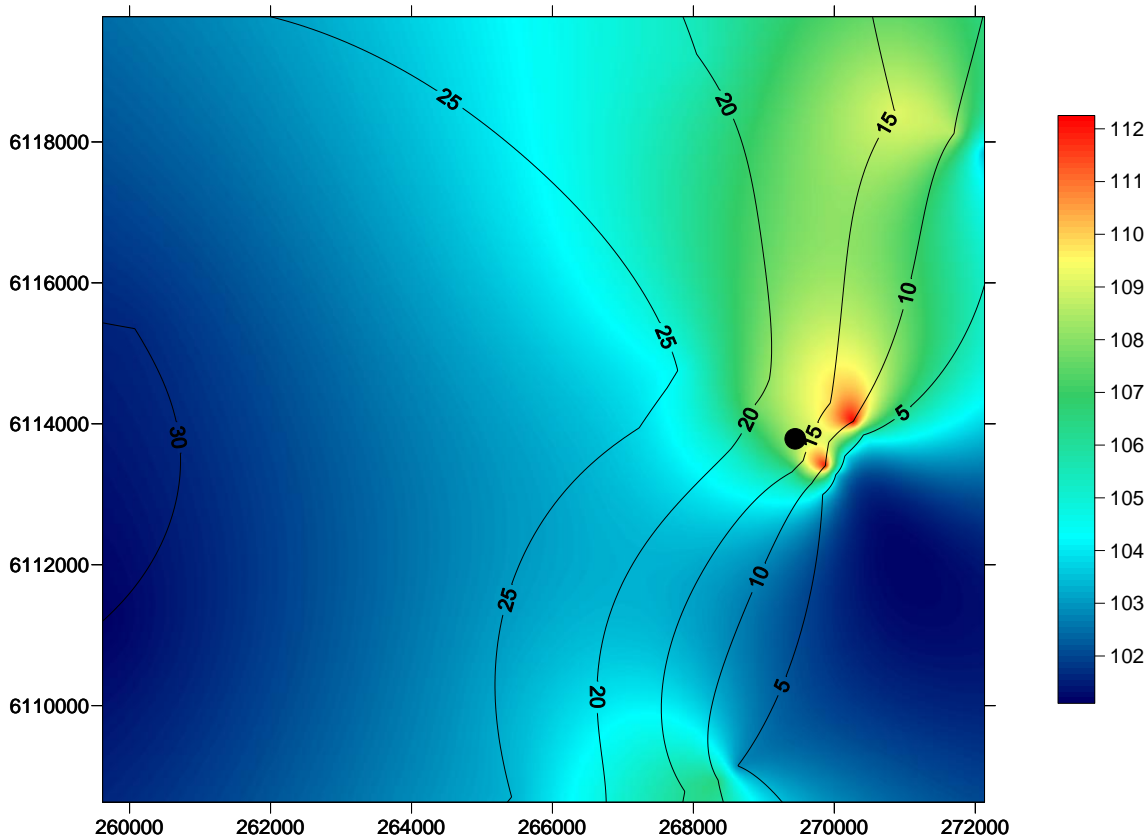


Figure 4 Spatial change in dissolved oxygen concentration (expressed as percentage saturation), on the seafloor, in the Port Stanvac region. The coloured scale bar represents a change in the dissolved oxygen concentration between 101 % and 112 %. Contour lines denote a five metre change in depth. The bottom scale bar represents distance in metres across the region. X coordinates refer to eastings and Y coordinates refer to northings measured in metres. Black dot represents position of ADP outfall.

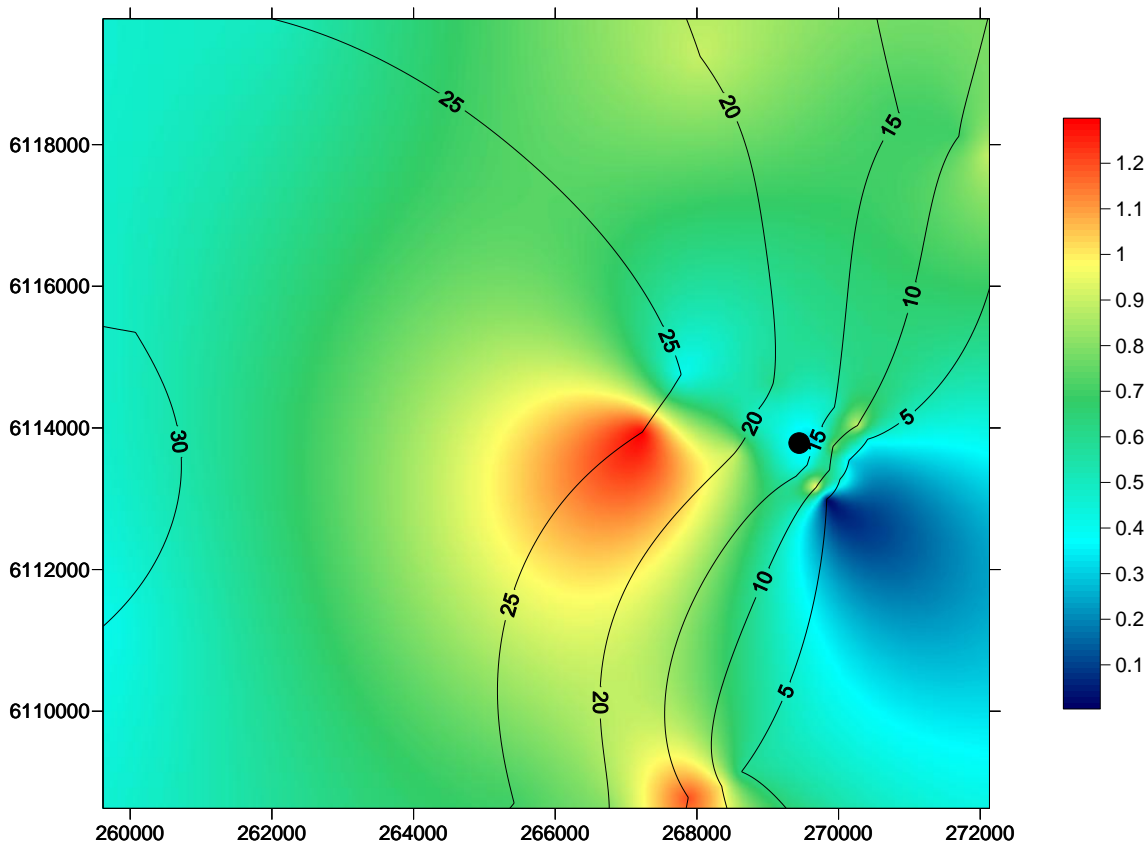


Figure 5 Spatial change in chlorophyll a concentration, one metre below the surface, in the Port Stanvac region. The coloured scale bar represents a change in chlorophyll concentration between 0 µg/L and 1.2 µg/L. Note sensor sensitivity is ± 1 µg/L. Contour lines denote a five metre change in depth. The bottom scale bar represents distance in metres across the region. X coordinates refer to eastings and Y coordinates refer to northings measured in metres. Black dot represents position of ADP outfall.

4 Appendix B - Vertical profiles

The following graphs illustrate specific conductivity ($\mu\text{S}/\text{cm}$), total dissolved solids (g/L) temperature (degrees Celsius), dissolved oxygen (mg/L), turbidity (NTU) and pH, relative to depth for May 2011. Water column profiles were undertaken 5km, 500m and 100m north and south of the outfall diffusers at water depths of 5m, 10m, 15m, 20m and 25m. Water column profiles were also undertaken at three control sites, approximately 10 km offshore adjacent to Hallett Cove, Port Stanvac and Noarlunga. The legend below applies to all graphs.

Dotted lines represent water quality profiles conducted south and solid lines are sites north of the diffuser location. Orange represents 100 m, blue 500 m and green 5 km either north or south of the diffuser. Water quality profiles were conducted at a depth of 5 m, 10 m, 20 m and 25 m. There were no 25 m profiles undertaken north of the diffuser due to insufficient water depth. Control sites were located approximately 10 km offshore, adjacent to Hallett Cove (blue), Port Stanvac (orange) and Noarlunga (green).

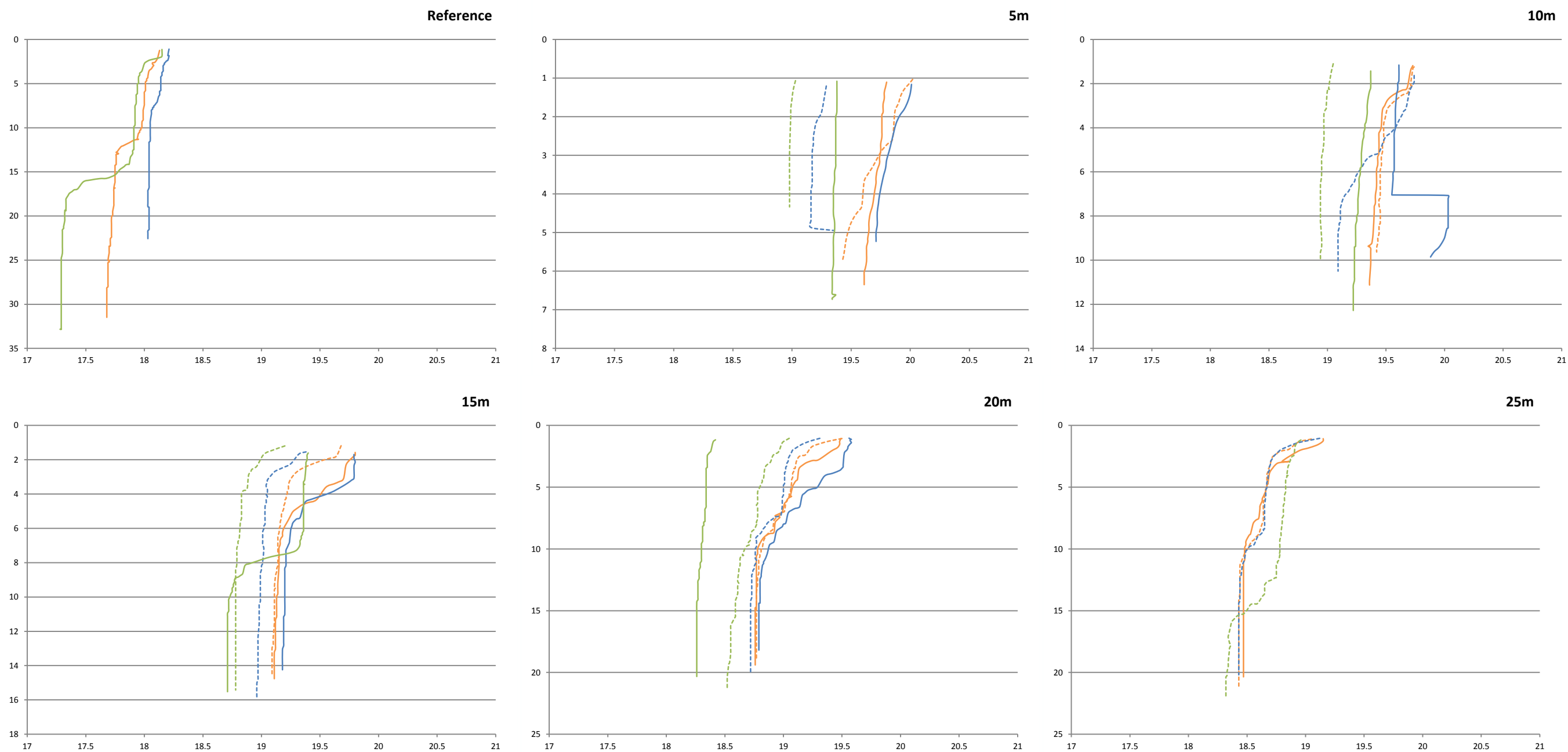


Figure 6 Change in water temperature (x axis; degrees Celsius) at different depths (y axis; metres) throughout the water column. Water quality profiles were conducted at a depth of 5 m, 10 m, 15 m, 20 m, 25 m and 10 km offshore (Reference sites); north (solid lines) and south (broken line) of the ADP diffuser. Orange represents 100 m, blue 500 m and green 5 km either north or south of the diffuser.

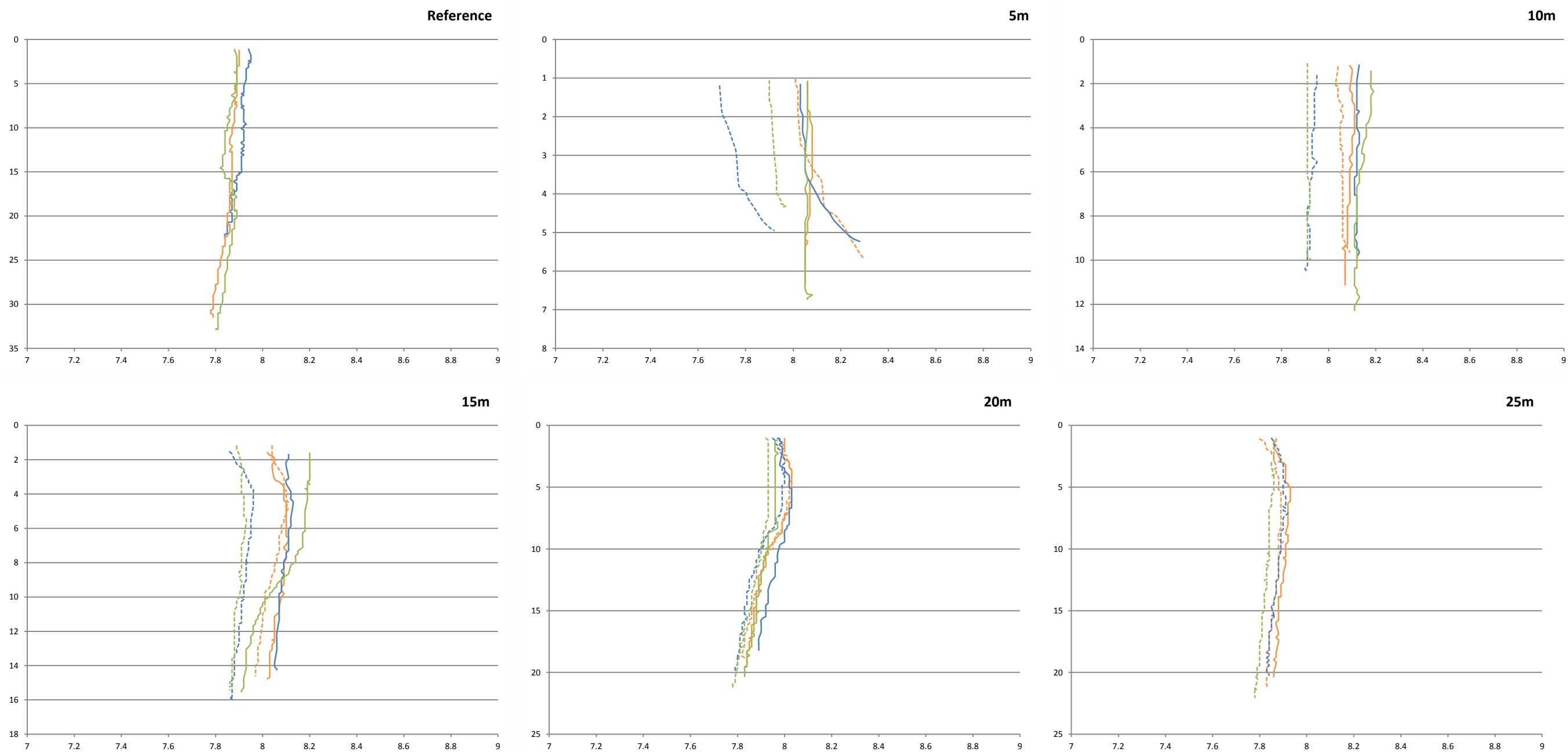


Figure 7 Change in dissolved oxygen (x axis; mg/L) at different depths (y axis; metres) throughout the water column. Water quality profiles were conducted at a depth of 5 m, 10 m, 15m, 20 m, 25 m and 10 km offshore (Reference sites); north (solid lines) and south (broken line) of the ADP diffuser. Orange represents 100 m, blue 500 m and green 5 km either north or south of the diffuser.

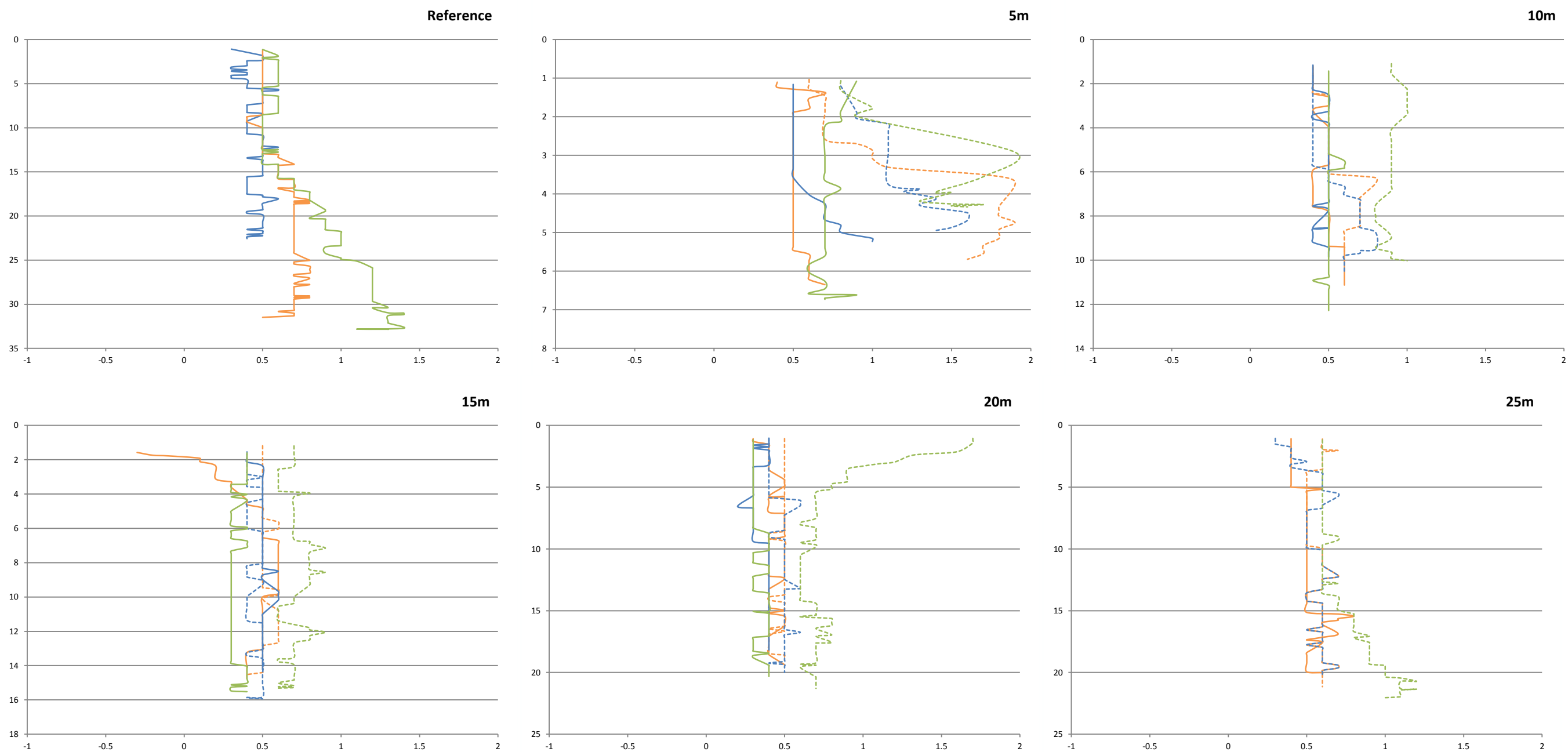


Figure 8 Change in turbidity (x axis; NTU) at different depths (y axis; metres) throughout the water column. Water quality profiles were conducted at a depth of 5 m, 10 m, 15m, 20 m, 25 m and 10 km offshore (Reference sites); north (solid lines) and south (broken line) of the ADP diffuser. Orange represents 100 m, blue 500 m and green 5 km either north or south of the diffuser.

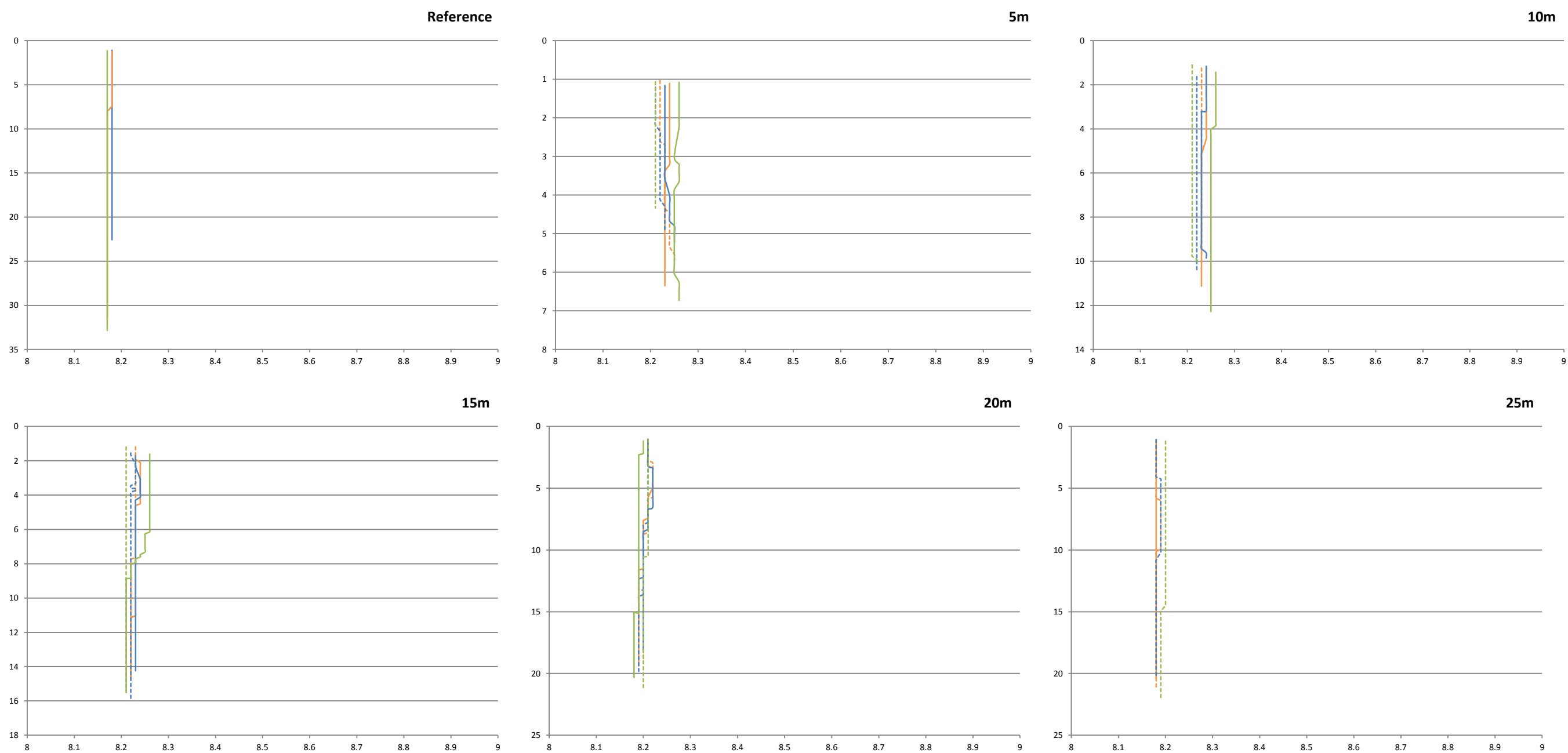


Figure 9 Change in pH (x axis; pH units) at different depths (y axis; metres) throughout the water column. Water quality profiles were conducted at a depth of 5 m, 10 m, 15m, 20 m, 25 m and 10 km offshore (Reference sites); north (solid lines) and south (broken line) of the ADP diffuser. Orange represents 100 m, blue 500 m and green 5 km either north or south of the diffuser.

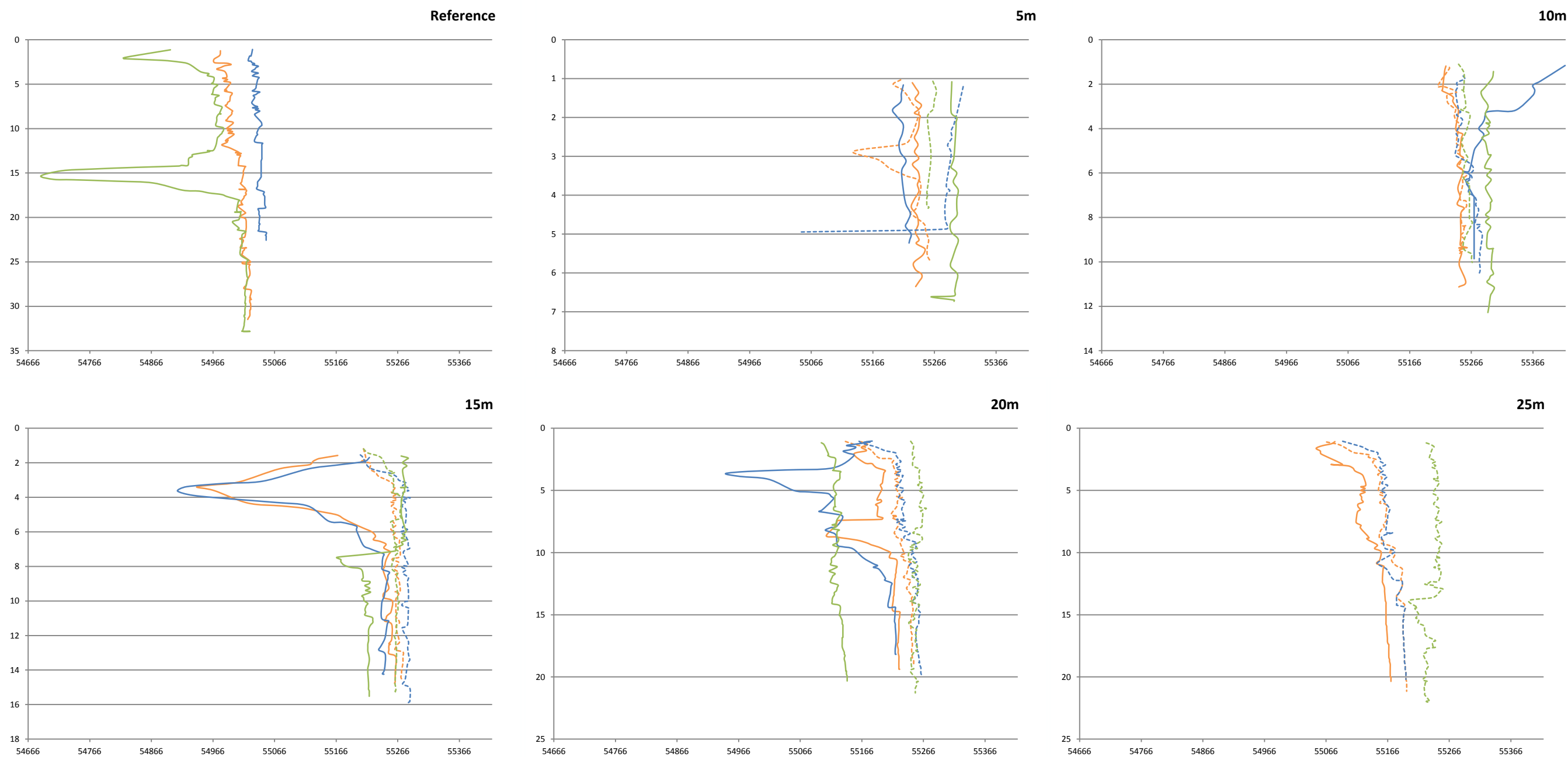


Figure 10 Change in specific conductivity (x axis; $\mu\text{S}/\text{cm}$) at different depths (y axis; metres) throughout the water column. Water quality profiles were conducted at a depth of 5 m, 10 m, 15m, 20 m, 25 m and 10 km offshore (Reference sites); north (solid lines) and south (broken line) of the ADP diffuser. Orange represents 100 m, blue 500 m and green 5 km either north or south of the diffuser.

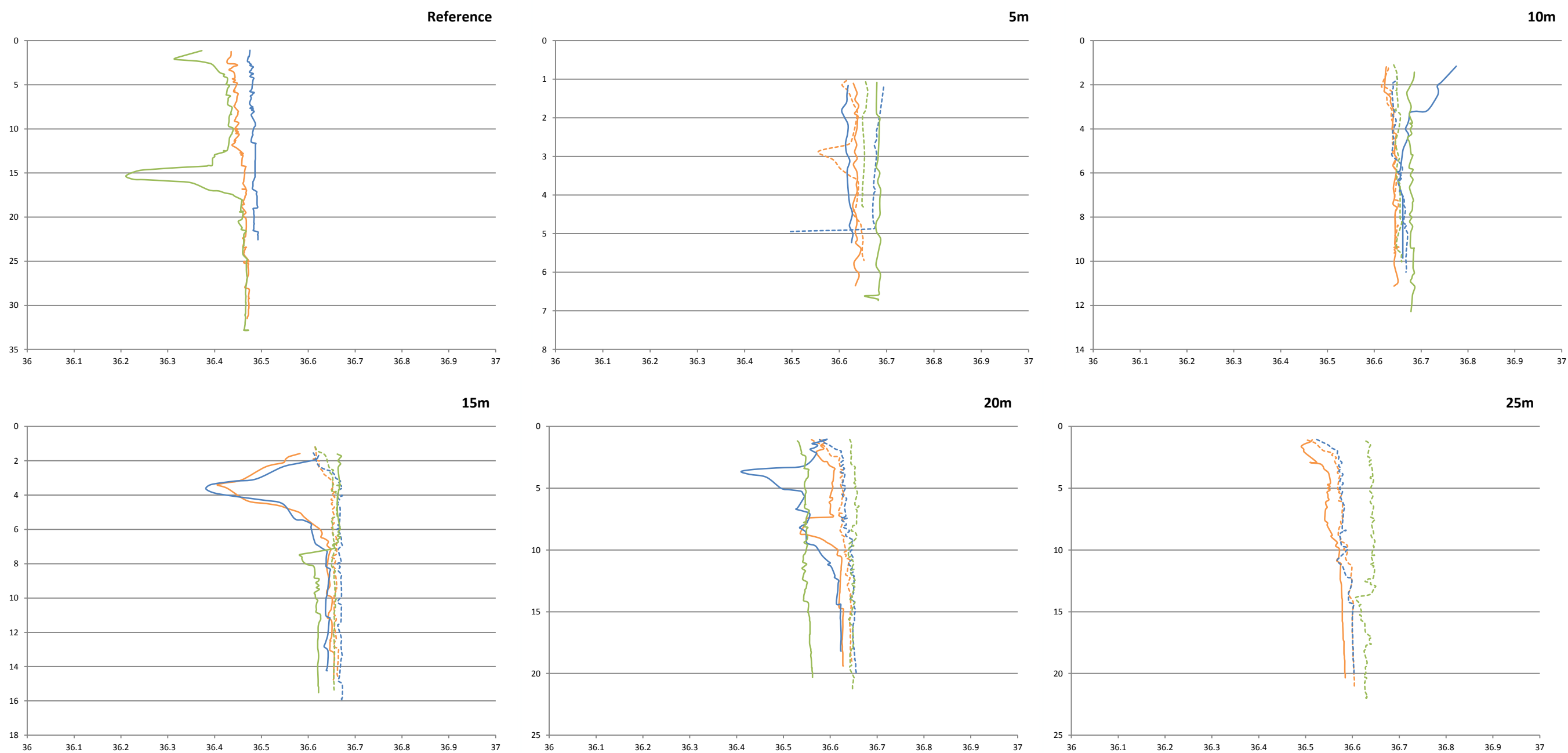


Figure 11 Change in total dissolved solids (x axis; g/L) at different depths (y axis; metres) throughout the water column. Water quality profiles were conducted at a depth of 5 m, 10 m, 15m, 20 m, 25 m and 10 km offshore (Reference sites); north (solid lines) and south (broken line) of the ADP diffuser. Orange represents 100 m, blue 500 m and green 5 km either north or south of the diffuser.