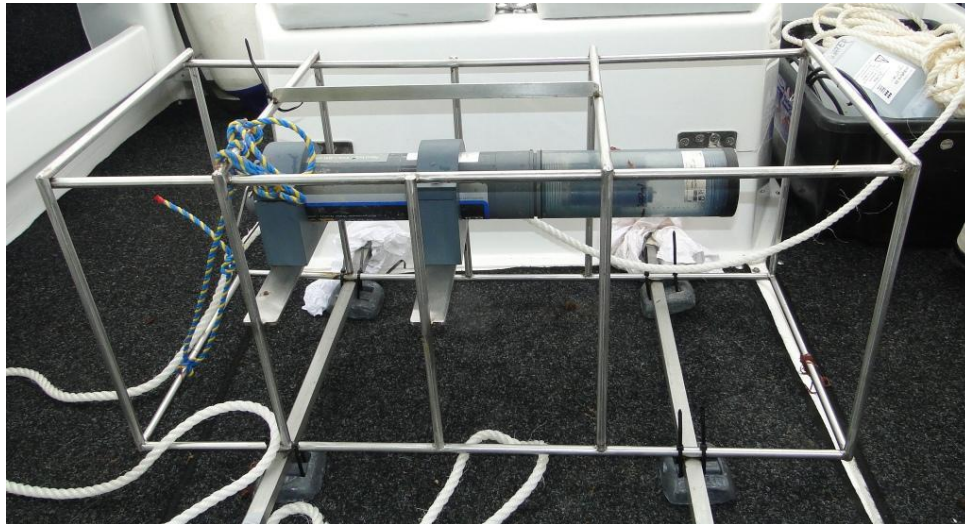


# ADELAIDE DESALINATION PROJECT

---



Salinity, pH and dissolved oxygen water quality data  
from the  
ADP marine exclusion zone  
September/October 2013

Report prepared by



This publication may be cited as

Andreacchio L. and Kildea, T.N. (2013) Adelaide Desalination Project: Salinity, pH and dissolved oxygen water quality data from the marine exclusion zone. September/October 2013. Australian Water Quality Centre, Adelaide. 10 pp.

#### Revision History

Date	Document status	Author	Reviewer
23/10/2013	Draft	LA	
30/10/2013	Internal review		TK
12/11/2013	Submitted to AA		

#### Disclaimer

The information and recommendations provided in this publication are based on the best available information at the time of writing. The author does not accept any liability for the contents of this document or any consequences arising from the use of the information contained within it. The views expressed by the author in this publication are not necessarily those of SA Water or the Australian Water Quality Centre.

© 2013 Australian Water Quality Centre

## 1 Introduction

In December 2007, the South Australian Government announced the proposal to construct a reverse osmosis seawater desalination plant at Port Stanvac. The Adelaide Desalination Project was initiated to provide metropolitan Adelaide with a sustainable and secure supply of drinking water. The project aims to deliver a climate independent water source that will supplement and secure the metropolitan area's water supply and reduce the reliance on traditional water sources, such as the River Murray.

A multi-national consortium, AdelaideAqua, comprising McConnell Dowell Constructors, Abigroup Contractors, ACCIONA Agua, and Trility, were awarded the contract to design, build, operate and maintain the plant for 20 years. As of December 2012, the plant has become fully operational producing drinking water which is used by SA Water to supply metropolitan Adelaide.

Port Stanvac was selected as the preferred site for the Adelaide Desalination Plant (ADP) due to accessibility of relatively deep seawater, good oceanographic dispersion characteristics, its proximity to the water supply network, suitable land availability and lower construction costs.

The initial development phase of the Adelaide Desalination Project identified a number of important environmental issues to take into consideration when operating the plant (EIS 2008), in particular minimising the impact of discharging saline concentrate into the sea.

Concerns were raised by the public, in the initial development of the project, in regards to the potential reduction of dissolved oxygen at the seabed due to the discharge of saline concentrate into the region (EIS Response Document 2009). The risk of depleting oxygen on the seabed was considered low but to provide assurance that dissolved oxygen (DO) concentrations in the region were remaining above 6 mg/L (EPA Water Quality criteria for the protection of marine ecosystems), it was proposed that *in situ* measurements of DO concentrations should be incorporated into the monitoring program.

The EPA Licence (26902) granted to Adelaide Aqua to operate the desalination plant stipulates that DO and pH must be monitored twice per month for at least 24 hours under a variety of different operational modes and receiving environment conditions.

The scope of this study is to characterise ambient DO and pH concentrations on the seafloor, approximately 100 metres from the ADP diffuser, for periods greater than 24 hours under different plant operational modes and receiving environment conditions.

## 2 Methods

### 2.1 *In situ* water quality assessment

*In situ* water quality is assessed using a YSI 6600 series V4 sonde (instrument specifications provided in Table 1), that measures a variety of different parameters. The parameters measured include:

- Conductivity ( $\mu\text{S}/\text{cm}$ );
- Specific conductivity ( $\mu\text{S}/\text{cm}$ );
- Dissolved Oxygen ( $\text{mg}/\text{L}$ );
- pH;
- Turbidity (NTU); and
- Water temperature (degrees Celsius)

The sonde is fixed within a stainless steel cage (see cover photo) and lowered to the seafloor, approximately 100 metres south of the ADP diffuser. Water quality data are logged and stored every ten minutes, which includes the instruments depth (metres). The depth data provides information on tidal movement during day, as the instrument is fixed 0.50 m above the seafloor, thus any change in depth is directly related to either tidal or swell patterns during the day.

### 2.2 Salinity Computation

The AWQC has undertaken significant work in calculating total dissolved solids (TDS) from specific conductivity measurements, to provide a measure of the concentration of salt in solution ( $\text{g}/\text{L}$ ). Through the analyses of hundreds of water samples across South Australia, a relationship between electrical conductivity (EC) and salinity (TDS) has been derived (Equation 1).

#### *Calculation of Total Dissolved Solids*

TDS is a measure of the combined content of all inorganic and organic substances contained in seawater, of which salt is the dominant constituent. Total dissolved solids concentration ( $\text{g}/\text{L}$ ) is calculated from specific conductivity using the empirically formula:

$$\text{TDS} = ((0.548 \times \text{EC}) + (2.2 \times 10^{-6} \times \text{EC}^2) - (2.06 \times 10^{-12} \times \text{EC}^3))/1000 \quad [\text{Equation 1}]$$

Where:

TDS is Total Dissolved Solids ( $\text{g}/\text{L}$ )

EC is specific conductivity ( $\mu\text{S}/\text{cm}$ ) normalised to  $25^\circ\text{C}$  (based on 2% per degree difference from  $25^\circ\text{C}$ ).

### Conversion of TDS from g/L to ppt

TDS is expressed as parts per thousand (ppt) by multiplying by 1.026. This assumes an average seawater density of 1.026 g/ml based on a salinity of 37 psu and a water temperature of 20 °C at a depth of 15 metres.

## 2.3 Instrument Specifications

Table 1. YSI 6600 series V4 sonde specifications detailing range, accuracy and resolution

Parameter	Sensor Type	Range	Accuracy	Resolution
<b>Specific Conductivity</b>	4 electrode cell with autoranging	0-100 mS/cm	+/- 0.5% of reading + 0.001 mS/cm	0.001 mS/cm to 0.1 mS/cm (range dependent)
<b>Water temperature</b>	Thermistor	-5 to 45 °C	+/- 0.15 °C	0.01 °C
<b>Dissolved Oxygen</b>	Optical, Luminescence lifetime	0-50 mg/L	+/- 1% of reading or 0.1 mg/L (whichever is greater)	0.01 mg/L
<b>pH</b>	Glass combination electrode	0-14 units	+/- 0.2	0.01 units
<b>Turbidity</b>	Optical, 90° scatter, with mechanical cleaning	0-1000 NTU	+/- 5% of reading or 2 NTU (whichever is greater), relative to calibration standards	0.1 NTU

## 2.4 Quality Control/Assurance

Individual sensors are calibrated before each sampling trip, using procedures outlined in the YSI technical manual. Conductivity and pH standards are prepared by AWQC's Analytical Quality Control Laboratory to ISO 9001 requirements. Turbidity is calibrated using a standard solution (ACR Standard Turbidity Solution 4000 NTU) diluted to 40 NTU.

## 2.5 Data analysis

The data are presented in a graphical format comparing changes in salinity to tidal variation and changes in pH (pH units), DO (% saturation) and water temperature (°C) with tidal variation (m).

The water quality data are summarised for each sampling period as:

- Maximum and minimum average daily range
- Maximum daily variation
- Average daily variation

## 3 Results

### 3.1 Plant operations

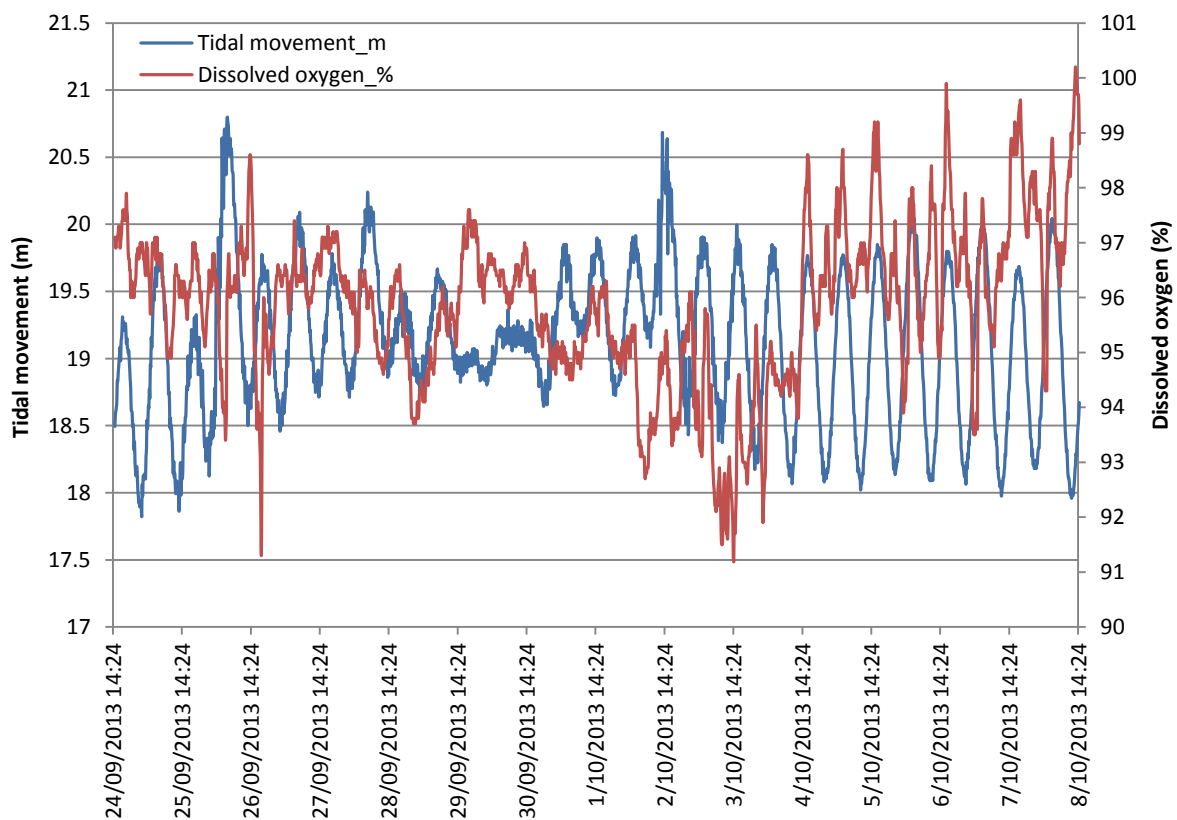
During the sonde deployment period the Adelaide Desalination Plant was in operation from the 24<sup>th</sup> September to the 8<sup>th</sup> October, mean daily production of permeate during this period was 175 MLD. The ADP discharged saline concentrate to the marine environment from the 24<sup>th</sup> September to the 8<sup>th</sup> October, which had a salinity concentration of approximately 71 ppt. Approximate daily discharge volumes of saline concentrate during the sonde deployment ranged from minimum 94 MLD (3<sup>rd</sup> October) to a maximum of 223 MLD (5<sup>th</sup> October).

### 3.2 Salinity

Data were not recorded for salinity concentrations due to technical issues with the salinity sensor.

### 3.3 Dissolved oxygen

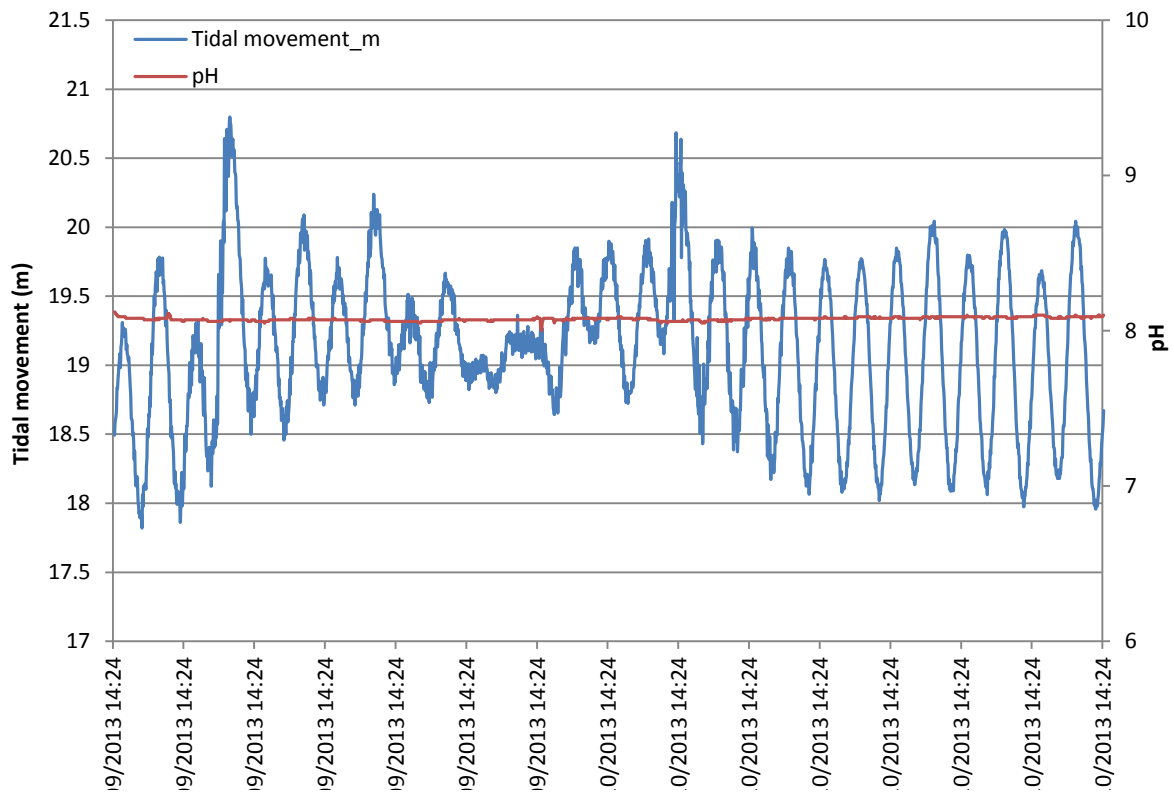
The daily average oxygen concentration ranged between 93.4 % to 97.6 %. Maximum daily variation was 7.3 % (26<sup>th</sup> September). Average daily variation was 4.0 %.



**Figure 1.** Changes in dissolved oxygen (%) with tidal movement (m) over fifteen days, from 24<sup>th</sup> September to 8<sup>th</sup> October 2013.

### 3.4 pH

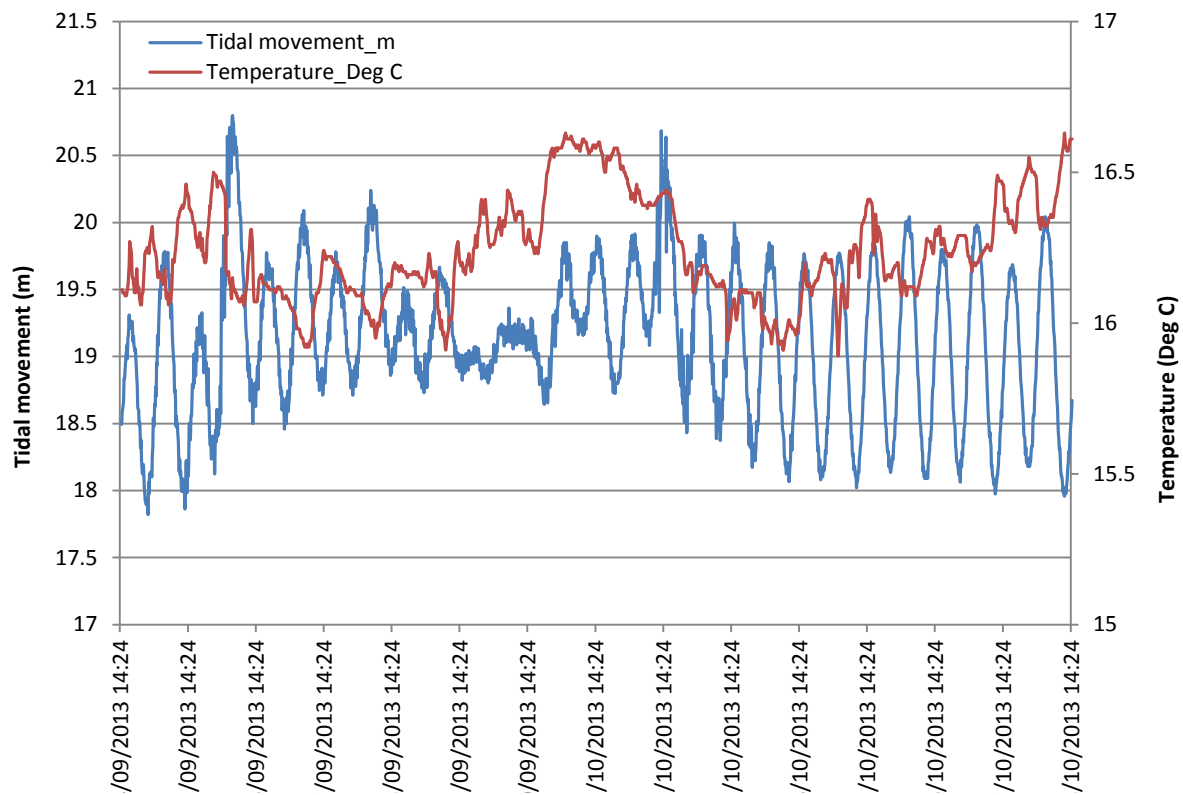
The daily average pH was 8.1. Maximum daily variation was 0.1 (30<sup>th</sup> September). Average daily variation was < 0.1.



**Figure 3.** Changes in pH with tidal movement (m) over fifteen days, from 24<sup>th</sup> September to 8<sup>th</sup> October 2013.

### 3.5 Water temperature

The daily average temperature value ranged between 16.1°C and 16.5°C. Maximum daily variation was 0.5°C (5<sup>th</sup> October). Average daily variation was 0.3°C.



**Figure 4.** Changes in temperature (°C) with tidal movement (m) over fifteen days, from 24<sup>th</sup> September to 8<sup>th</sup> October 2013.